



100 Series Operable Wall



Index of 100 Series Operable Wall

[illegible]

glas-STAX

operable walls

folding doors

4 WHEELED TROLLEY
NYLON TYRED
BALL BEARING CARRIER

EXTRUDED ALUMINIUM
No.100-1 TRACK

2 x FOUR FINGER
PVC SWEEP SEALS
PROVIDE 6 WAY
ACOUSTIC SEAL

TOP RAIL

TAPd FLAT BAR

100

50

10

30

100

1	TRACK REFERENCE AMENDED	14/10/09
REV	REVISION REMARKS	DATE

TITLE:

100 STANDARD WITH TOP SWEEP SEAL
No.100-1 TRACK & 4 WHEELED TROLLEY

PRODUCT:

OPERABLE WALL

DRAWING NUMBER:

100-07-0001

SEQUENCE NUMBER:

1

LOTUS
www.lotusdoors.com.au

© COPYRIGHT LOTUS FOLDING WALLS & DOORS PTY LTD. REPRODUCTION PROHIBITED WITHOUT PERMISSION

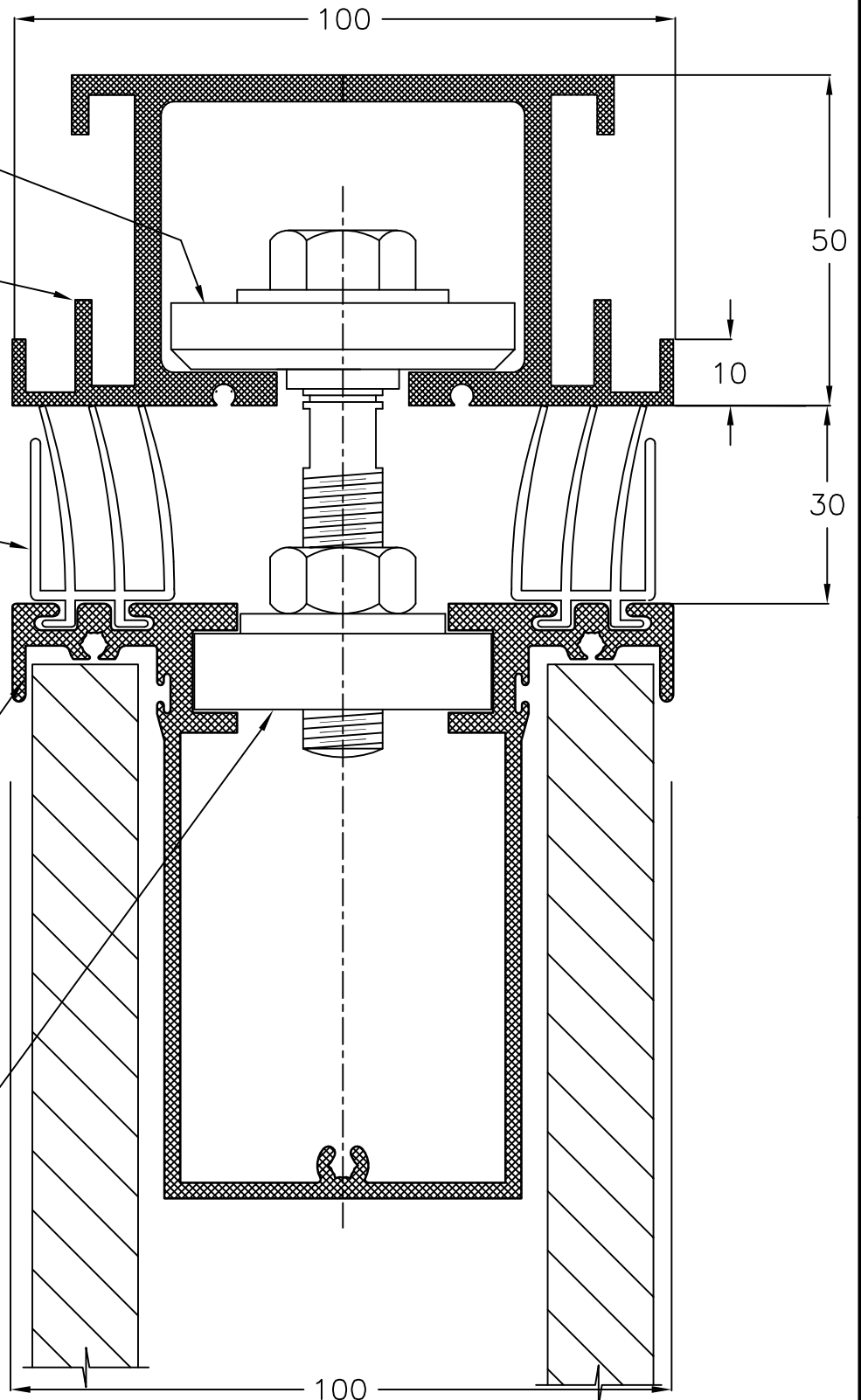
DISC &
NULON PTFE
ENGINEERING
LUBRICANT

EXTRUDED ALUMINIUM
No100-1 TRACK

2 x FOUR FINGER
PVC SWEEP SEALS
PROVIDE 6 WAY
ACOUSTIC SEAL

TOP RAIL

TAPd FLAT BAR



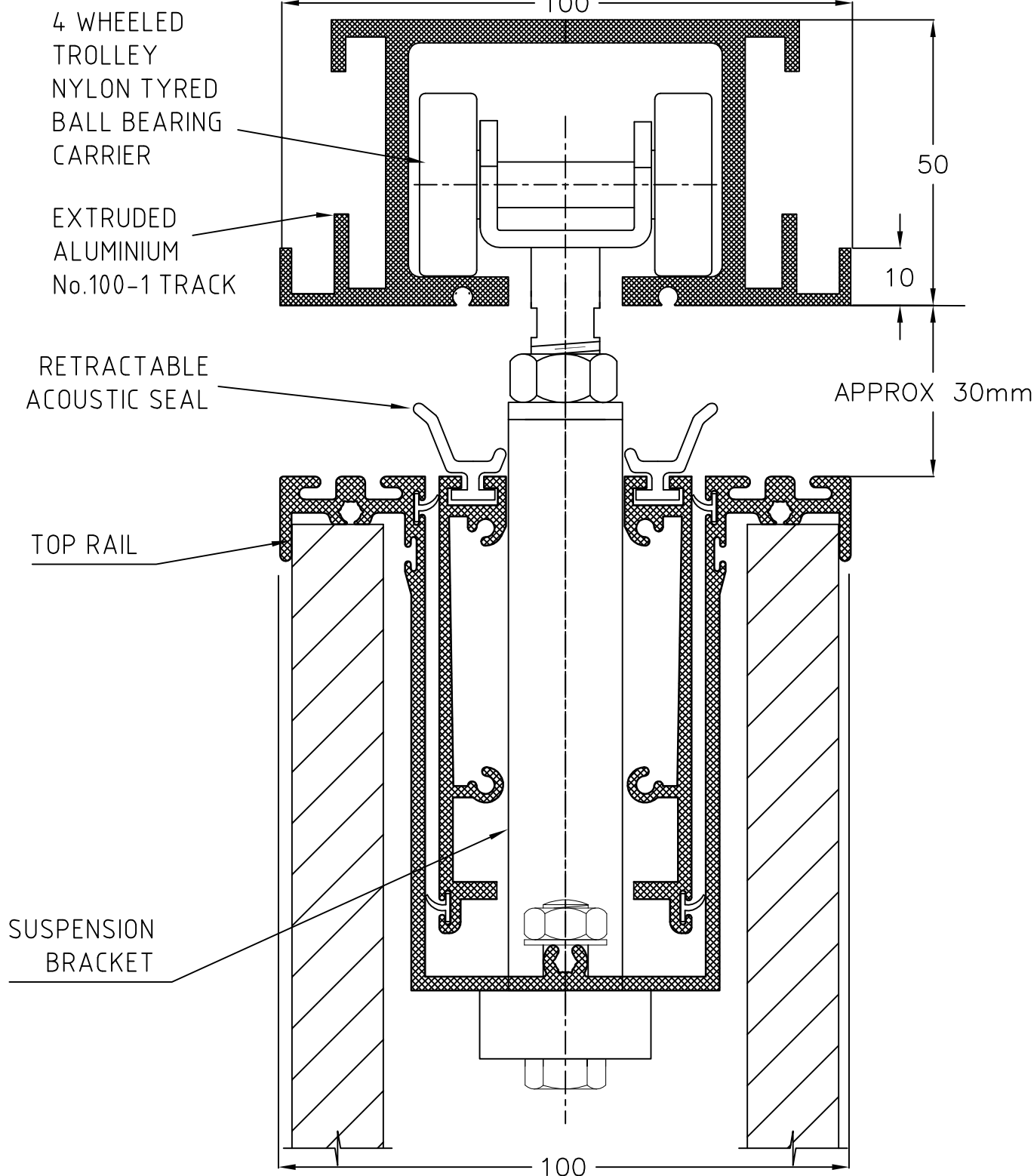
1	TRACK REFERENCE AMENDED	14/10/09
REV	REVISION REMARKS	DATE

TITLE: 100 STANDARD WITH TOP SWEEP SEAL
No.100-1 TRACK & MULTIDIRECTIONAL DISC

PRODUCT: OPERABLE WALL

DRAWING NUMBER: 100-07-0002
SEQUENCE NUMBER: 2

LOTUS
www.lotusdoors.com.au



1	TRACK REFERENCE AMENDED	14/10/09
REV	REVISION REMARKS	DATE

TITLE:

100 STANDARD WITH TOP RETRACTABLE SEAL
No.100-1 TRACK & 4 WHEELED TROLLEY

PRODUCT:

OPERABLE WALL

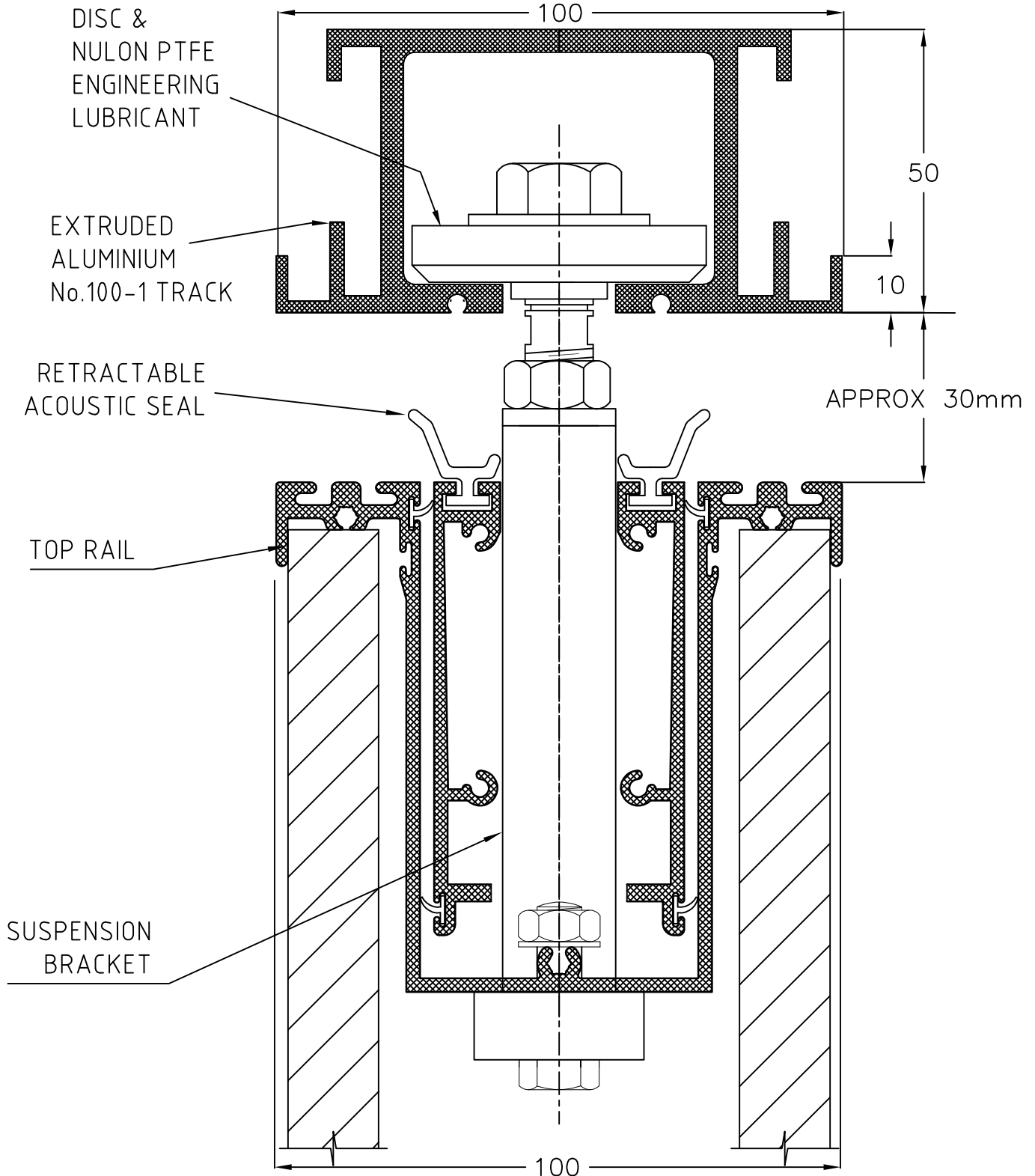
DRAWING NUMBER:

100-07-0003

SEQUENCE NUMBER:

3

LOTUS
www.lotusdoors.com.au



1	TRACK REFERENCE AMENDED	14/10/09
REV	REVISION REMARKS	DATE

TITLE:

100 STANDARD WITH TOP RETRACTABLE SEAL
No.100-1 TRACK & MULTIDIRECTIONAL DISC

PRODUCT:

OPERABLE WALL

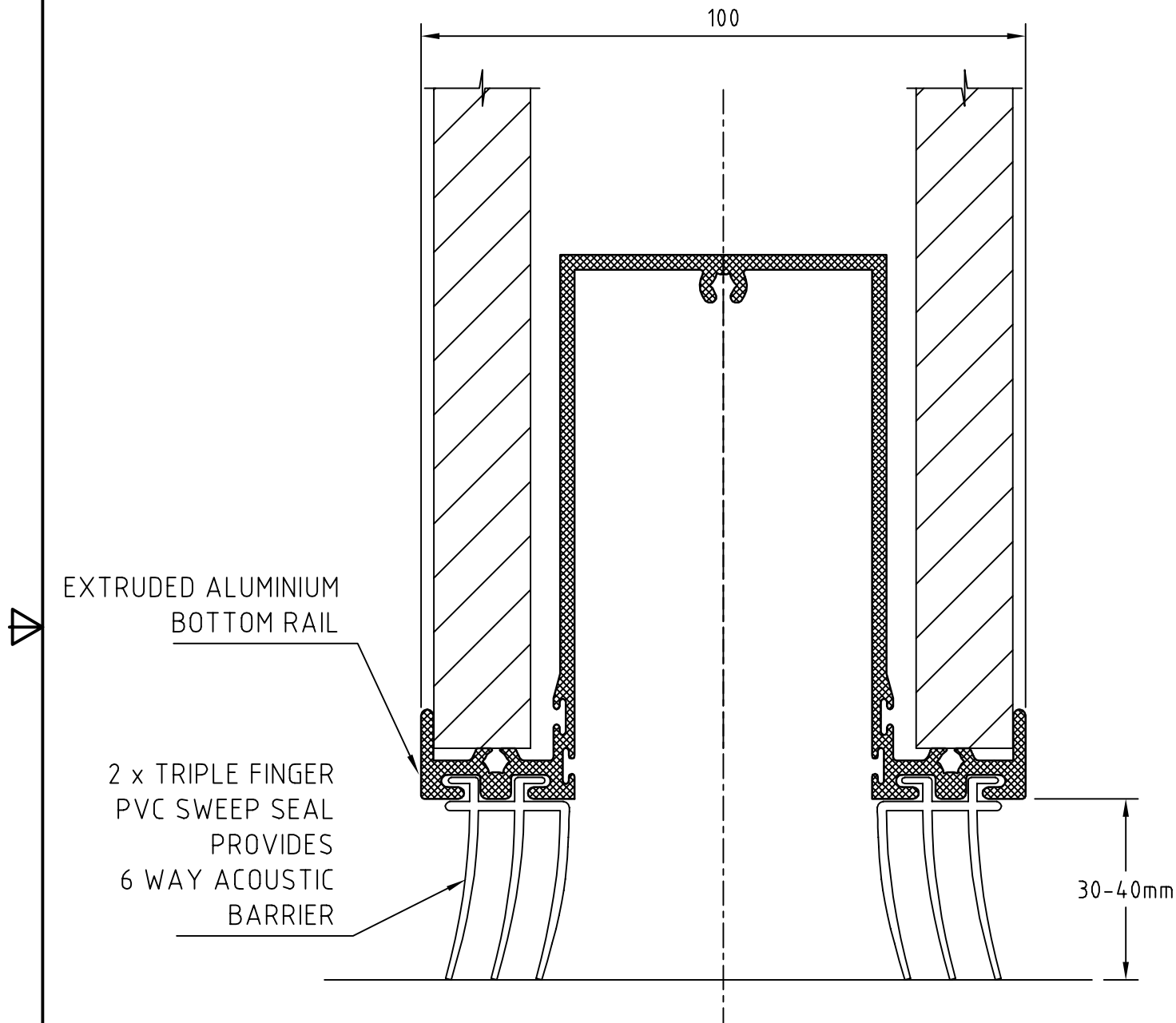
DRAWING NUMBER:


100-07-0004

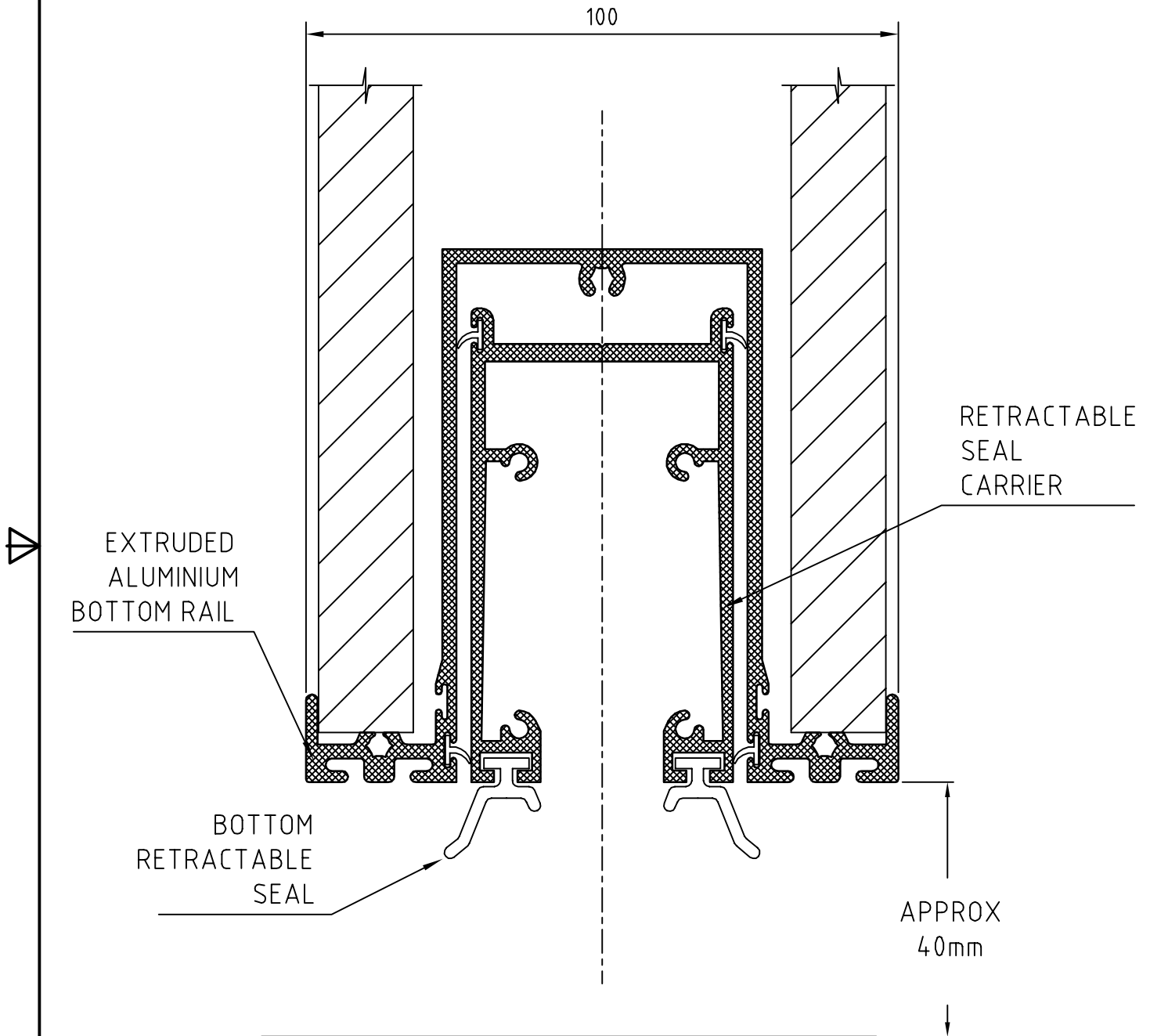
SEQUENCE NUMBER:

4

LOTUS
www.lotusdoors.com.au



			TITLE:		100 STANDARD BOTTOM SWEEP SEALS
			PRODUCT:		OPERABLE WALL
			DRAWING NUMBER:		100-07-0005
			SEQUENCE NUMBER:		5
REV	REVISION REMARKS	DATE			
 www.lotusdoors.com.au			© COPYRIGHT LOTUS FOLDING WALLS & DOORS PTY LTD. REPRODUCTION PROHIBITED WITHOUT PERMISSION		



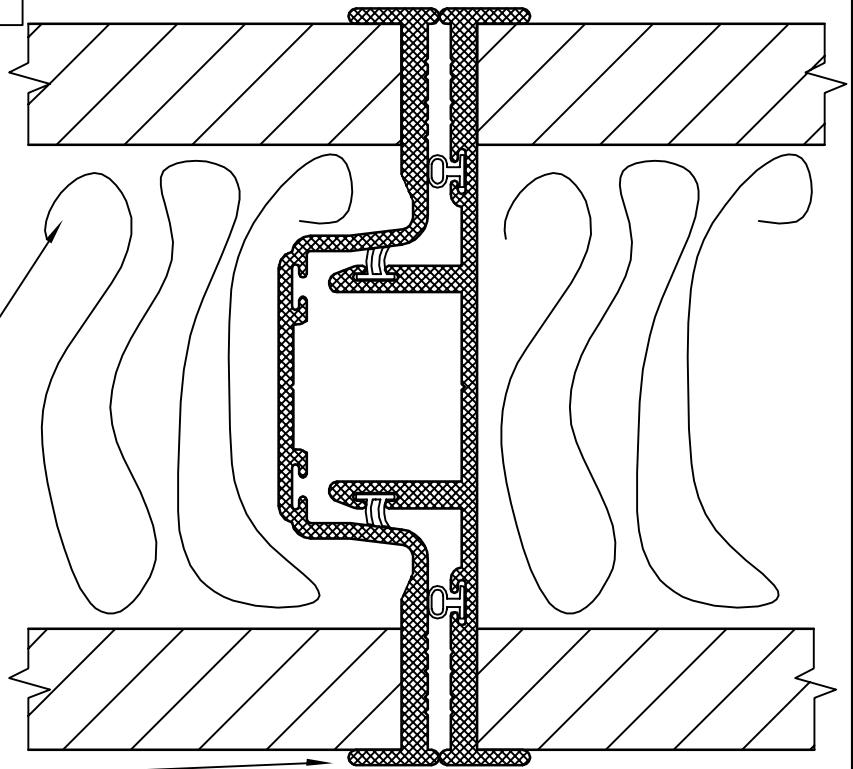
			TITLE:		100 STANDARD BOTTOM RETRACTABLE SEALS
			PRODUCT:		OPERABLE WALL
			DRAWING NUMBER:		100-07-0006
			SEQUENCE NUMBER:		6
REV	REVISION REMARKS	DATE			

LOTUS
www.lotusdoors.com.au

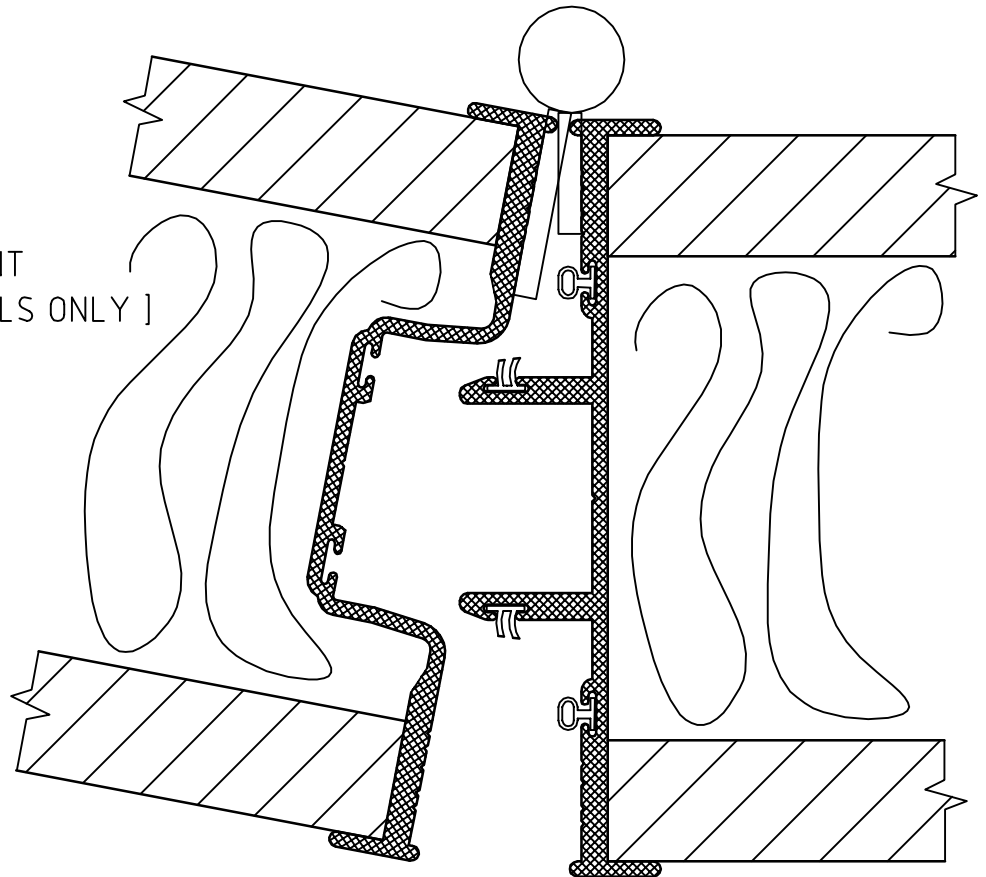
PLAN VIEW OF
TYPICAL PANEL JOINT

ACOUSTIC
INSULATION
AS REQUIRED

STRONG INTERLOCKING
PROFILE PROVIDE
RIGIDITY & LATERAL
STABILITY TO WALL



PLAN VIEW OF
HINGED PANEL JOINT
[CENTRE STACKED PANELS ONLY]



REV	REVISION REMARKS	DATE

LOTUS
www.lotusdoors.com.au

TITLE:

**100 STANDARD
STILES AT PANEL JOINTS**

PRODUCT:

OPERABLE WALL

DRAWING NUMBER:

100-07-0007

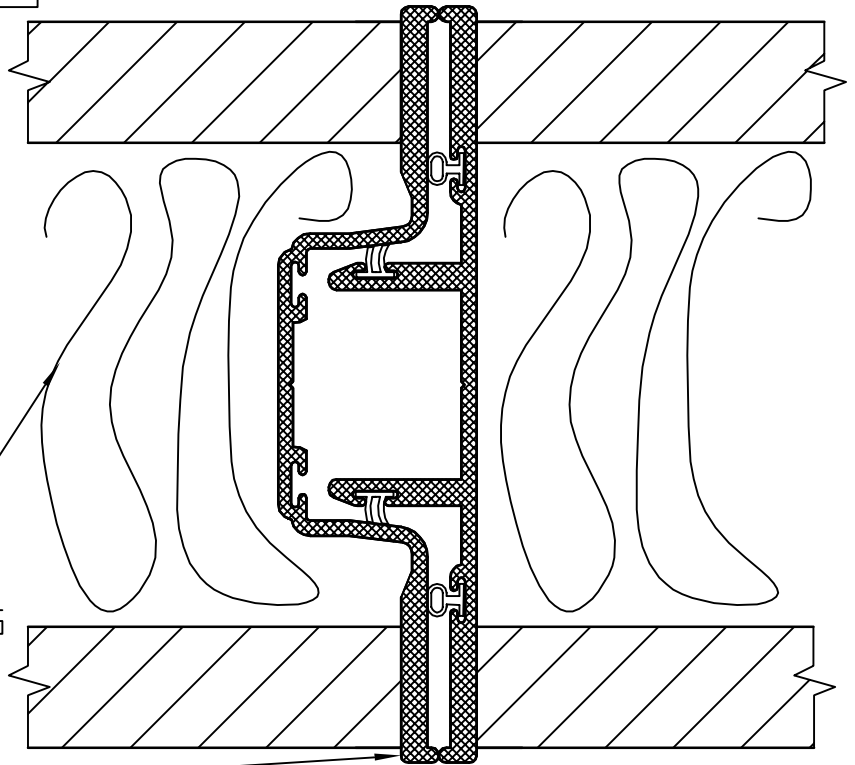
SEQUENCE NUMBER:

7

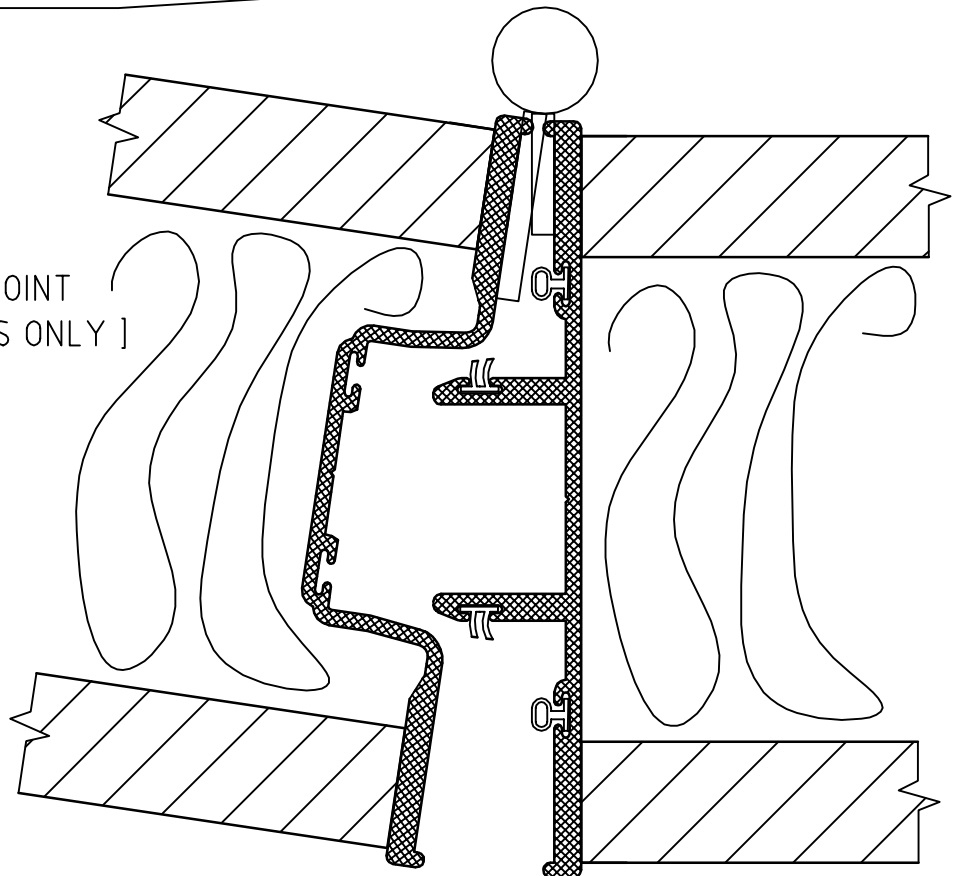
PLAN VIEW OF
FINELINE PANEL JOINT

ACOUSTIC
INSULATION
AS REQUIRED

STRONG INTERLOCKING
PROFILE PROVIDE
RIGIDITY & LATERAL
STABILITY TO WALL



PLAN VIEW OF
HINGED FINELINE PANEL JOINT
[CENTRE STACKED PANELS ONLY]



REV	REVISION REMARKS	DATE

LOTUS
www.lotusdoors.com.au

TITLE:

**100 FINELINE
STILES AT PANEL JOINTS**

PRODUCT:

OPERABLE WALL

DRAWING NUMBER:

100-07-0008

SEQUENCE NUMBER:

8

PLAN VIEW OF
TYPICAL
OVERLAY PANEL JOINT

ACOUSTIC
INSULATION
AS REQUIRED

112

PLAN VIEW OF
TYPICAL HINGED
OVERLAY PANEL JOINT

ACOUSTIC
INSULATION
AS REQUIRED

TITLE:

**100 OVERLAY
STILES AT PANEL JOINTS**

PRODUCT:

OPERABLE WALL

DRAWING NUMBER:

100-07-0009

SEQUENCE NUMBER:

9

REV

REVISION REMARKS

DATE

LOTUS

www.lotusdoors.com.au

glas-STAX

operable walls

folding doors

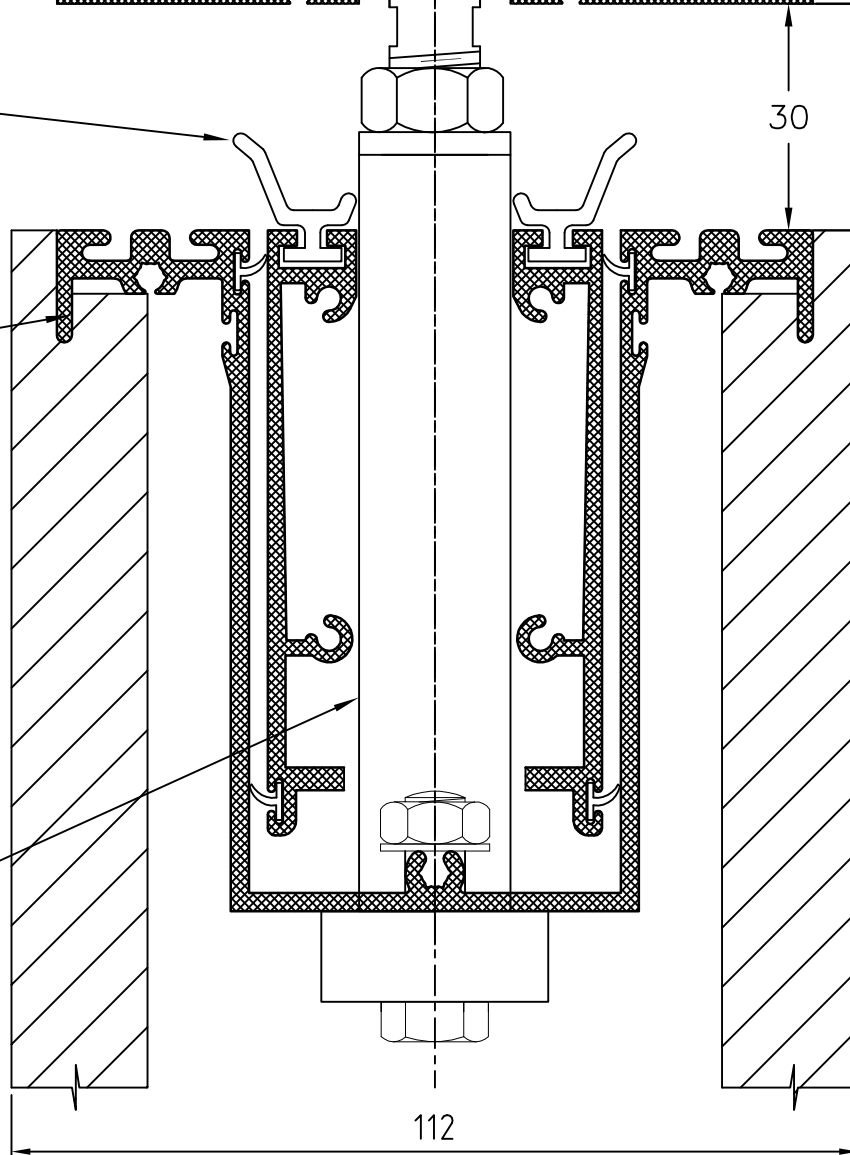
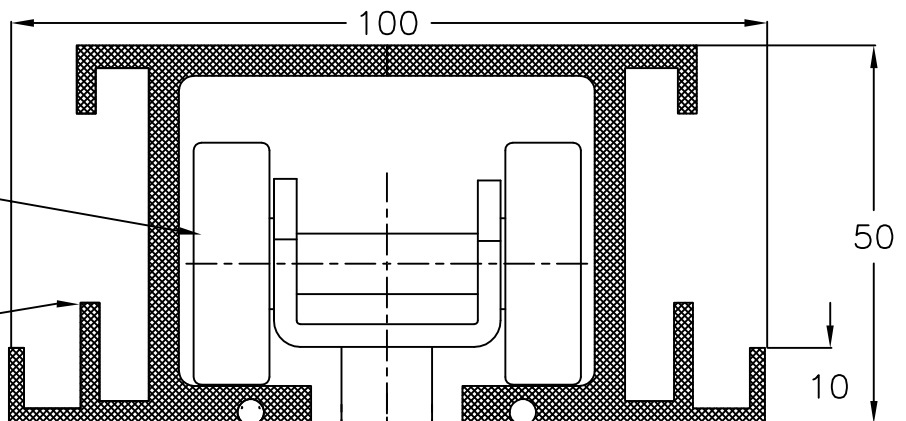
4 WHEELED
TROLLEY
NYLON TYRED
BALL BEARING
CARRIER

EXTRUDED
ALUMINIUM
No.100-1 TRACK

RETRACTABLE
ACOUSTIC SEAL

TOP RAIL

SUSPENSION
BRACKET



1	TRACK REFERENCE AMENDED	14/10/09
REV	REVISION REMARKS	DATE

TITLE:

100 OVERLAY WITH TOP RETRACTABLE SEAL
No.100-1 TRACK & 4 WHEELED TROLLEY

PRODUCT:

OPERABLE WALL

DRAWING NUMBER:

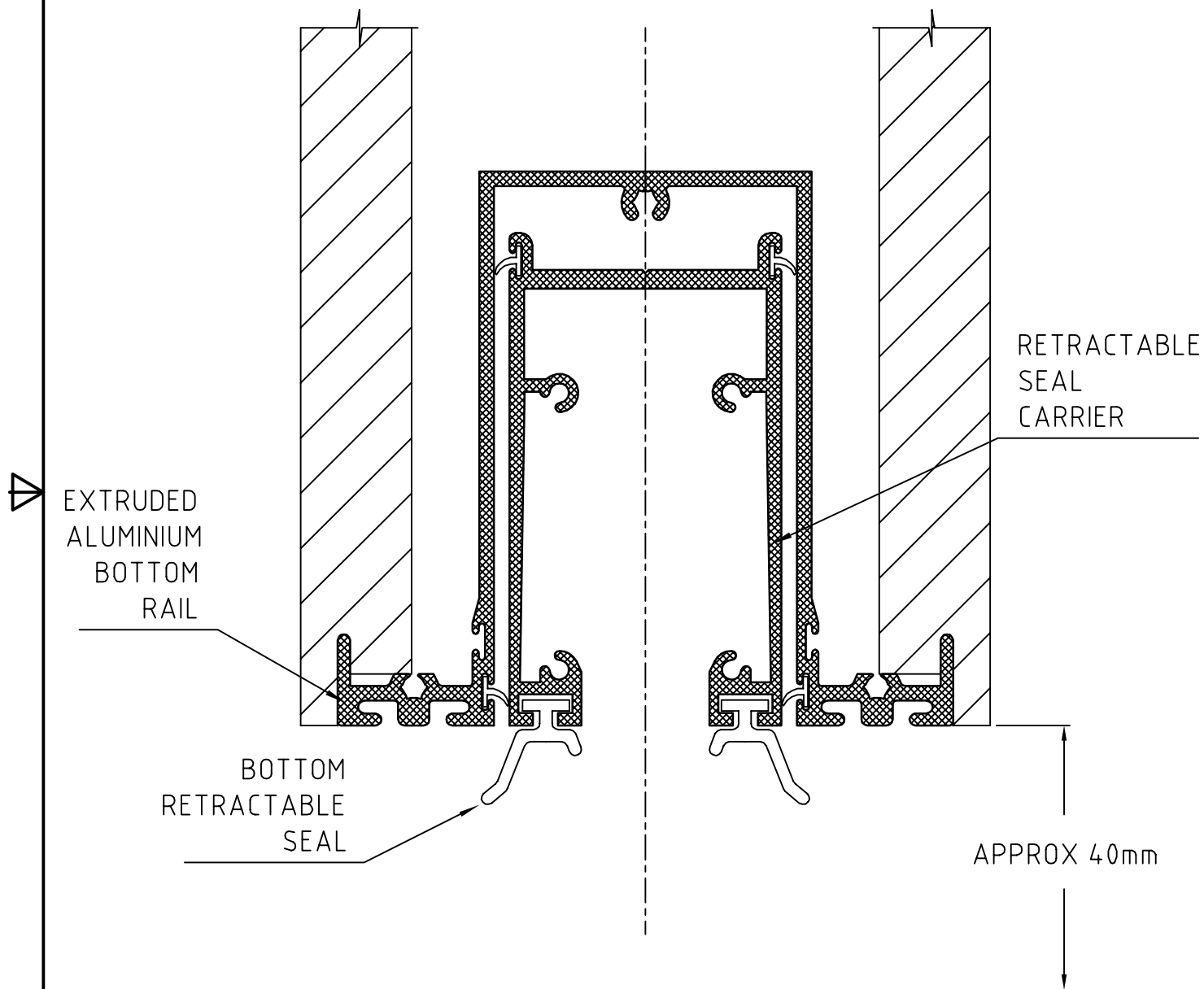
100-07-0010

SEQUENCE NUMBER:

10

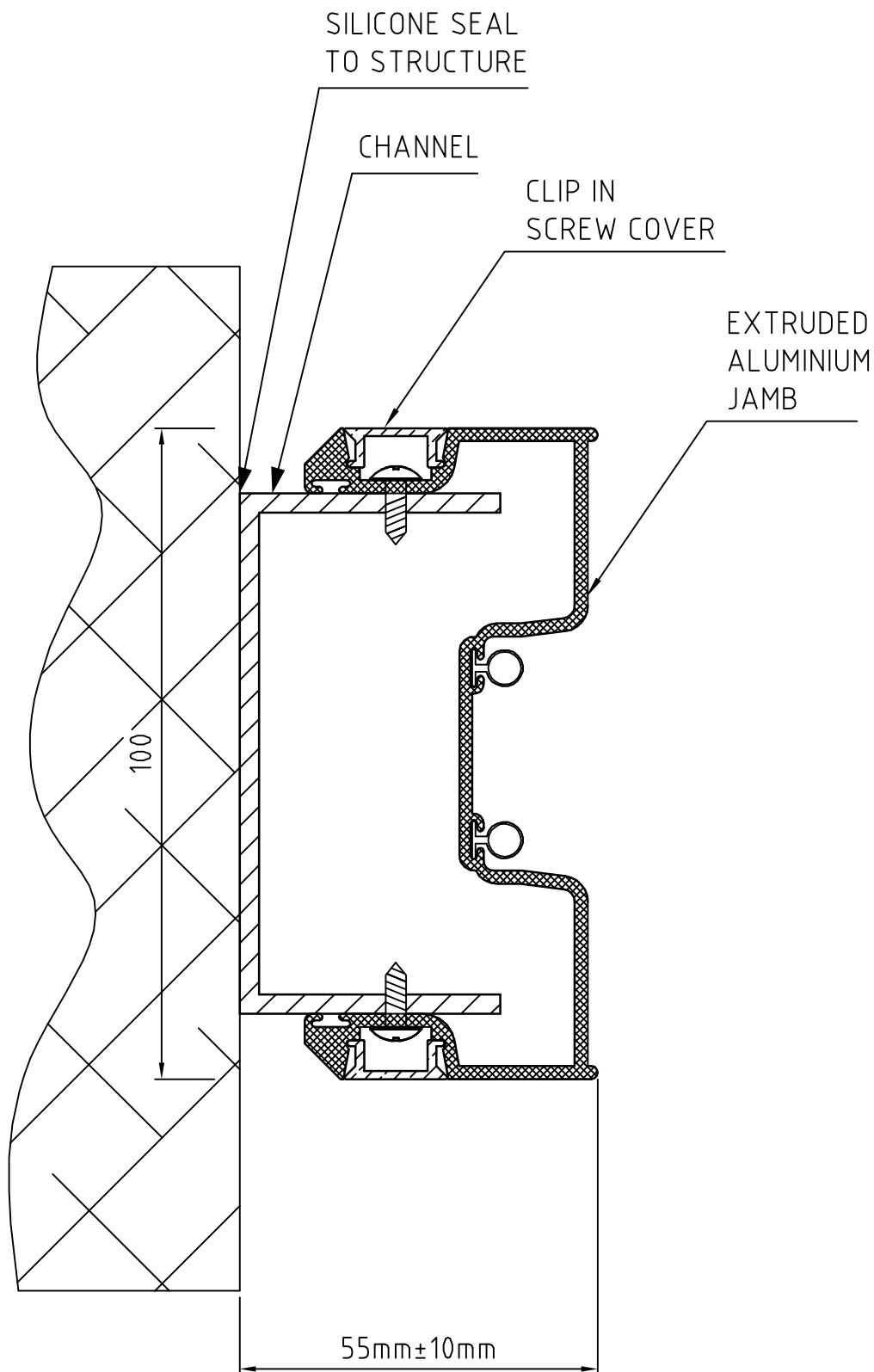
LOTUS
www.lotusdoors.com.au

© COPYRIGHT LOTUS FOLDING WALLS & DOORS PTY LTD. REPRODUCTION PROHIBITED WITHOUT PERMISSION



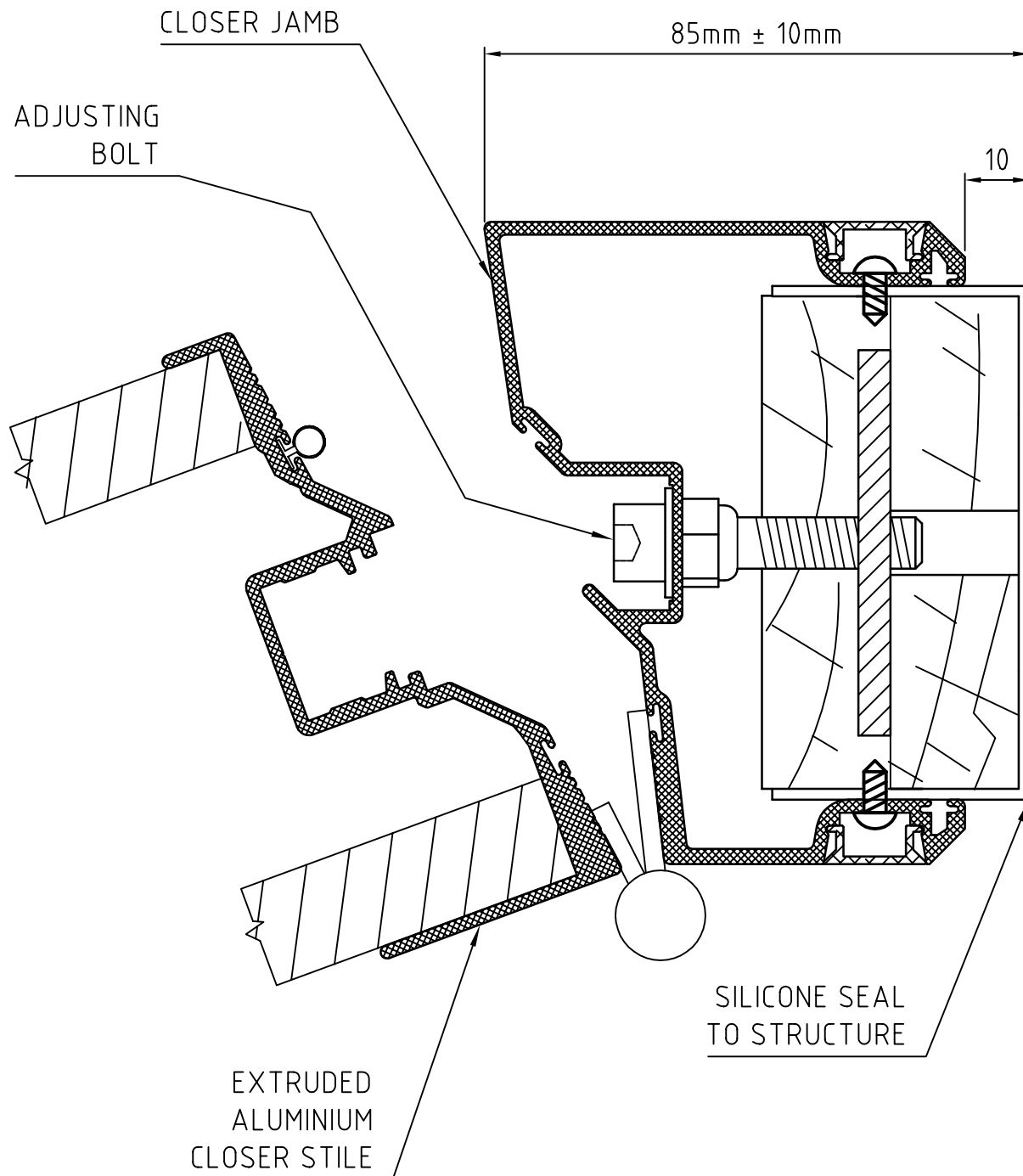
			TITLE: 100 OVERLAY BOTTOM RETRACTABLE SEALS	
REV	REVISION REMARKS	DATE		
<div>LOTUS</div> <div>www.lotusdoors.com.au</div>			PRODUCT: OPERABLE WALL	
			DRAWING NUMBER: 100-07-0011	SEQUENCE NUMBER: 11
			© COPYRIGHT LOTUS FOLDING WALLS & DOORS PTY LTD. REPRODUCTION PROHIBITED WITHOUT PERMISSION	





			TITLE: 100 STANDARD ADJUSTABLE PASSIVE JAMB	
REV	REVISION REMARKS	DATE		
<div>LOTUS</div> <div>www.lotusdoors.com.au</div>			PRODUCT: OPERABLE WALL	
			DRAWING NUMBER: 100-07-0012	SEQUENCE NUMBER: 12
			© COPYRIGHT LOTUS FOLDING WALLS & DOORS PTY LTD. REPRODUCTION PROHIBITED WITHOUT PERMISSION	





1	CLOSER UPDATED	21/02/11
REV	REVISION REMARKS	DATE

TITLE: **100 STANDARD CLOSER JAMB
FOR JAMB HUNG PASS DOOR**

PRODUCT: **OPERABLE WALL**

DRAWING NUMBER: **100-07-0013**

SEQUENCE NUMBER: **13**

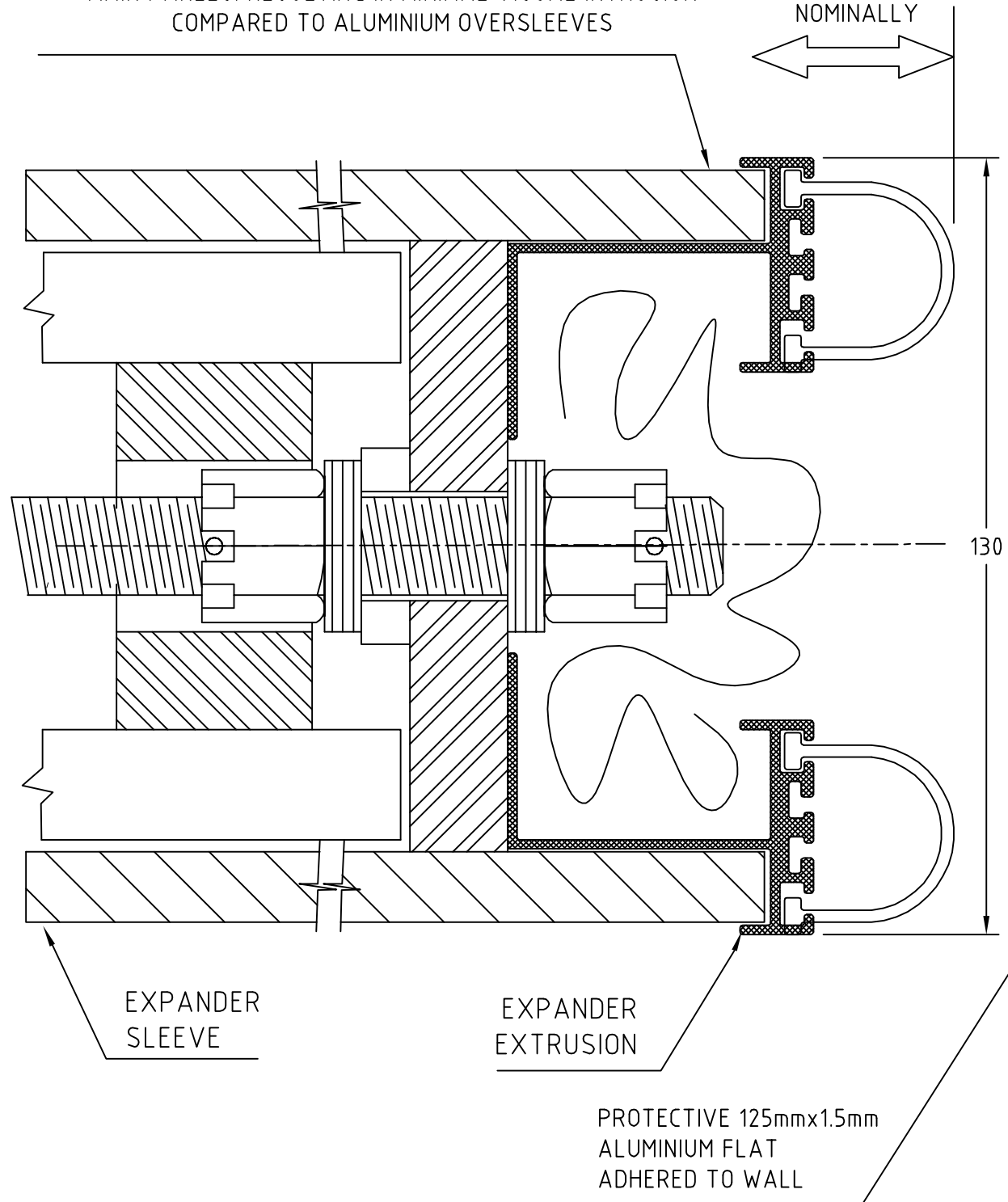
LOTUS
www.lotusdoors.com.au




LOTUS

12mm OVERSLEEVE WRAPPED IN SAME COVERING AS
MAIN PANELS. RESULTING IN MINIMAL VISUAL INTRUSION
COMPARED TO ALUMINIUM OVERSLEEVES

140 TRAVEL
NOMINALLY



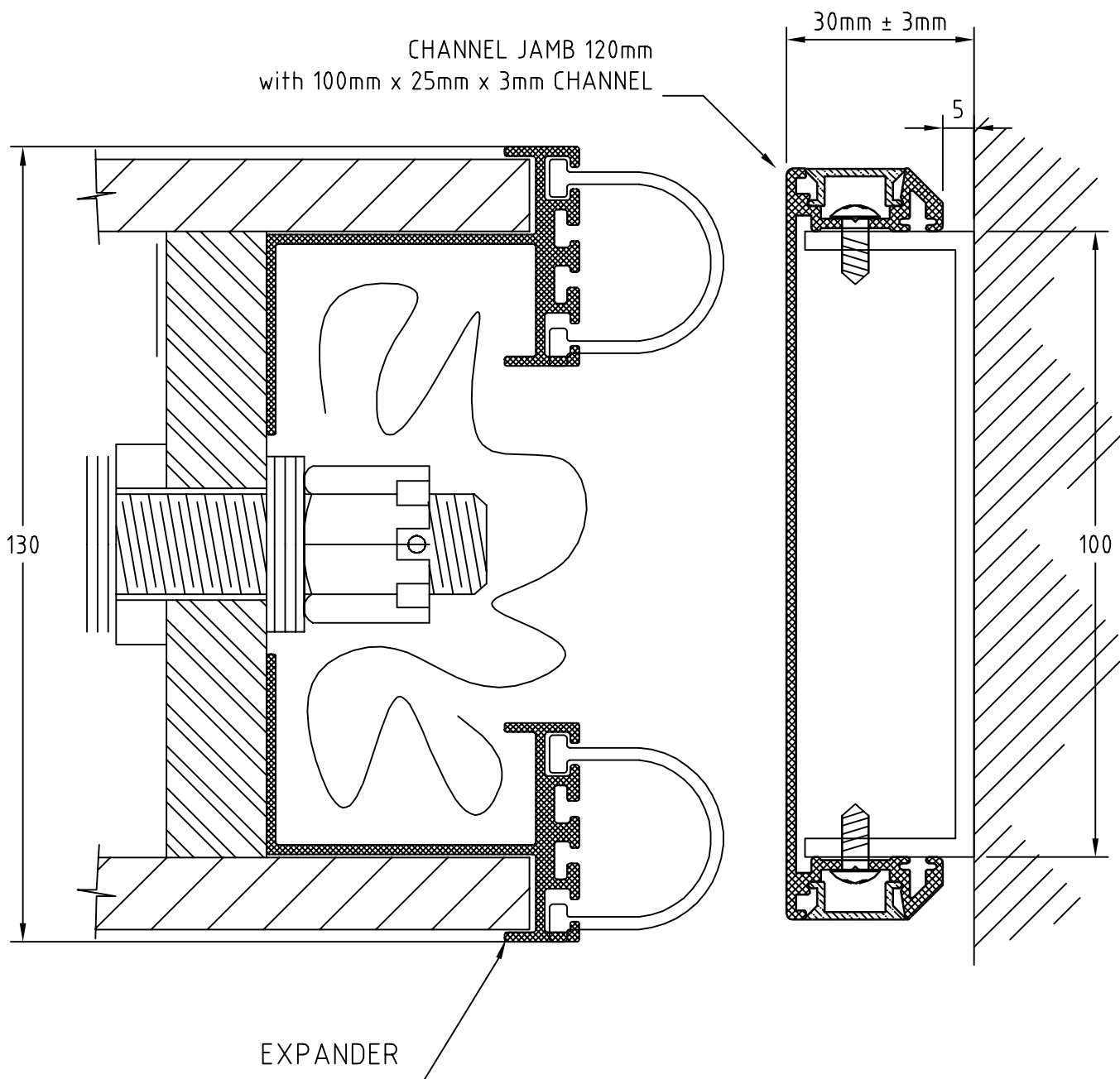
			TITLE:		100 STANDARD EXPANDING PANEL DETAIL
REV	REVISION REMARKS	DATE	PRODUCT:		
			OPERABLE WALL		
			DRAWING NUMBER:	SEQUENCE NUMBER:	
			100-07-0015	15	
<div>  www.lotusdoors.com.au </div>					
© COPYRIGHT LOTUS FOLDING WALLS & DOORS PTY LTD. REPRODUCTION PROHIBITED WITHOUT PERMISSION					



© COPYRIGHT LOTUS FOLDING WALLS & DOORS PTY LTD. REPRODUCTION PROHIBITED WITHOUT PERMISSION



CHANNEL JAMB 120mm
with 100mm x 25mm x 3mm CHANNEL



			TITLE: 100 EXPANDER AND 120mm CHANNEL JAMB	
REV	REVISION REMARKS	DATE		
<div>LOTUS</div> <div>www.lotusdoors.com.au</div>			PRODUCT: OPERABLE WALL	
			DRAWING NUMBER: 100-07-0017	SEQUENCE NUMBER: 17
			© COPYRIGHT LOTUS FOLDING WALLS & DOORS PTY LTD. REPRODUCTION PROHIBITED WITHOUT PERMISSION	