

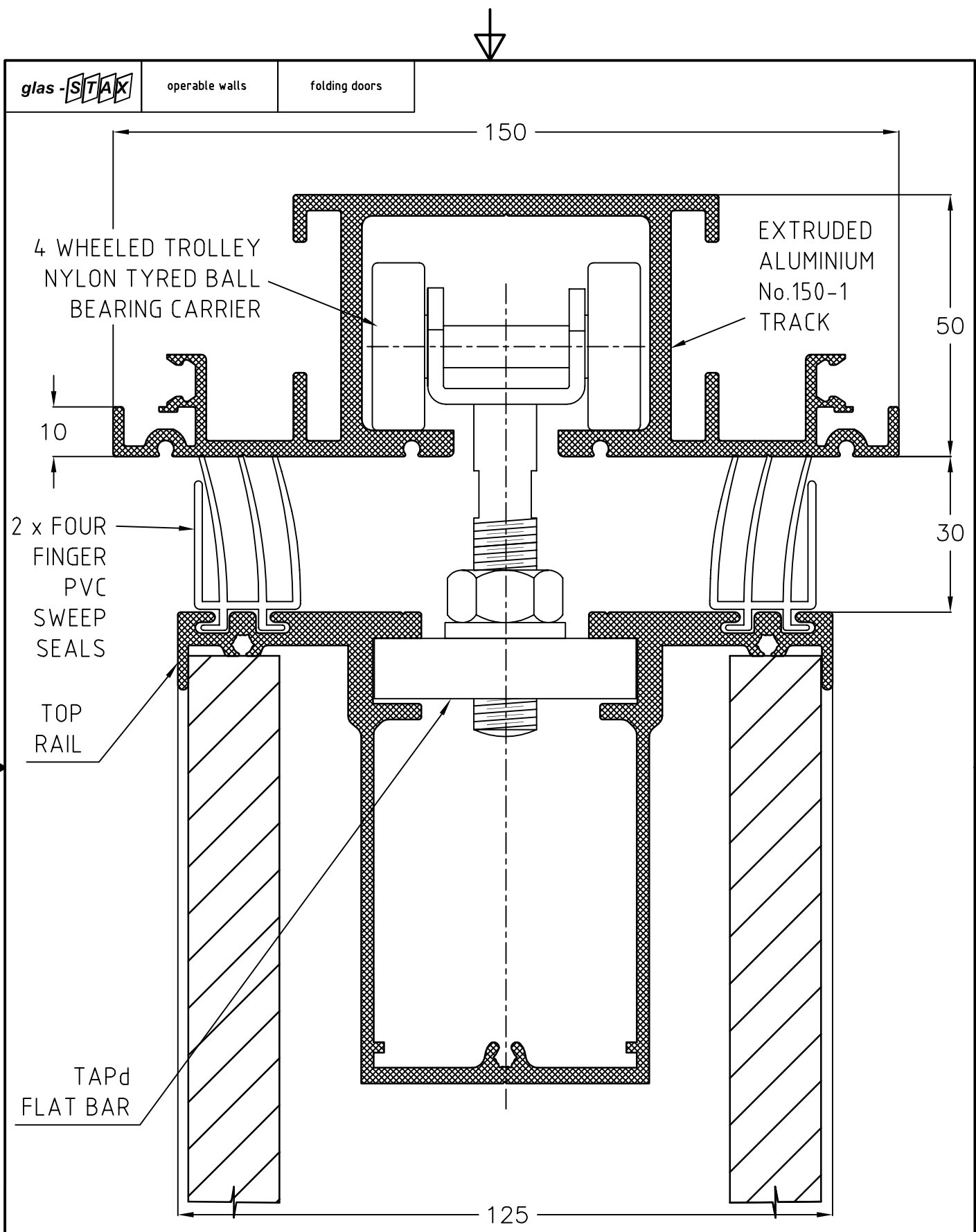


## 125 Series Operable Wall



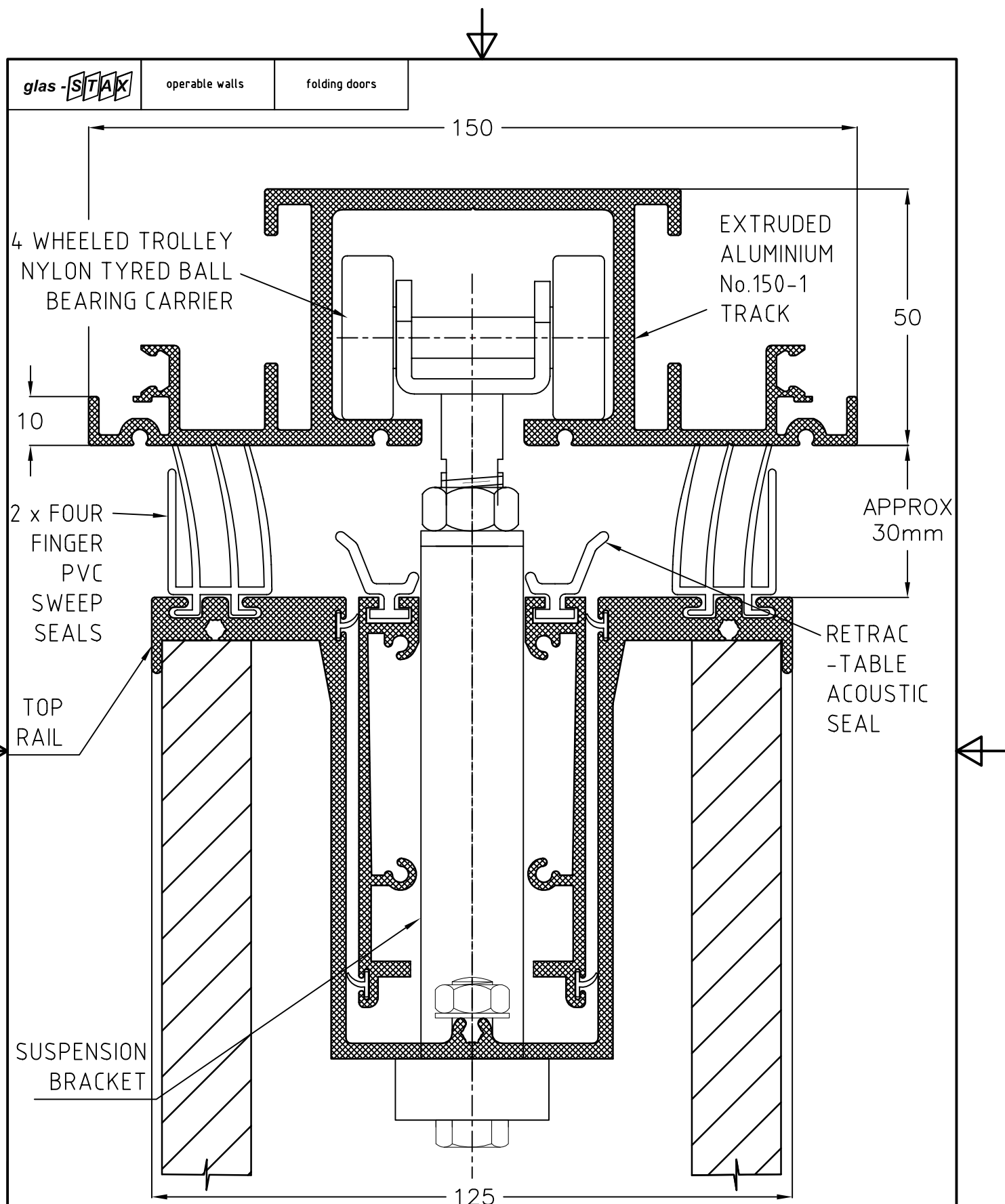
## Index of 125 Series Operable Wall

[illegible]



|   |                  |      |   |                           |
|---|------------------|------|---|---------------------------|
|   |                  |      | TITLE:<br><br>125 STANDARD WITH TOP SWEEP SEAL<br><br>No150-1 TRACK & 4 WHEELED TROLLEY |                           |
|   |                  |      |   |                           |
| REV   | REVISION REMARKS | DATE |   |                           |
| <div>LOTUS</div> <div>www.lotusdoors.com.au</div> |                  |      | PRODUCT:<br><br>OPERABLE WALL   |                           |
|   |                  |      | DRAWING NUMBER:<br><br>125-09-0001  | SEQUENCE NUMBER:<br><br>1 |

**LOTUS**  
www.lotusdoors.com.au



TITLE: 125 STANDARD WITH TOP RETRACTABLE SEAL  
No150-1 TRACK & 4 WHEELED TROLLEY

PRODUCT: OPERABLE WALL

DRAWING NUMBER: 125-09-0002

SEQUENCE NUMBER: 2

**LOTUS**  
www.lotusdoors.com.au

glas-STAX

operable walls

folding doors

125

EXTRUDED  
ALUMINIUM  
BOTTOM RAIL

30–40mm

2 x TRIPLE  
FINGER PVC  
SWEEP SEALS

TITLE:

125 STANDARD  
BOTTOM SWEEP SEALS

PRODUCT:

OPERABLE WALL

DRAWING NUMBER:

125-09-0003

SEQUENCE NUMBER:

3

REV

REVISION REMARKS

DATE

**LOTUS**  
www.lotusdoors.com.au

© COPYRIGHT LOTUS FOLDING WALLS & DOORS PTY LTD. REPRODUCTION PROHIBITED WITHOUT PERMISSION

glas-STAX

operable walls

folding doors

125

RETRACTABLE  
SEAL  
CARRIER

30–40mm

2 x TRIPLE  
FINGER PVC  
SWEEP SEALS

RETRACTABLE  
ACOUSTIC SEAL

EXTRUDED  
ALUMINIUM  
BOTTOM RAIL

TITLE:

125 STANDARD BOTTOM  
SWEEP & RETRACTABLE SEALS

PRODUCT:

OPERABLE WALL

DRAWING NUMBER:

125-09-0004

SEQUENCE NUMBER:

4

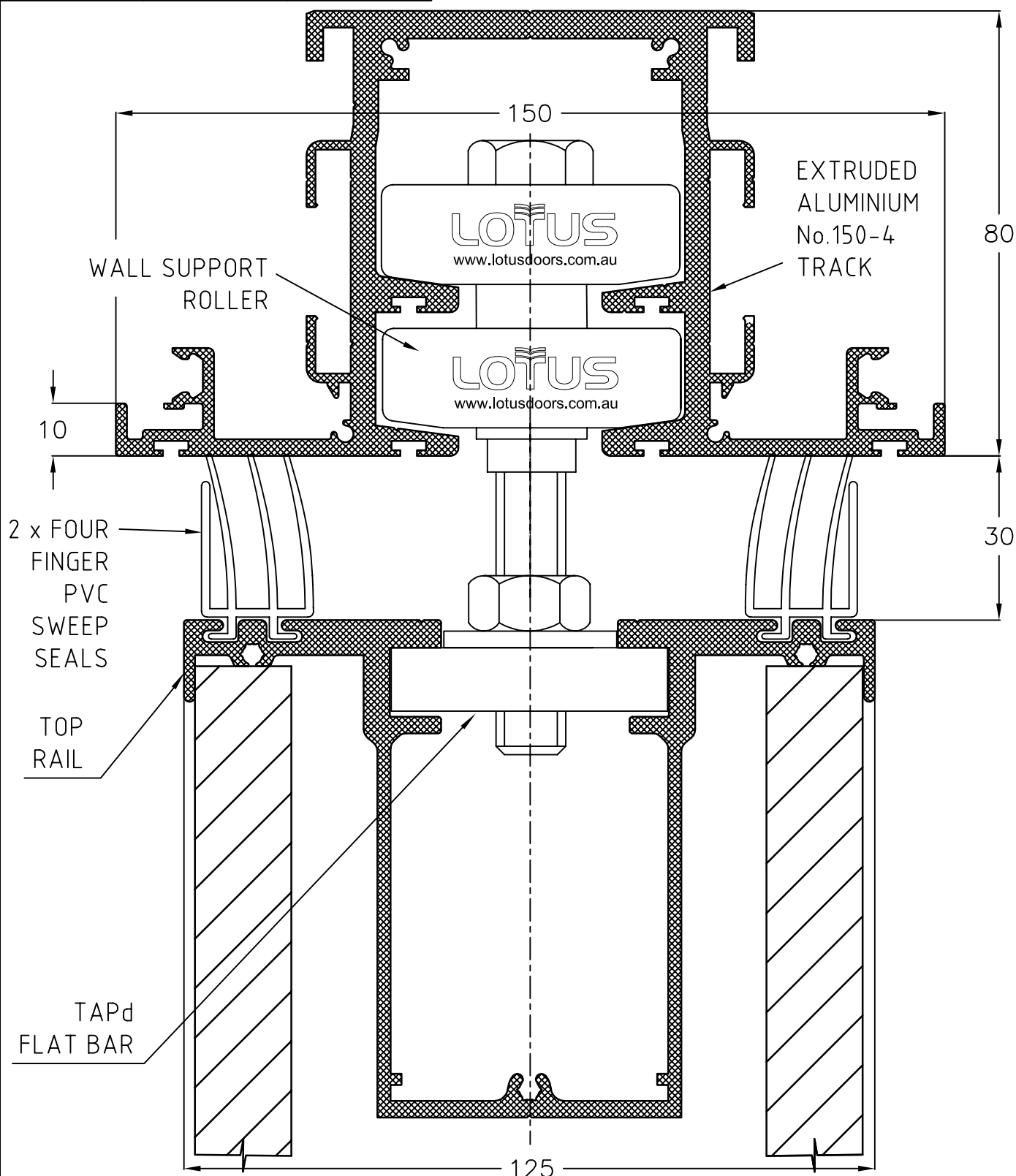
**LOTUS**  
www.lotusdoors.com.au

© COPYRIGHT LOTUS FOLDING WALLS & DOORS PTY LTD. REPRODUCTION PROHIBITED WITHOUT PERMISSION

glas-STAX

operable walls

folding doors



TITLE:

125 STANDARD WITH TOP SWEEP SEAL  
No150-4 TRACK & WALL SUPPORT ROLLER

REV

REVISION REMARKS

DATE

PRODUCT:

OPERABLE WALL

DRAWING NUMBER:

125-09-0005

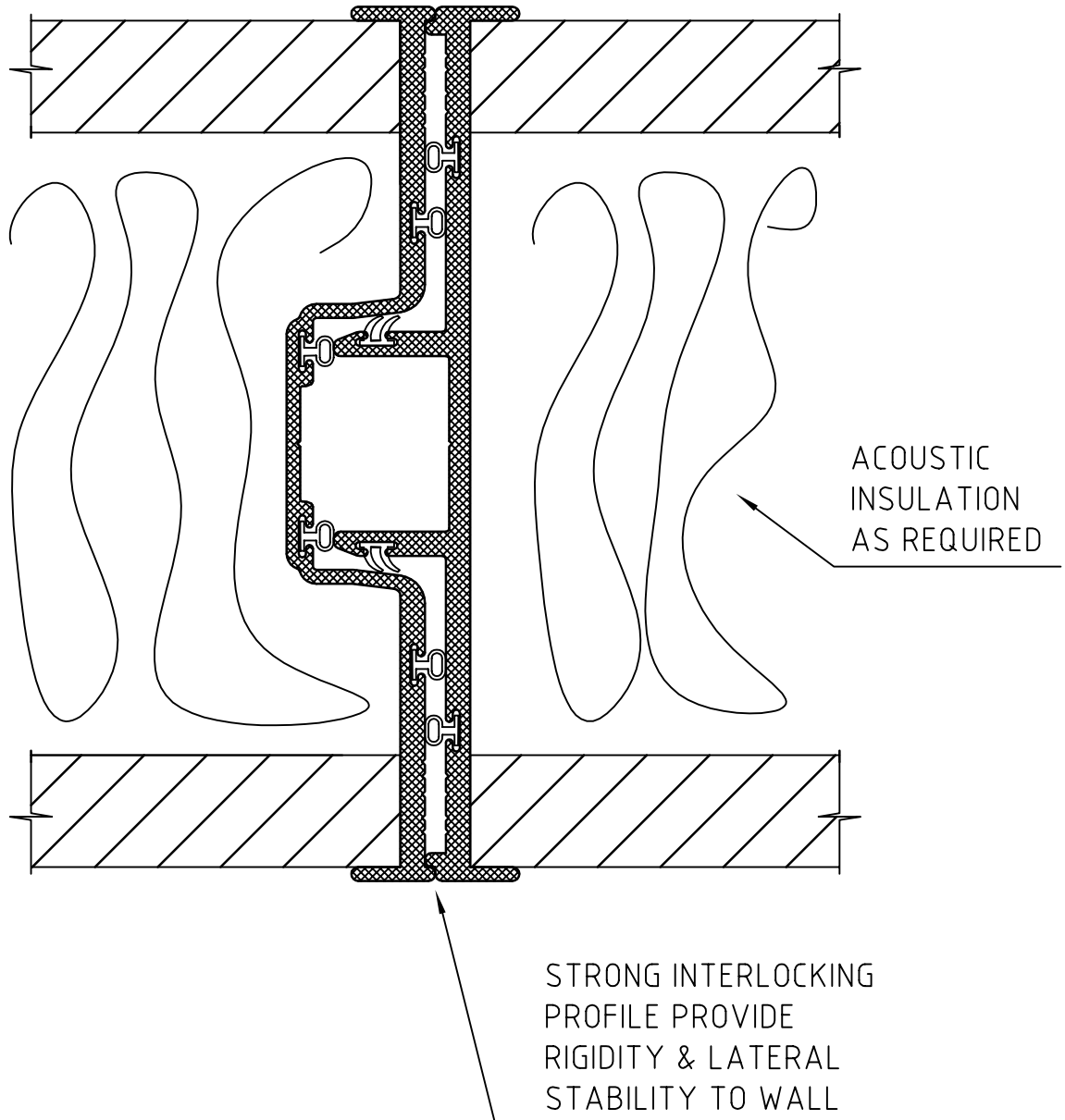
SEQUENCE NUMBER:

5

**LOTUS**  
www.lotusdoors.com.au

© COPYRIGHT LOTUS FOLDING WALLS & DOORS PTY LTD. REPRODUCTION PROHIBITED WITHOUT PERMISSION

PLAN VIEW OF  
TYPICAL PANEL JOINT



TITLE:

125 STANDARD  
STILES AT PANEL JOINTS

PRODUCT:

OPERABLE WALL

DRAWING NUMBER:

125-09-0006

SEQUENCE NUMBER:

6

REV

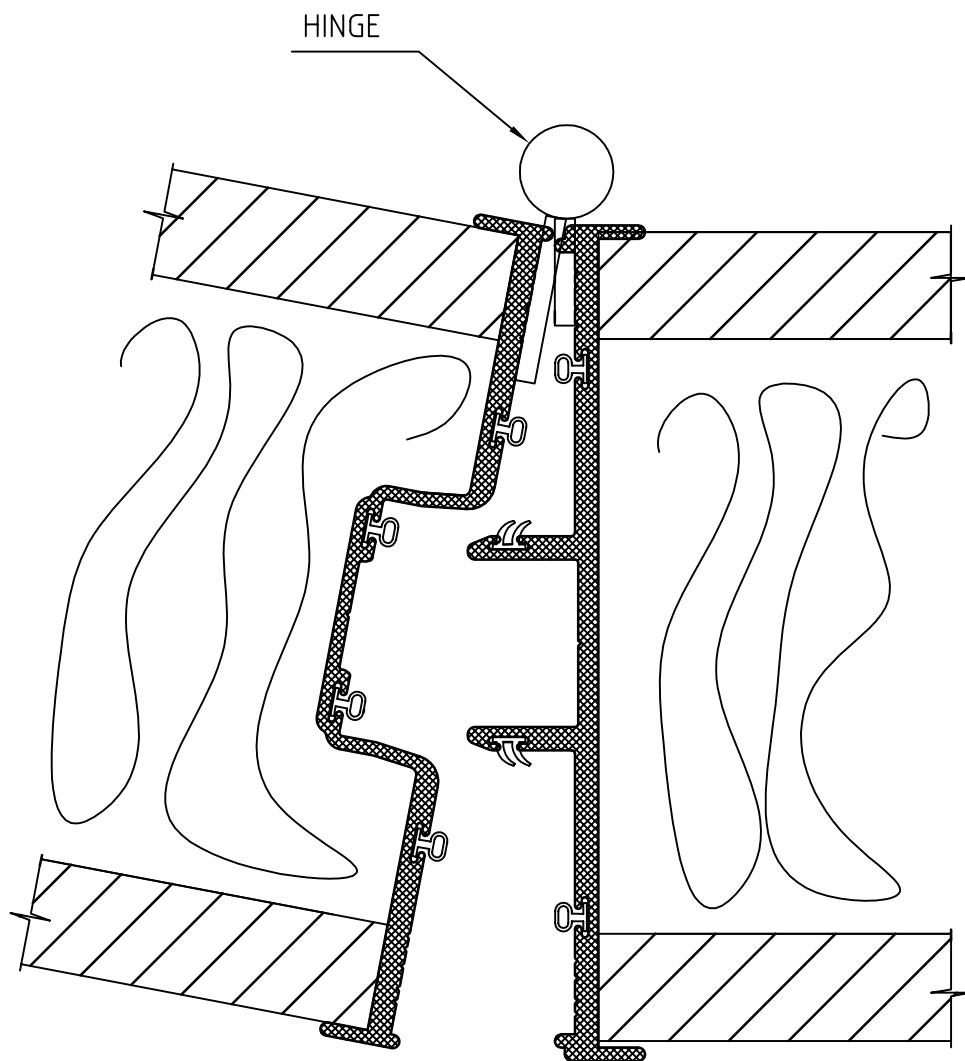
REVISION REMARKS

DATE


**LOTUS**

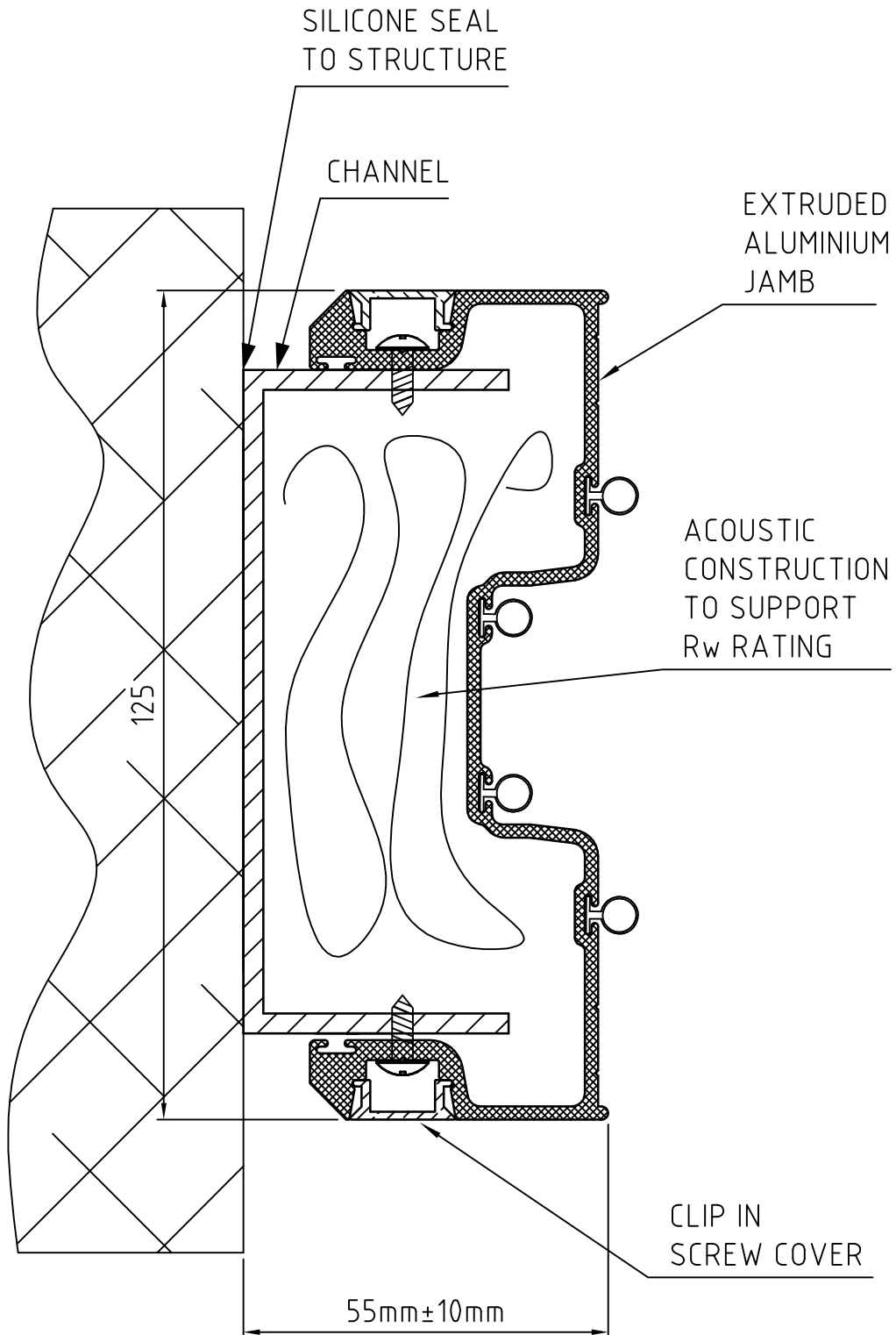
[www.lotusdoors.com.au](http://www.lotusdoors.com.au)





PLAN VIEW OF  
HINGED PANEL JOINT  
[ CENTRE STACKED PANELS ONLY ]

|   |                  |      |                 |  |                                 |  |
|---|------------------|------|-----------------|--|---------------------------------|--|
|   |                  |      | TITLE:          |  | 125 STANDARD                    |  |
|   |                  |      |                 |  | STILES AT PANEL JOINTS (HINGED) |  |
| REV   | REVISION REMARKS | DATE | PRODUCT:        |  | OPERABLE WALL                   |  |
| <br><a href="http://www.lotusdoors.com.au">www.lotusdoors.com.au</a> |                  |      | DRAWING NUMBER: |  | SEQUENCE NUMBER:                |  |
|   |                  |      | 125-09-0007     |  | 7                               |  |



TITLE:

125 STANDARD  
ADJUSTABLE PASSIVE JAMB

PRODUCT:

OPERABLE WALL

DRAWING NUMBER:

125-09-0008

SEQUENCE NUMBER:

8

**LOTUS**  
www.lotusdoors.com.au

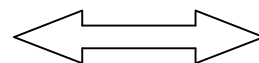
glas-STAX

operable walls

folding doors

30mm OVERSLEEVE WRAPPED IN SAME COVERING AS  
MAIN PANELS RESULTING IN MINIMAL VISUAL INTRUSION  
COMPARED TO ALUMINIUM OVERSLEEVES

140 TRAVEL NOM.  
TO PASSIVE JAMB



EXPANDER  
EXTRUSION

125 SERIES PANEL

185

125  
SERIES  
STILE

TITLE:

125 STANDARD  
EXPANDING PANEL DETAIL

PRODUCT:

OPERABLE WALL

DRAWING NUMBER:

125-09-0009

SEQUENCE NUMBER:

9

REV

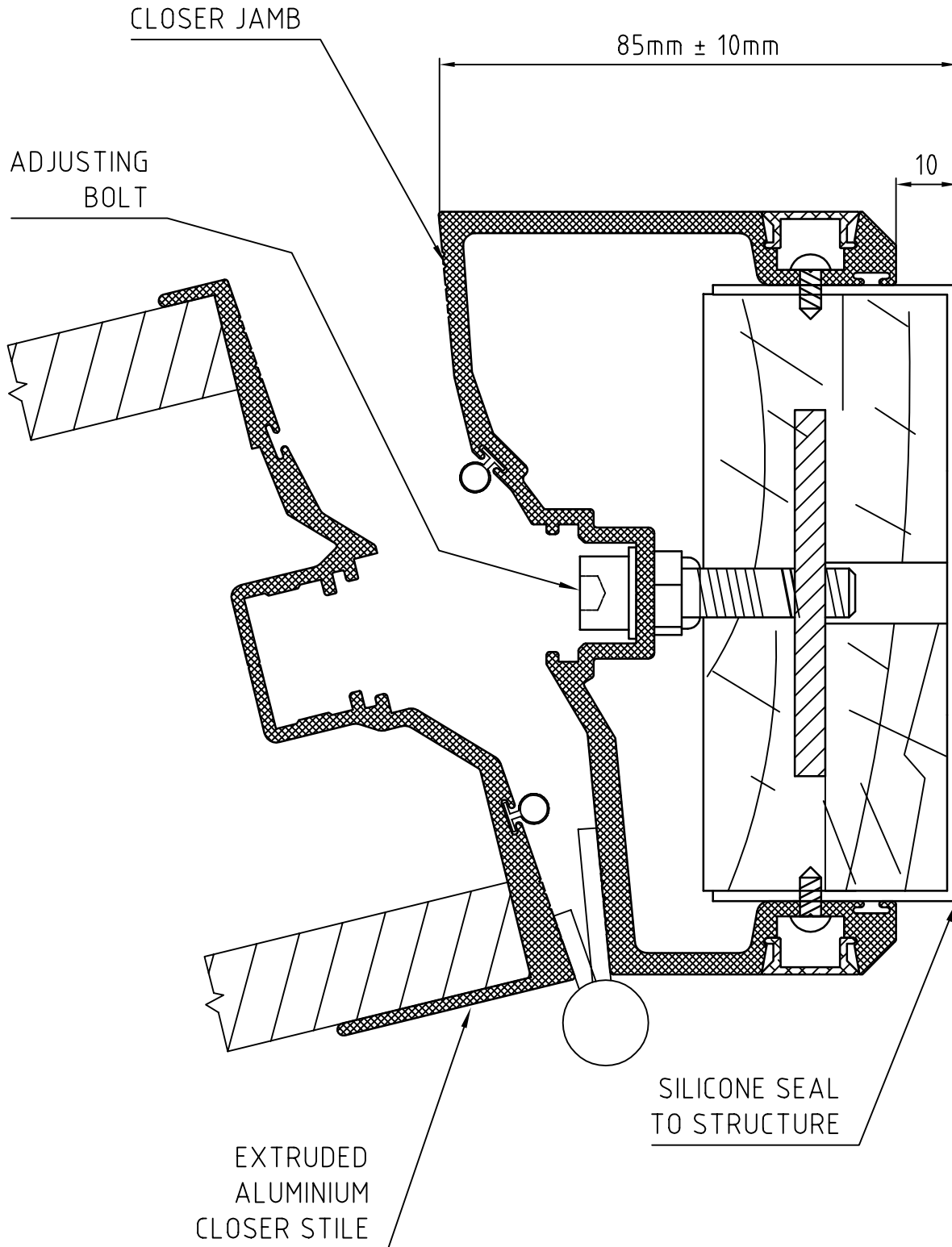
REVISION REMARKS

DATE

**LOTUS**

[www.lotusdoors.com.au](http://www.lotusdoors.com.au)

© COPYRIGHT LOTUS FOLDING WALLS & DOORS PTY LTD. REPRODUCTION PROHIBITED WITHOUT PERMISSION



| 1   | Design Change    | 23/03/11 |
|-----|------------------|----------|
| REV | REVISION REMARKS | DATE     |

TITLE: **125 STANDARD CLOSER JAMB FOR JAMB HUNG PASS DOOR**

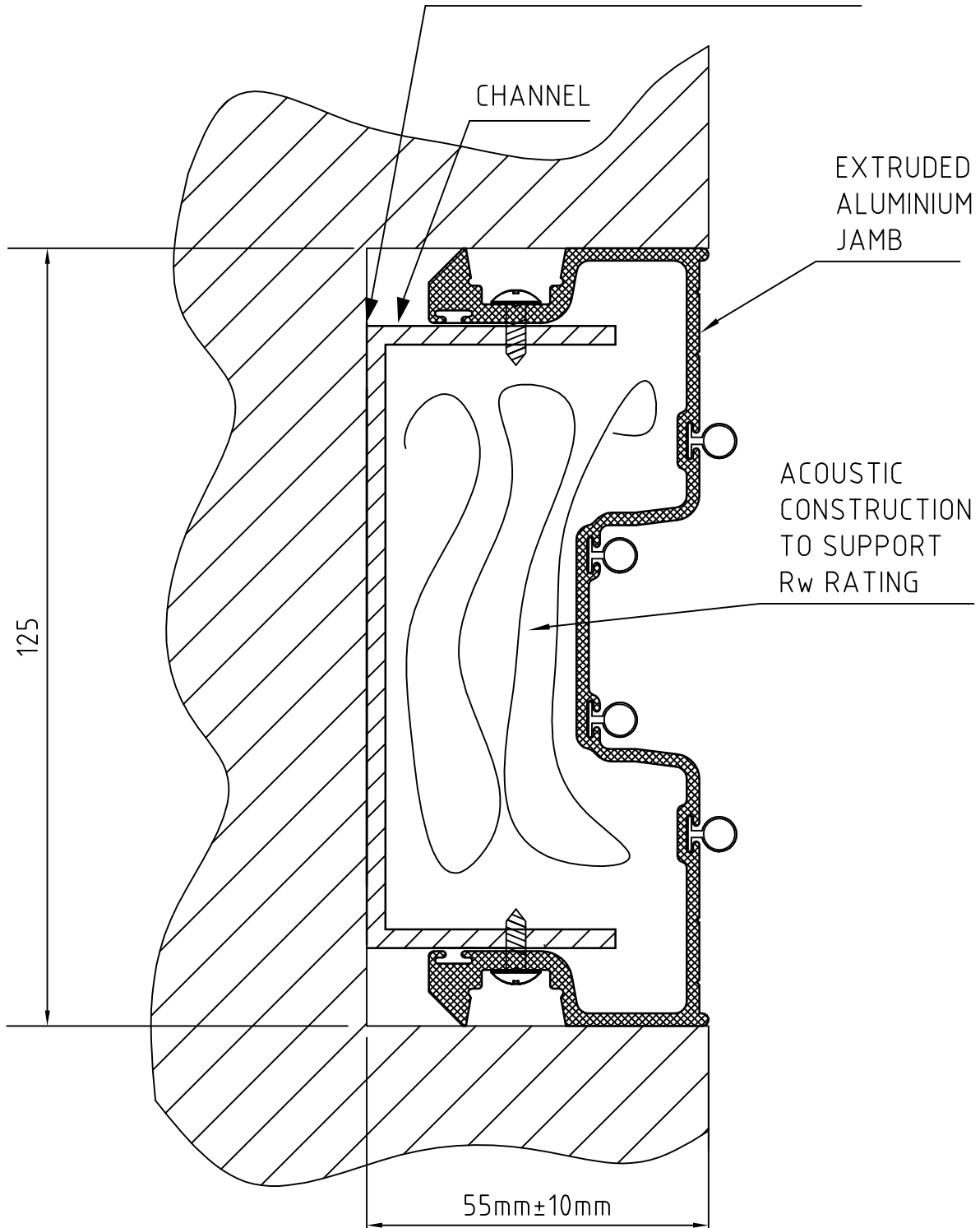
PRODUCT: **OPERABLE WALL**

DRAWING NUMBER: **125-09-0010**

SEQUENCE NUMBER: **10**

**LOTUS**  
www.lotusdoors.com.au

USE CONSTRUCTION ADHESIVE  
AND SUITABLE FASTENERS  
FOR STRUCTURE TO FIX CHANNEL



|     |                  |          |
|-----|------------------|----------|
| 1   | LAYOUT UPDATED   | 15-04-11 |
| REV | REVISION REMARKS | DATE     |

TITLE: 125 STANDARD  
ADJUSTABLE PASSIVE JAMB (RECESSED)

PRODUCT: OPERABLE WALL

DRAWING NUMBER:  
125-09-0011

SEQUENCE NUMBER:  
11

**LOTUS**  
www.lotusdoors.com.au