



65 Series Solid Acoustic Slider



Index of 65 Series Solid Acoustic Slider

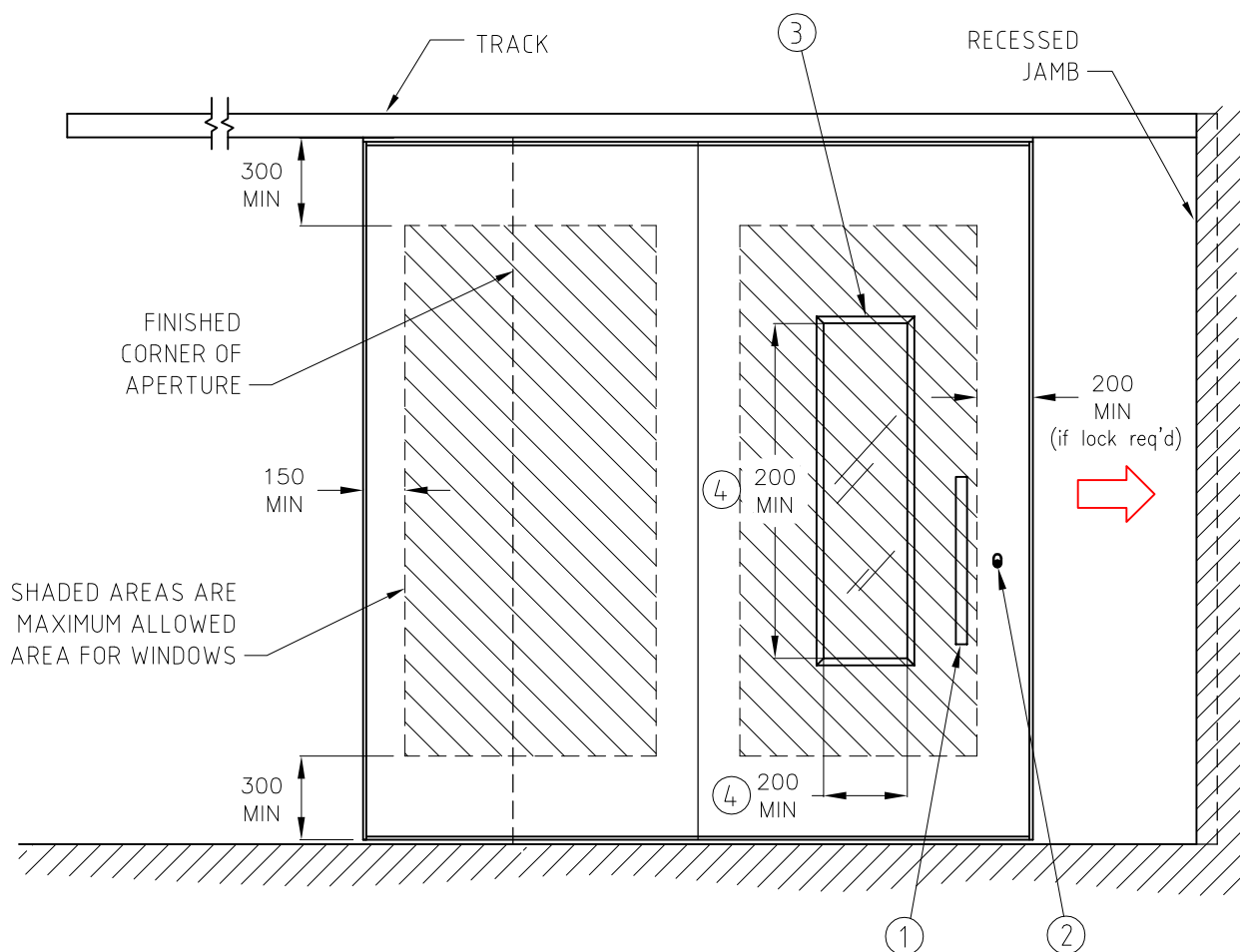
[illegible]



glas-STAX

operable walls

folding doors



- 1 OPTIONAL 600mm 'LOCKWOOD' ENTRANCE HANDLE - 141x600SSS
(NOTE: Almost any type of pull handle can be fitted; consult Lotus for any alternative specified handles. However at least one handle must be fitted on each side of the sliding panels to enable ease of operation)
- 2 PARROT BEAK LOCK (127mm backset) - To be used when locking off to jamb or between bi-parting panels
- 3 INSET WINDOW LOCATED WITHIN SINGLE MODULE - Minimum of 300mm required between perimeter of window & perimeter of panel module at top & bottom, 150mm at sides and 200mm at the leading edge if a lock is required - See shaded areas above (Note: Windows can occur in one module only due to panel construction)
- 4 MINIMUM WINDOW SIZE (i.e. visible glazing) - Both width and height is 200mm. For any smaller dimensions consult Lotus.

2	WINDOW LIMITS AMENDED & ADDED	05/10/10
1	WINDOW DETAILS AMENDED	28/07/10
REV	REVISION REMARKS	DATE

TITLE:

OPTIONS & ACCESSORIES

PRODUCT:

SLIDERS

DRAWING NUMBER:

S-09-0001

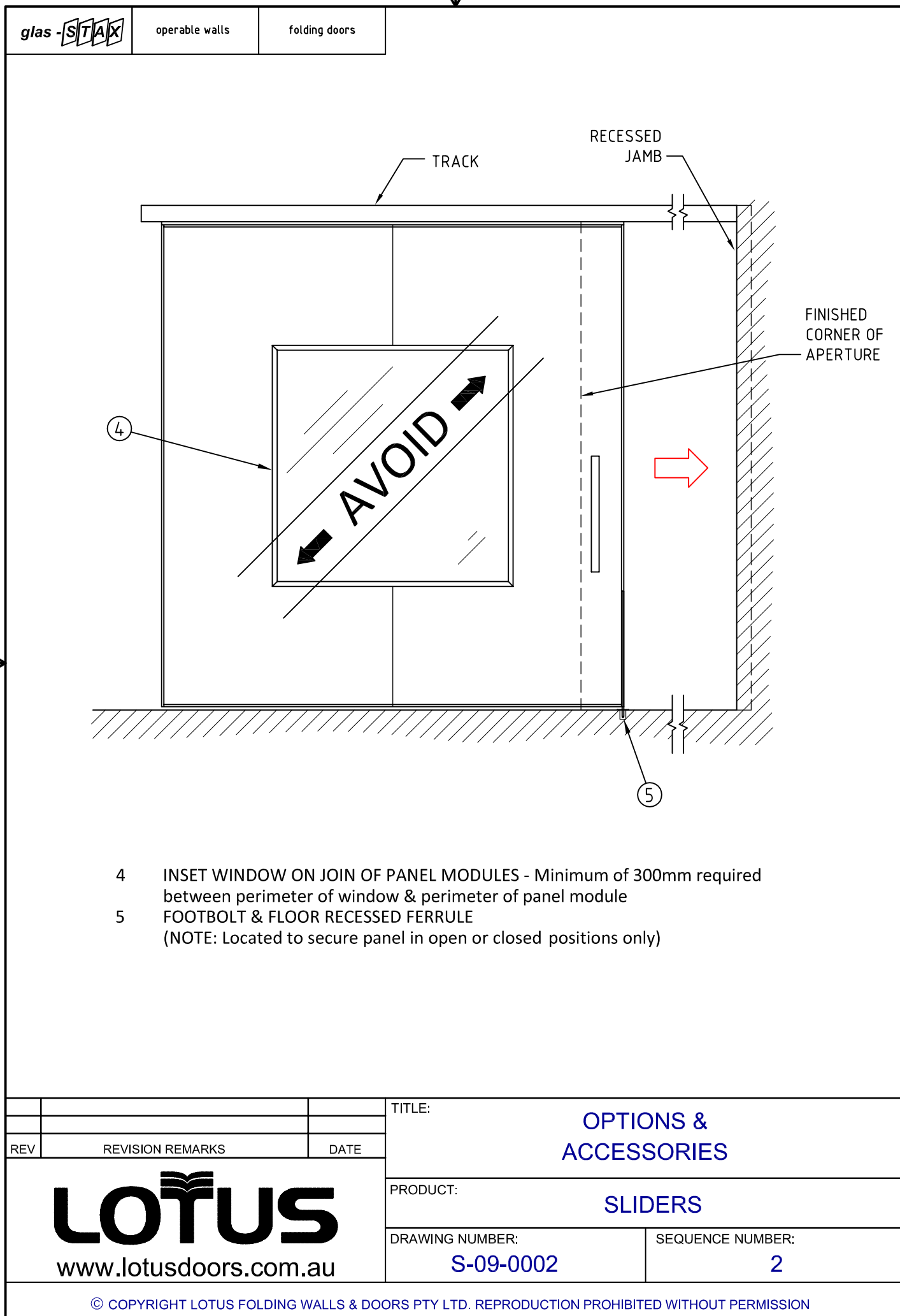
SEQUENCE NUMBER:

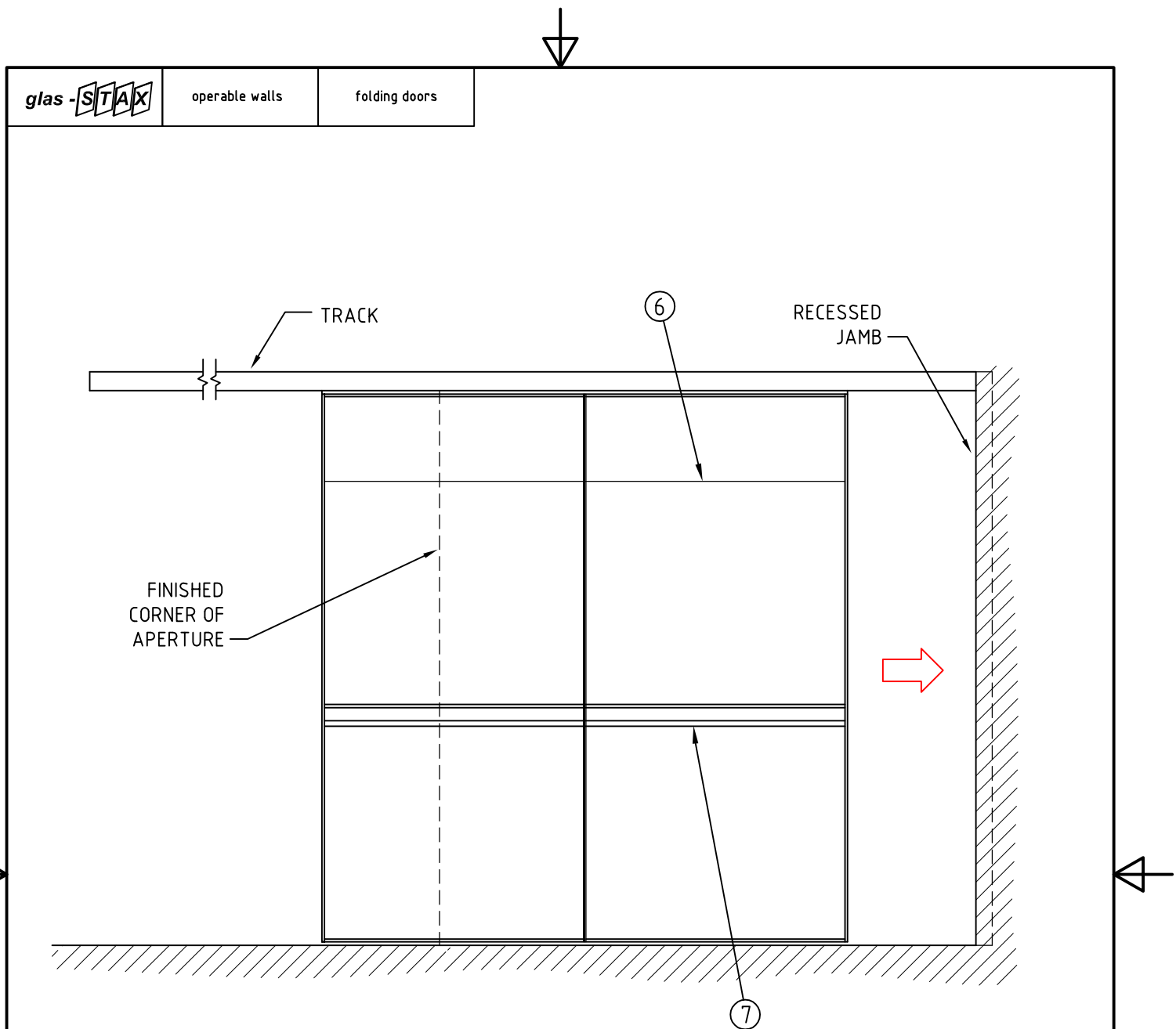
1

LOTUS
www.lotusdoors.com.au

© COPYRIGHT LOTUS FOLDING WALLS & DOORS PTY LTD. REPRODUCTION PROHIBITED WITHOUT PERMISSION

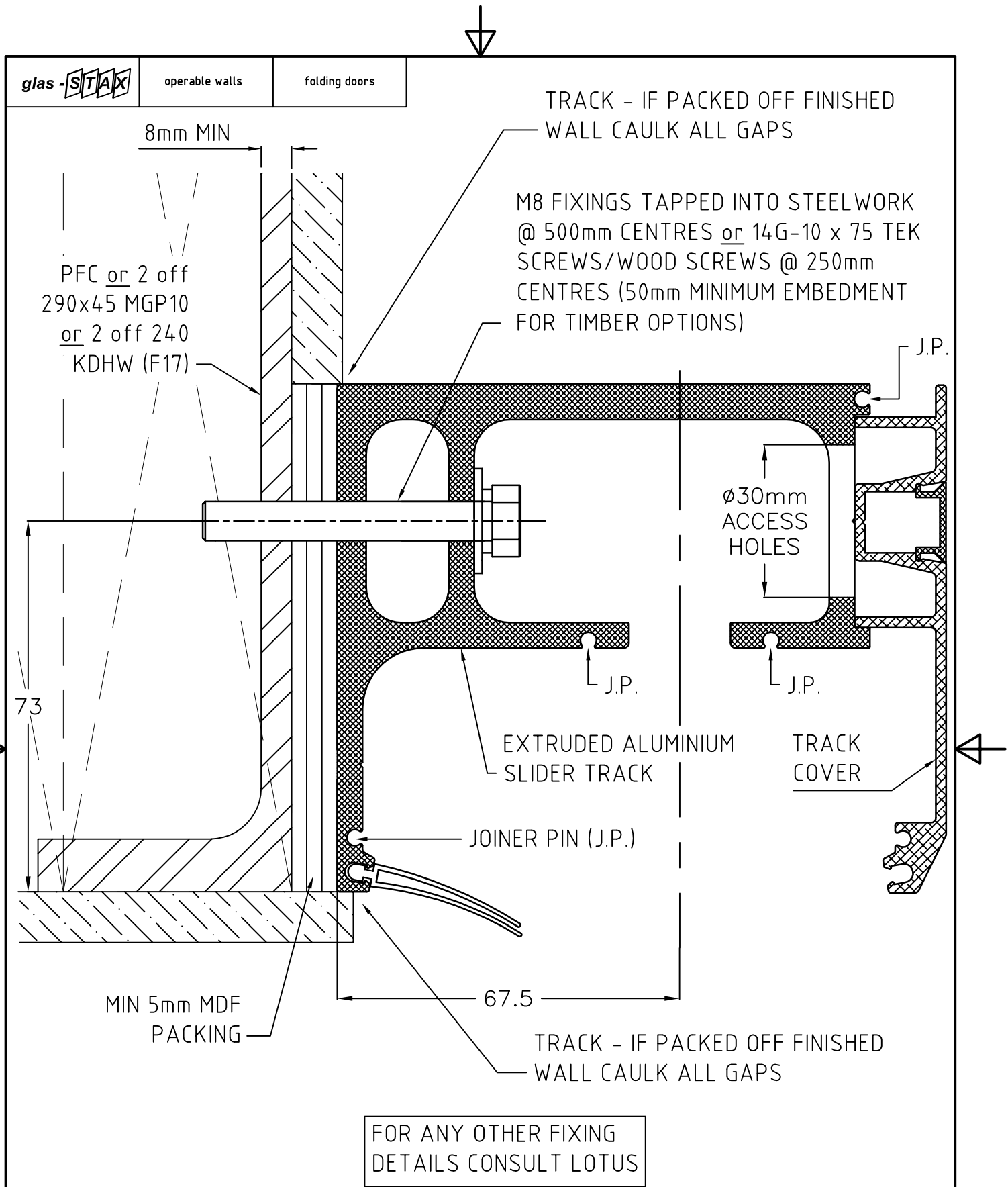







- 6 FLUSH MOUNTED MAGNETIC WHITEBOARDS, CHALKBOARDS & PINBOARDS -
 - Either full height or inset (height to be specified above floor level)
 NOTE: Exposed Intermediate Stile to be used due to edge finishing
- 7 RECESSED CHALK POCKET - Exposed Intermediate Stile to be used; Not to be included
 on Wall Side of last module for Face Mounted system or either side for Cavity
 system

1	STILE REFS AMENDED; CAVITY LIMITS	25/01/11	TITLE: OPTIONS & ACCESSORIES	
	ADDED			
REV	REVISION REMARKS	DATE	PRODUCT: SLIDERS	
LOTUS www.lotusdoors.com.au			DRAWING NUMBER: S-09-0003	SEQUENCE NUMBER: 3
			© COPYRIGHT LOTUS FOLDING WALLS & DOORS PTY LTD. REPRODUCTION PROHIBITED WITHOUT PERMISSION	



1	FIXING DETAILS AMENDED	08/03/11	TITLE: STANDARD TRACK FIXING DETAIL TO PARALLEL FLANGE CHANNEL (PFC)	
REV	REVISION REMARKS	DATE		
 www.lotusdoors.com.au			PRODUCT: SLIDERS	
			DRAWING NUMBER: S-09-0004	SEQUENCE NUMBER: 4

EXTRUDED ALUMINIUM
ACOUSTIC TRACK

4 WHEELED TROLLEY
WITH BEARINGS

8g x 10
PAN HEAD
SCREWS

CLIP IN
COVER

TRACK
COVER

EXTRUDED
ALUMINIUM
RAIL

SEAL CARRIER
- MUST BE FITTED
PRIOR TO
HANGING PANEL

SWEEP SEALS
BRUSH AGAINST
RAIL ONLY

TITLE:

SLIDER WITH TRIMMED TOP SWEEP SEALS
& 4 WHEELED TROLLEY WITH BEARINGS

PRODUCT:

SLIDERS

DRAWING NUMBER:

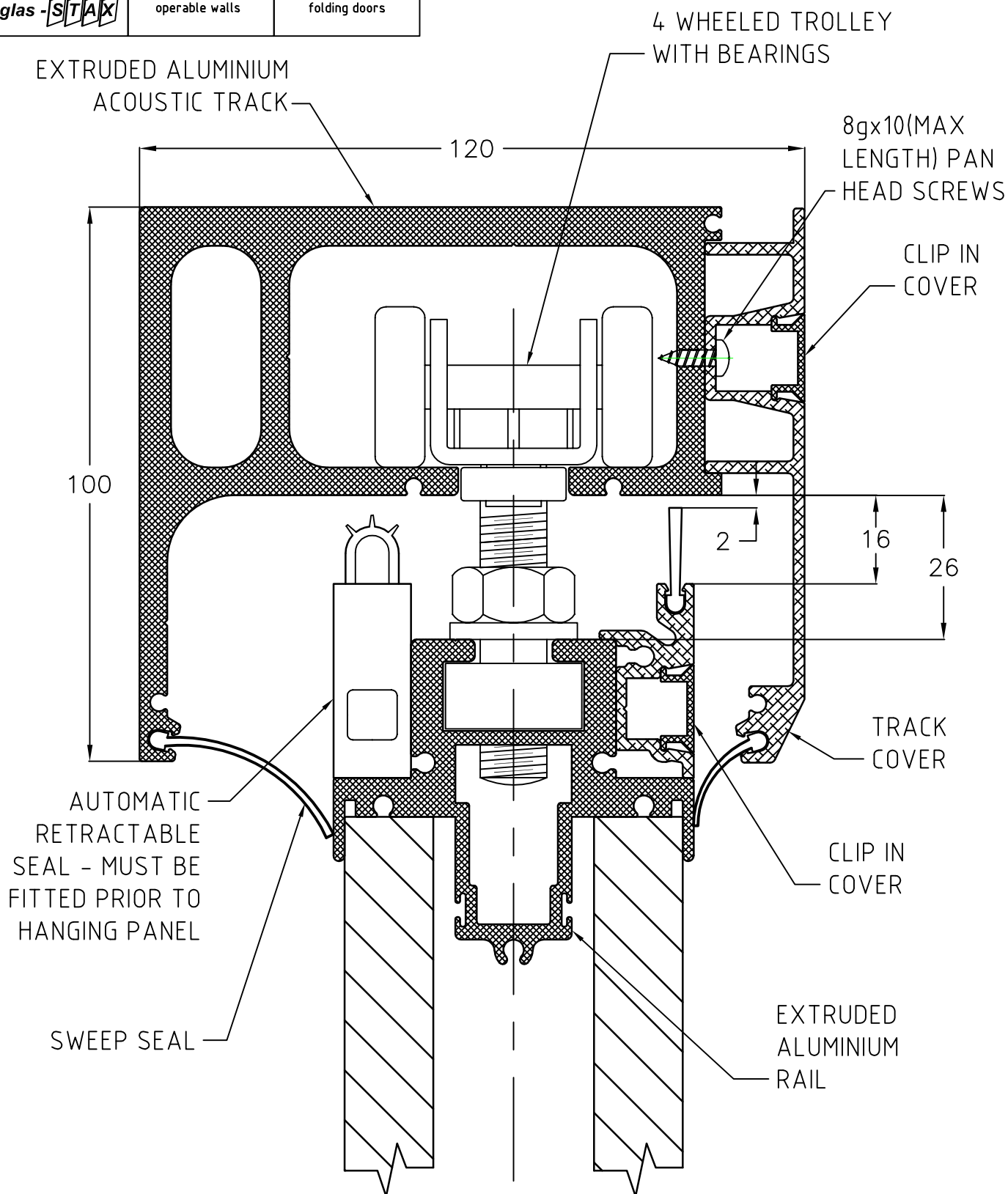
S-09-0005

SEQUENCE NUMBER:

5

LOTUS

www.lotusdoors.com.au



REV	REVISION REMARKS	DATE

TITLE:

SLIDER WITH TRIMMED TOP SWEET SEAL
& AUTOMATIC TOP RETRACTABLE SEAL

PRODUCT:

SLIDERS

DRAWING NUMBER:

S-09-0006

SEQUENCE NUMBER:

6

LOTUS

www.lotusdoors.com.au



65

NYLON FLOOR - GUIDE

- SEAL CARRIER

APPROX 13mm

CLIP IN
COVER

TRIMMED
BOTTOM SEALS

- 6g CSK SCREWS

2

TITLE:

SLIDER WITH TRIMMED BOTTOM SWEEP SEALS

PRODUCT:

SLIDERS

DRAWING NUMBER:

S-09-0007

SEQUENCE NUMBER:

7

LOTUS
www.lotusdoors.com.au

© COPYRIGHT LOTUS FOLDING WALLS & DOORS PTY LTD. REPRODUCTION PROHIBITED WITHOUT PERMISSION





65

EXTRUDED
- ALUMINIUM RAIL

8g x 10 PAN
- HEAD SCREWS

- SEAL CARRIER

NYLON FLOOR GUIDE

- 13mm

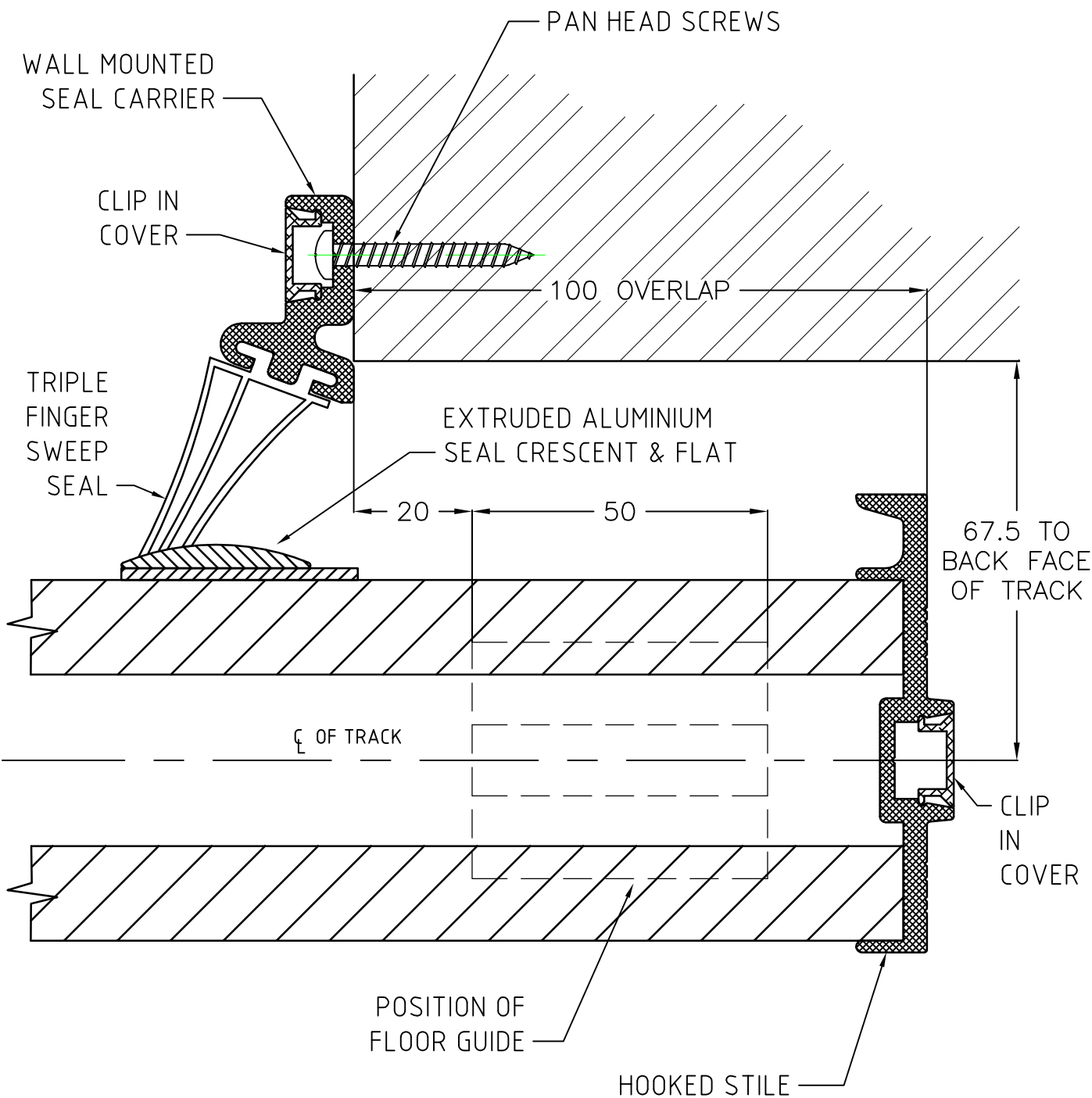
2 -

AUTOMATIC
RETRACTABLE SEAL

© COPYRIGHT LOTUS FOLDING WALLS & DOORS PTY LTD. REPRODUCTION PROHIBITED WITHOUT PERMISSION



9



1	SEAL CRESCENT DETAIL AMENDED	11/03/11
REV	REVISION REMARKS	DATE

TITLE:

SLIDER - 1 x WALL MOUNTED VERTICAL SEAL (PANEL IN CLOSED POSITION)

PRODUCT:

SLIDERS

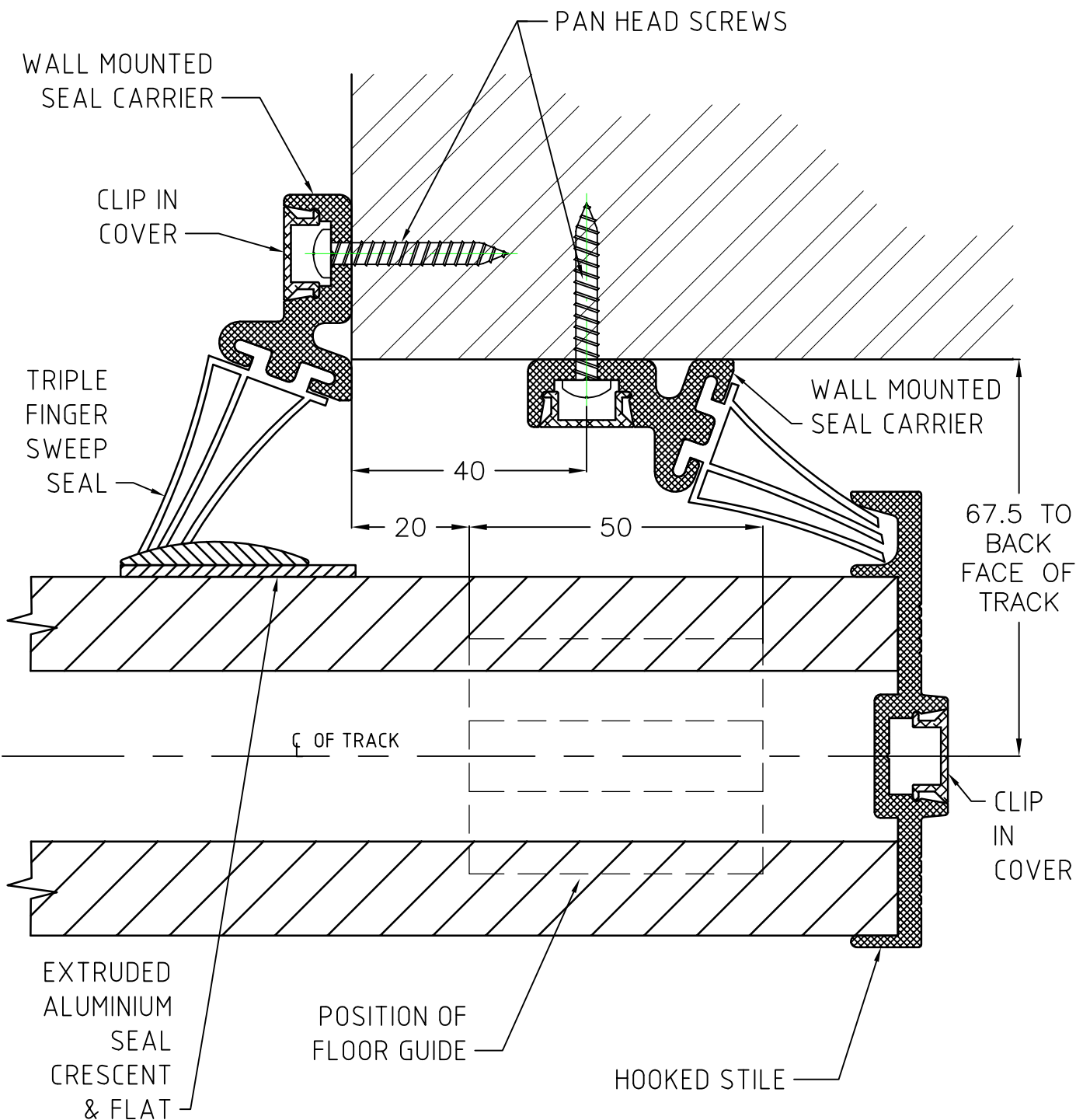
DRAWING NUMBER:

S-09-0010

SEQUENCE NUMBER:

10

LOTUS
www.lotusdoors.com.au



1	SEAL CRESCENT DETAIL AMENDED	11/03/11
REV	REVISION REMARKS	DATE

TITLE:

SLIDER - 2 x WALL MOUNTED VERTICAL SEALS (PANEL IN CLOSED POSITION)

PRODUCT:

SLIDERS

DRAWING NUMBER:

S-09-0011

SEQUENCE NUMBER:

11

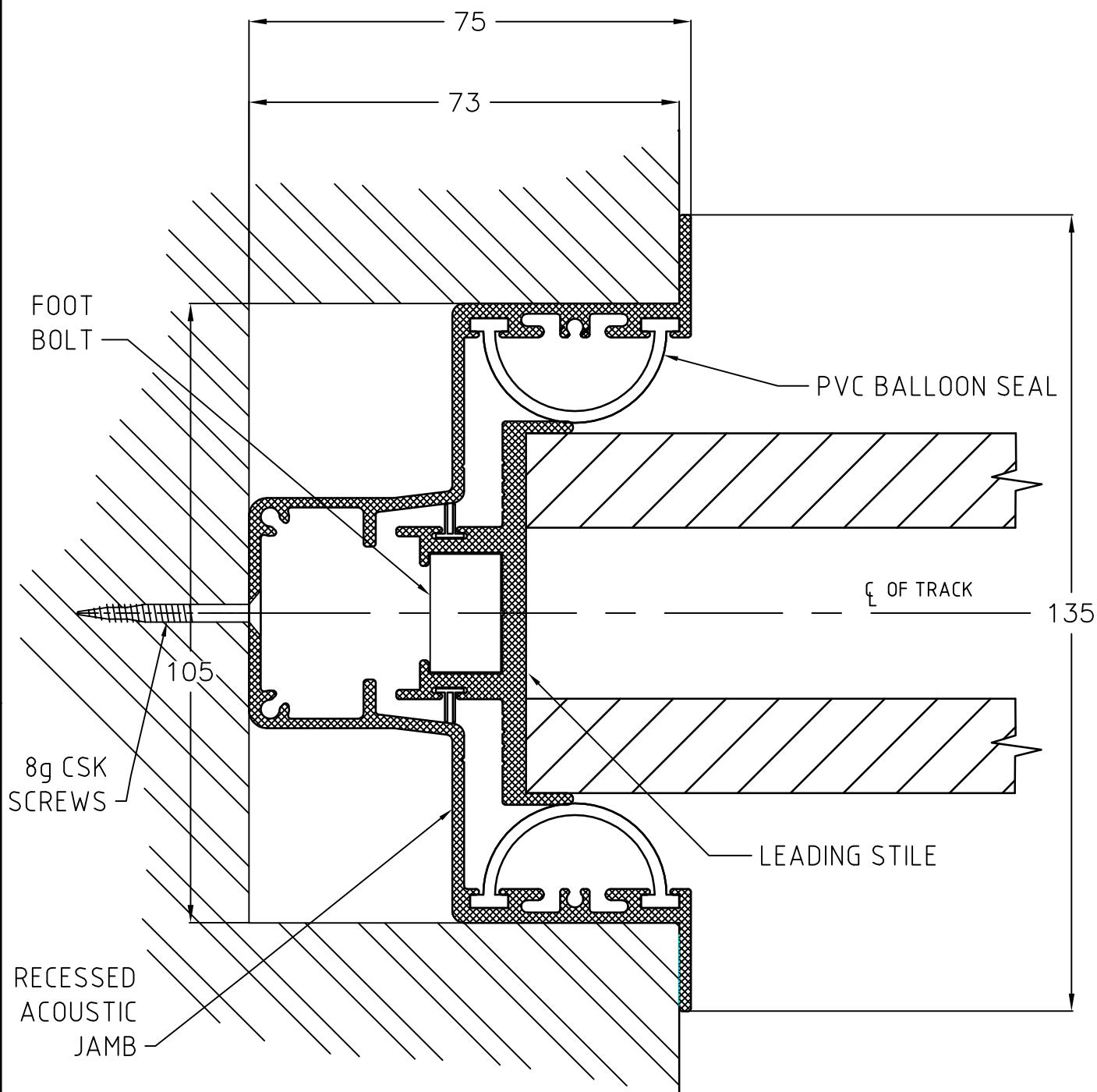
LOTUS
www.lotusdoors.com.au



glas-STAX

operable walls

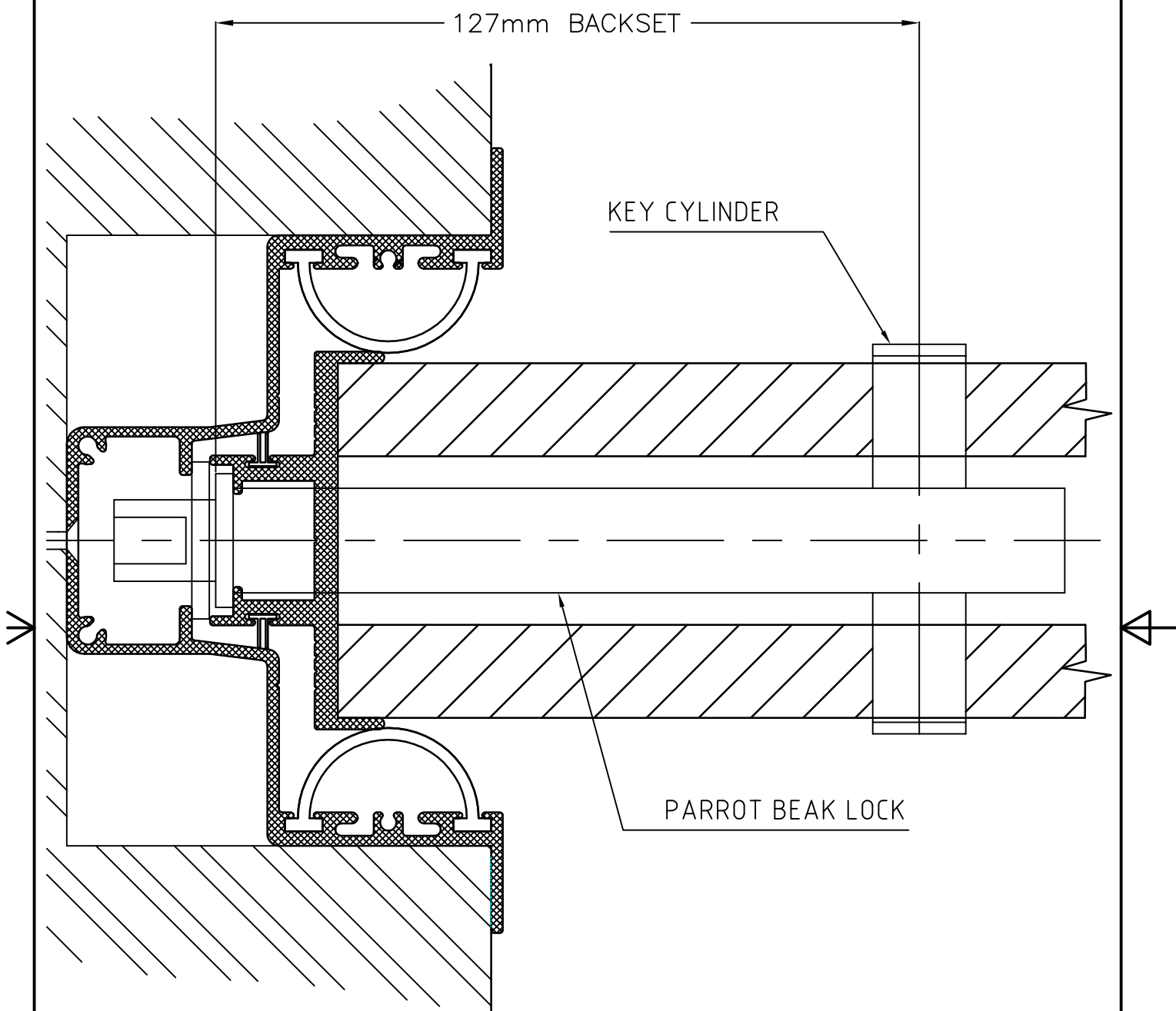
folding doors



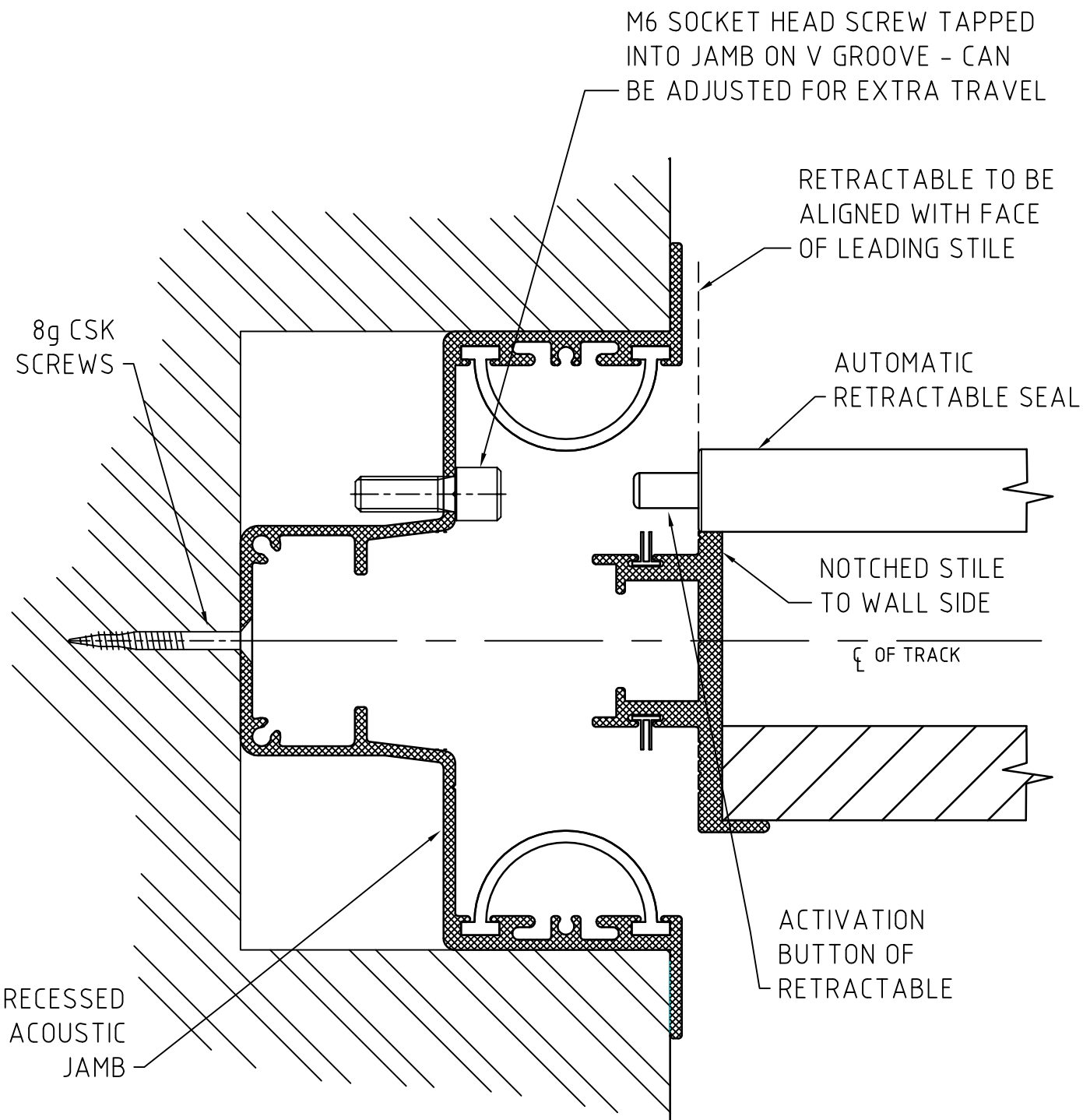
			TITLE:		SLIDER RECESSED JAMB
			PRODUCT:		SLIDERS
			DRAWING NUMBER:	SEQUENCE NUMBER:	
			S-09-0012	12	
© COPYRIGHT LOTUS FOLDING WALLS & DOORS PTY LTD. REPRODUCTION PROHIBITED WITHOUT PERMISSION					



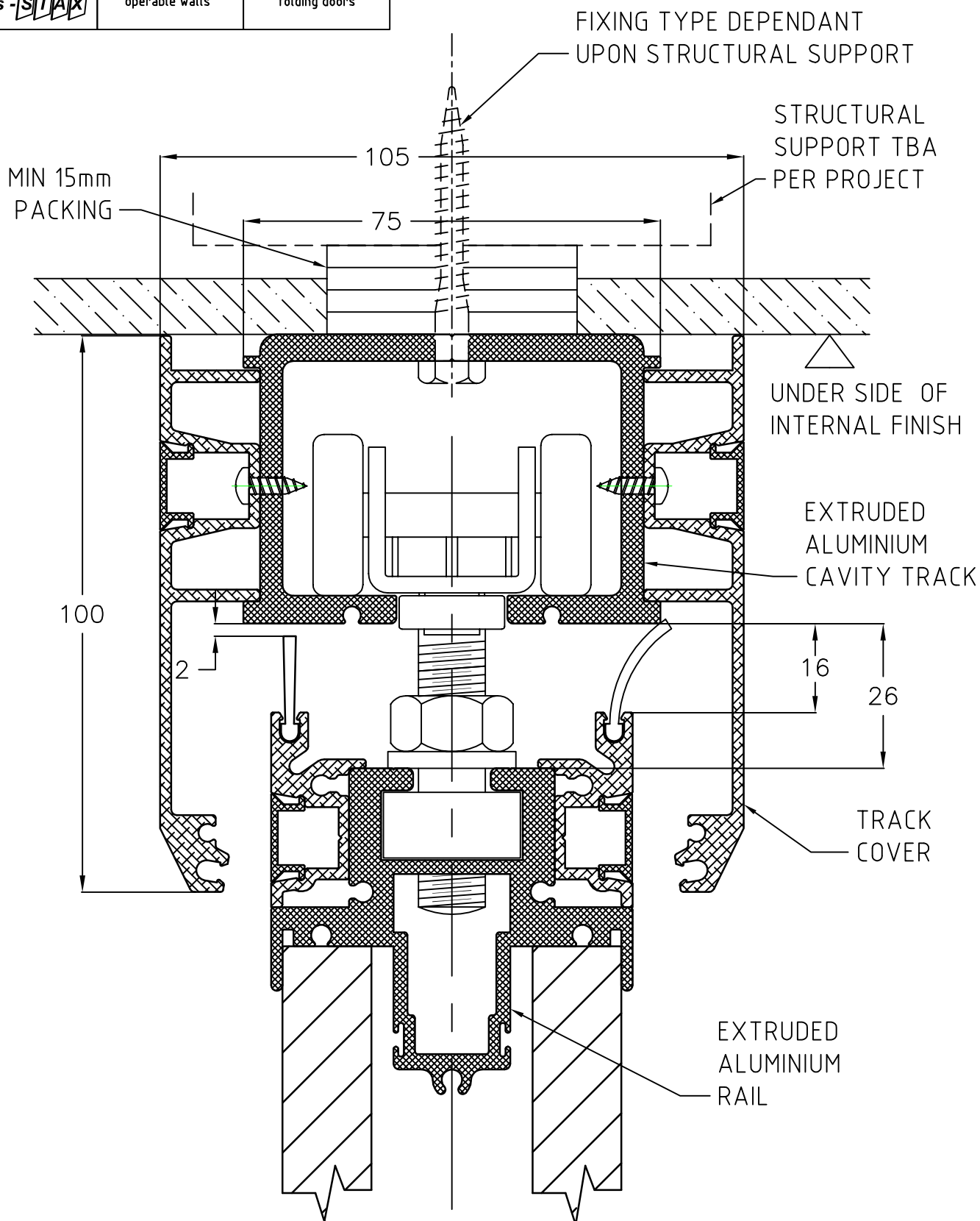
LOTUS
www.lotusdoors.com.au



			TITLE: SLIDER RECESSED JAMB & LOCK	
REV	REVISION REMARKS	DATE		
<div>LOTUS</div> <div>www.lotusdoors.com.au</div>			PRODUCT: SLIDERS	
			DRAWING NUMBER: S-09-0013	SEQUENCE NUMBER: 13



			TITLE: SLIDER - RECESSED JAMB & RETRACTABLE ACTIVATION SCREW	
REV	REVISION REMARKS	DATE	PRODUCT: SLIDERS	
LOTUS www.lotusdoors.com.au			DRAWING NUMBER: S-09-0014	SEQUENCE NUMBER: 14
			© COPYRIGHT LOTUS FOLDING WALLS & DOORS PTY LTD. REPRODUCTION PROHIBITED WITHOUT PERMISSION	



1	HEAD DETAIL & SEAL CONFIGURATION	25/01/11
	AMENDED	
REV	REVISION REMARKS	DATE

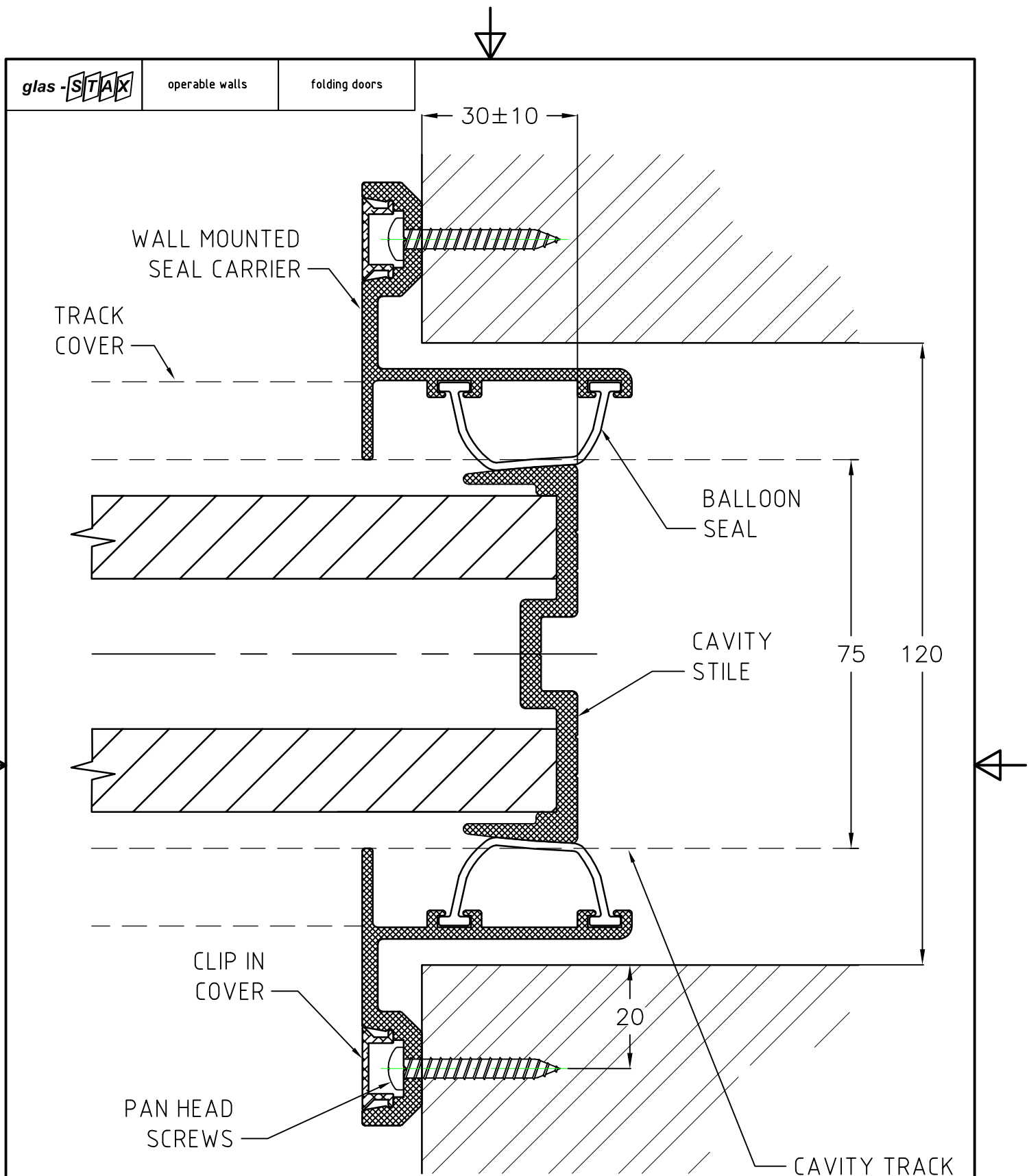
TITLE: **SLIDER - CAVITY TRACK
FIXING DETAIL**


PRODUCT: **SLIDERS**

DRAWING NUMBER: **S-09-0015**

SEQUENCE NUMBER: **15**

LOTUS
www.lotusdoors.com.au



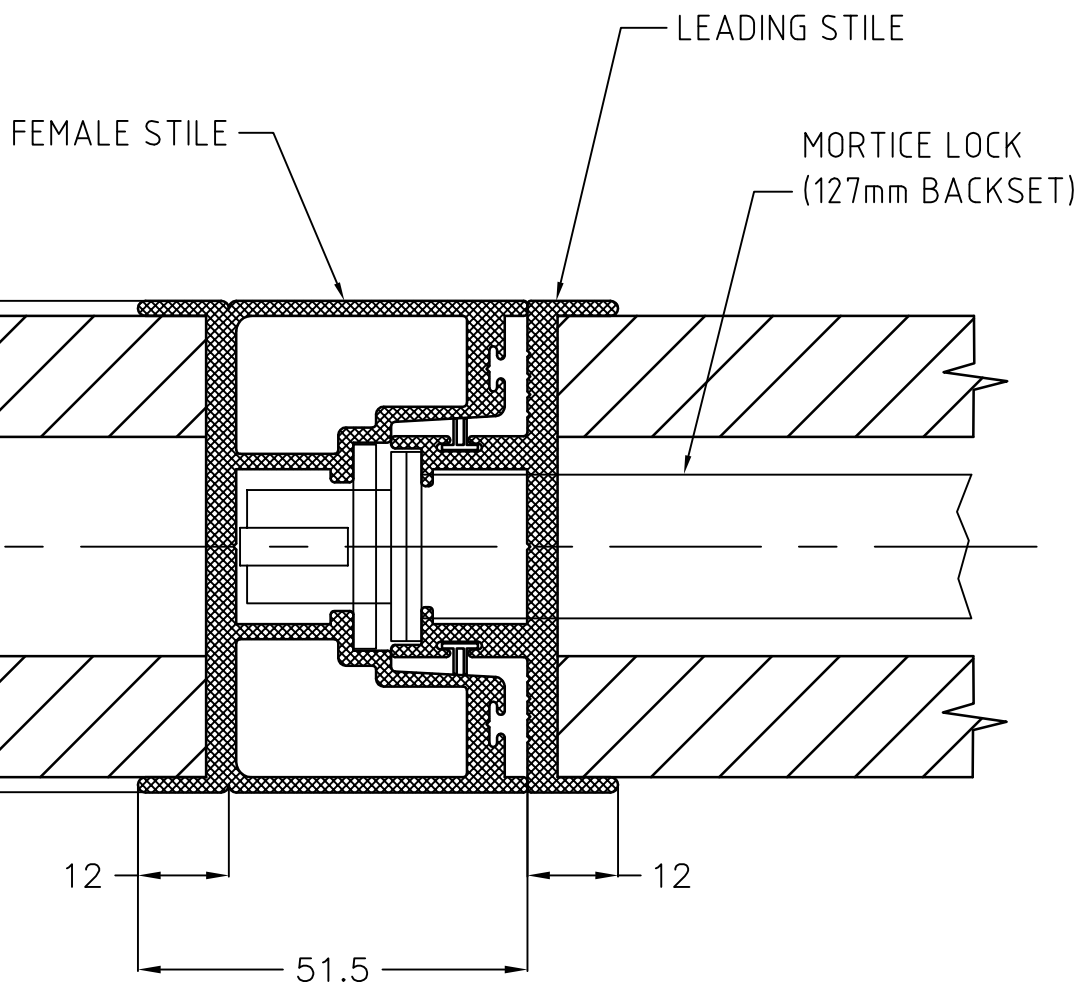
			TITLE: SLIDER - CAVITY WALL MOUNTED SEAL CARRIERS
REV	REVISION REMARKS	DATE	
 www.lotusdoors.com.au			PRODUCT: SLIDERS
			DRAWING NUMBER: S-09-0016
© COPYRIGHT LOTUS FOLDING WALLS & DOORS PTY LTD. REPRODUCTION PROHIBITED WITHOUT PERMISSION			



glas-STAX

operable walls

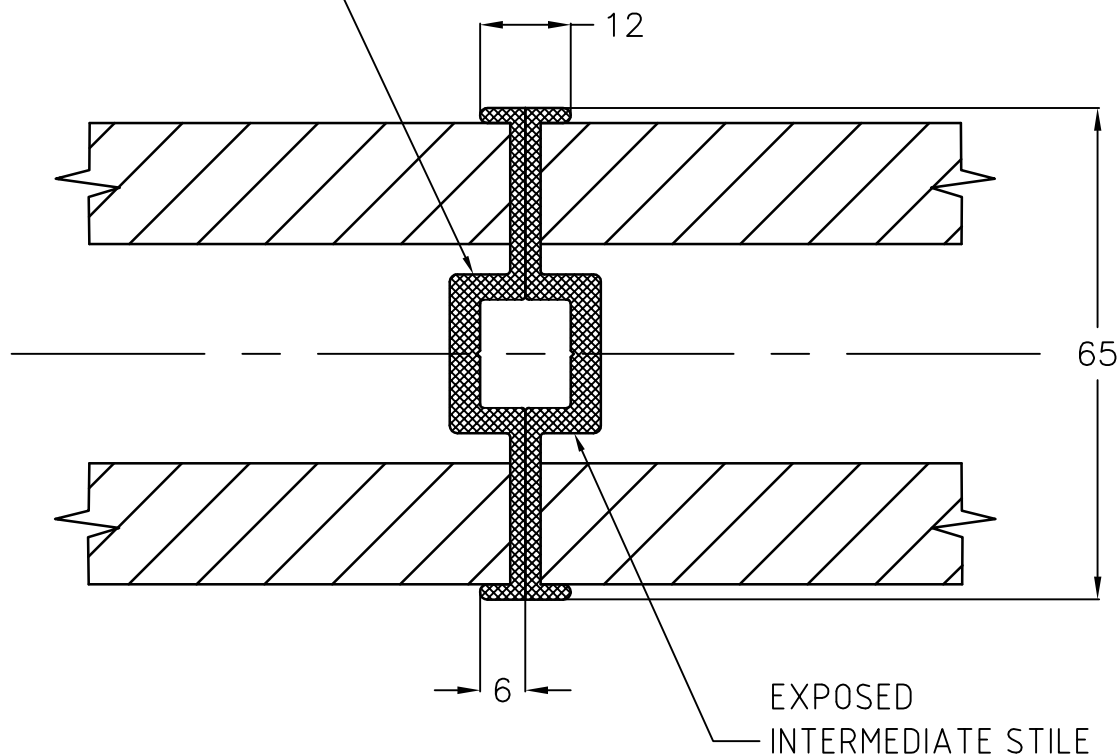
folding doors



			TITLE: SLIDER - BI-PARTING PANELS MEETING STILES	
1	BULB SEALS OMITTED	25/01/11		
REV	REVISION REMARKS	DATE		
LOTUS www.lotusdoors.com.au			PRODUCT: SLIDERS	
			DRAWING NUMBER: S-09-0017	SEQUENCE NUMBER: 17
© COPYRIGHT LOTUS FOLDING WALLS & DOORS PTY LTD. REPRODUCTION PROHIBITED WITHOUT PERMISSION				



EXPOSED
INTERMEDIATE STILE



1	DRAWING TITLE AMENDED	03/11/10
REV	REVISION REMARKS	DATE

TITLE:

**65mm ACOUSTIC SLIDER
EXPOSED INTERMEDIATE STILES**

PRODUCT:

SLIDERS

DRAWING NUMBER:

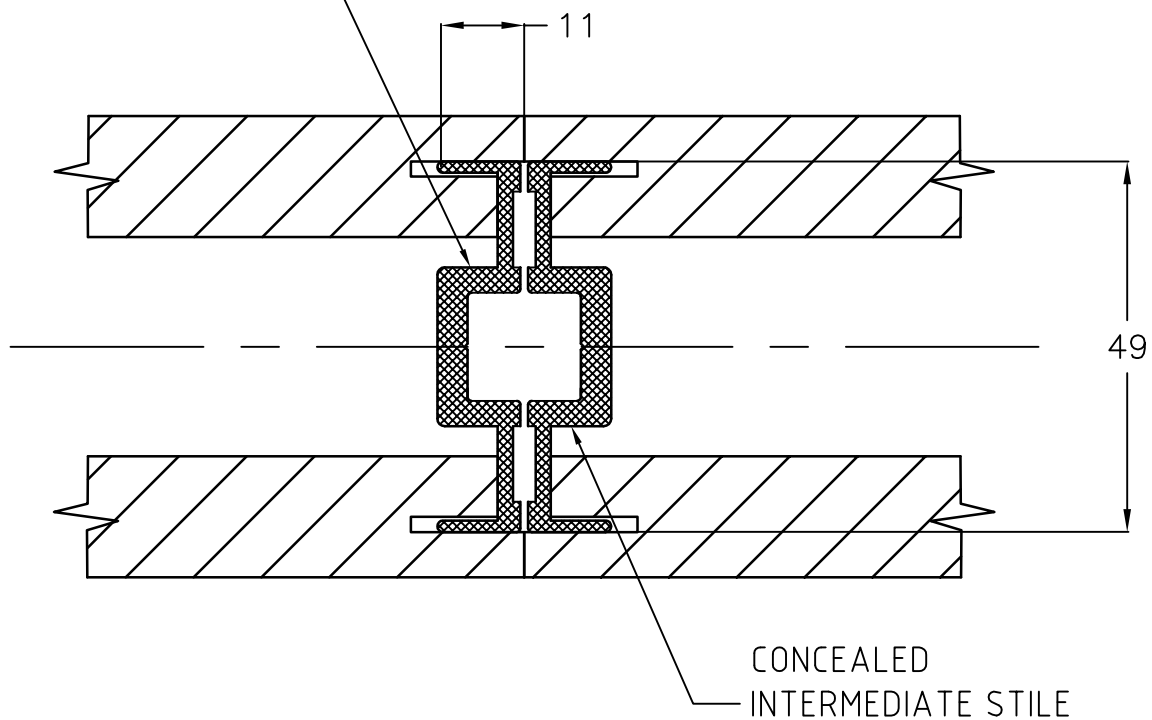
S-09-0018

SEQUENCE NUMBER:

18

LOTUS
www.lotusdoors.com.au

CONCEALED
INTERMEDIATE STILE



CONCEALED
INTERMEDIATE STILE

1	DRAWING TITLE AMENDED	03/11/10
REV	REVISION REMARKS	DATE

TITLE:

**65mm ACOUSTIC SLIDER
CONCEALED INTERMEDIATE STILES**

PRODUCT:

SLIDERS

DRAWING NUMBER:

S-09-0019

SEQUENCE NUMBER:

19

LOTUS
www.lotusdoors.com.au