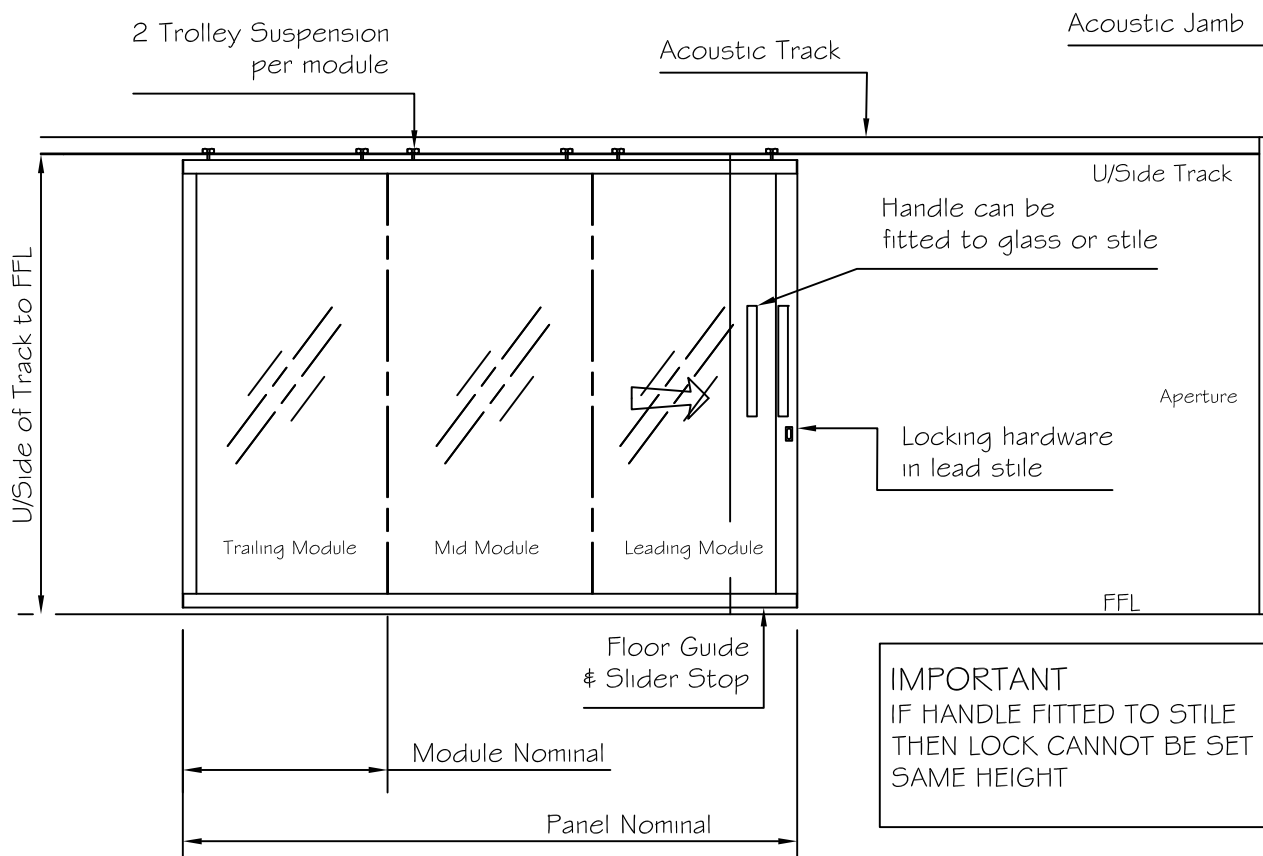






80 Series Acoustic Glass Slider - WEB CAD Drawing Index

Drawing #	Description	Sequence #
GSL-080-0001.1	Glass Slider general notes	1
GSL-080-0002	Human Impact limitations on height and modules	2
GSL-080-0003	Face mounted acoustic track and top rail	3
GSL-080-0004	Cavity slider track and top rail	4
GSL-080-0005	Type 1 seal detail and bottom rail	5
GSL-080-0006	Type 2 seal detail and bottom rail	6
GSL-080-0007	Type 4 seal detail and bottom rail for cavity slider only	7
GSL-080-0008.1	Wall mounted vertical seal detail	8
GSL-080-0009.1	Cavity wall vertical balloon seal	9
GSL-080-0010.1	Acoustic jamb with 80mm stile and 30mm backset	10
GSL-080-0011	Acoustic jamb with 110mm stile and 60mm backset	11
GSL-080-0012.1	Bi-Parting Stile	12
GSL-080-0013	Face fixed acoustic track fixing	13
GSL-080-0014.1	Bi-Parting junction (90 degree face fixed)	14
GSL-080-0015.1	Bi-Parting junction (90 degree internal cavity)	15
GSL-080-0016.2	Bi-Parting (Face fixed)	16
GSL-080-0017.2	Bi-Parting junction cavity fixed	17
GSL-080-0018.1	3-Way junction (Option 1A)	18
GSL-080-0019.1	3-Way junction (Option 1B)	19
GSL-080-0020.1	3-Way junction (Option 2A)	20
GSL-080-0021.1	3-Way junction (Option 2B)	21
GSL-080-0022.1	3-Way junction (Option 3A)	22
GSL-080-0023.1	3-Way junction (Option 3B)	23
GSL-080-0024.1	3-Way junction (Balloon Bumper - Option A)	24
GSL-080-0025.1	3-Way junction (Balloon Bumper - Option B)	25

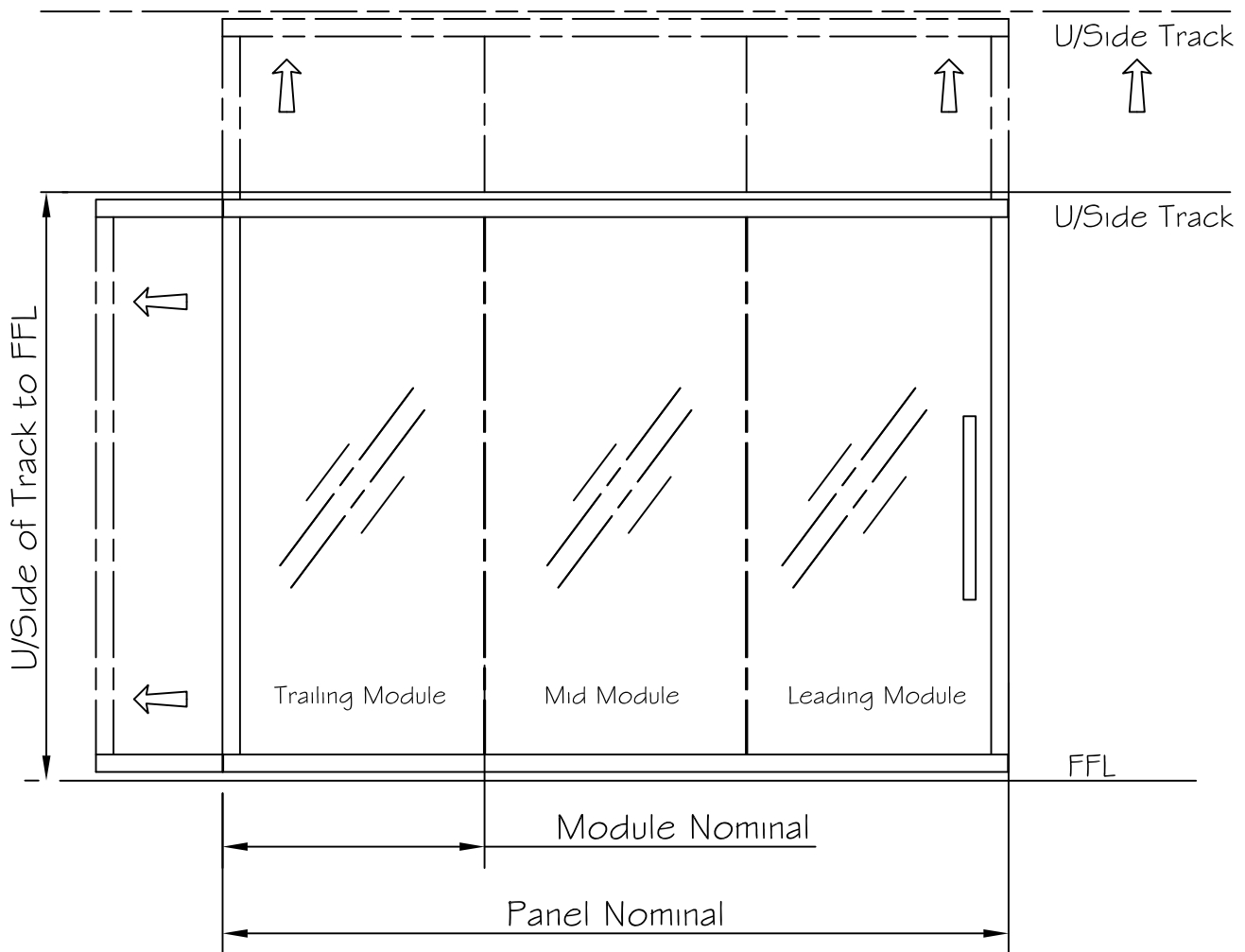


Notes:

- 1) Single Glazed Acoustic Slider can be either Face fixed or Cavity mounted.
- 2) Available in either 10mm or 12mm Toughened Glass.
- 3) Tested at a NATA certified laboratory and reports available from Rw30 through to a Rw34.
- 4) Lotus standard 80mm framing.
- 5) Option of 110mm lead stile.
- 6) Both Stiles accept sliding door locking hardware - (Check with Lotus for specification).
- 7) Face fixed Slider centreline of track to face of wall is 67.5mm.
- 8) Clearance from face of slider to wall is 27.5mm.
- 9) Minimum cavity is 135mm.
- 10) Type 1 and Type 2 Seal options for Face fixed configuration.
- 11) Type 1, 2 & 4 Seal options for Cavity configurations.
- 12) Sliders can be configured to meet DDA for opening force and handle design & position.
- 13) Consult Lotus for maximum heights and Nominal restrictions to meet Human Impact & DDA
- 14) Weight of 10mm Glass Slider is 34kg/m²
- 15) Weight of 12mm Glass Slider is 38kg/m²

TITLE: GLASS_SLIDER_GENERAL_NOTES

REV	REVISION DETAILS	DATE	<small>© COPYRIGHT LOTUS FOLDING WALLS & DOORS PTY LTD. REPRODUCTION PROHIBITED WITHOUT PERMISSION. CHANGES TO THE DESIGN AND OR DETAILS OF THIS DRAWING MUST NOT BE MADE WITHOUT PERMISSION OF THE D&D MANAGER. DO NOT SCALE FROM THIS DRAWING. CHECK ALL DIMENSIONS WITH THE D&D DEPARTMENT.</small> LOTUS WWW.LOTUSDOORS.COM.AU ABN 61 007 087 523	SEQUENCE: 1	REV 1
1	HANDLE-&-LOCK-HEIGHT-OFFSET	28-05-14			
REV_B	REV_B_REMARKS	RDATEB			
REV_C	REV_C_REMARKS	RDATEC			
REV_D	REV_D_REMARKS	RDATED			
PRODUCT: 80-GLASS_SLIDERS			DRAWING NUMBER: GSL-080-0001		



Limitations 10mm Glass System at 34kgm/2

Sweep Seals - Type 1

U/Side Track to FFL from 2.695 to 2.995metres and

Retractable Seals - Type 2 & 4

U/Side Track to FFL from 2.665 to 2.695metres then maximum number of modules can be 3 with a maximum module nominal of 1.2 metres Hence overall panel nominal cannot exceed 3.6 metres

U/side Track to FFL below 2.695 metres [any seal type]
then no limit to number of modules or nominal in regards to human impact, however track fixing and panel weight restrictions will apply, therefore consult with Lotus.

Limitations 12mm Glass System at 38kgm/2

Sweep Seals - Type 1

U/Side Track to FFL from 2.995 to 3.195metres and

Retractable Seals - Type 2 & 4

U/Side Track to FFL from 2.965 to 3.165metres then maximum number of modules can be 3 with a maximum module nominal of 1.2 metres Hence overall panel nominal cannot exceed 3.6 metres

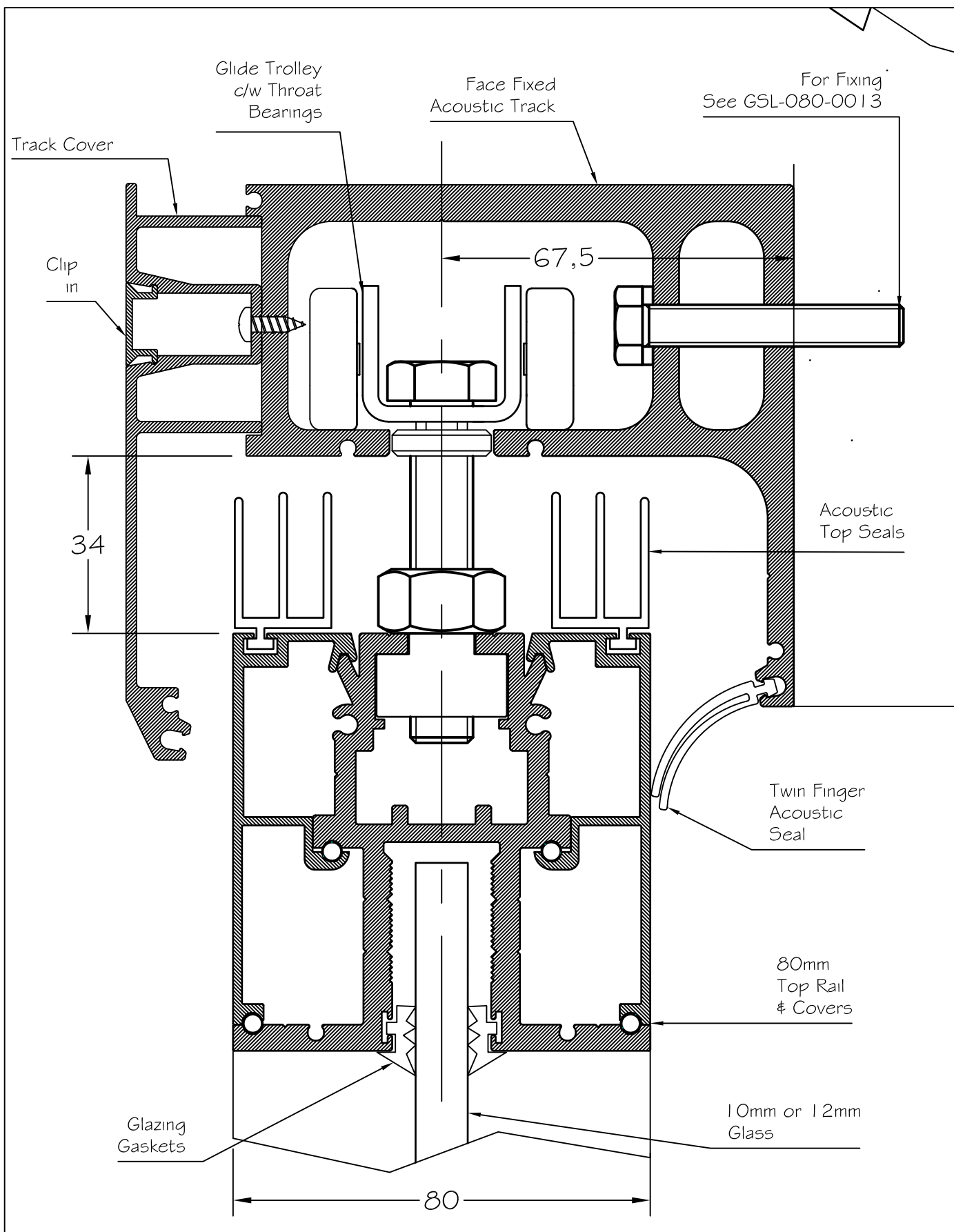
U/side Track to FFL below 2.995 metres [any seal type]
then no limit to number of modules or nominal in regards to human impact, however track fixing and panel weight restrictions will apply, therefore consult with Lotus.

To resist impact force, modules less than 700mm are not allowed. Preferably keep modules to or greater than 1000mm.

TITLE:

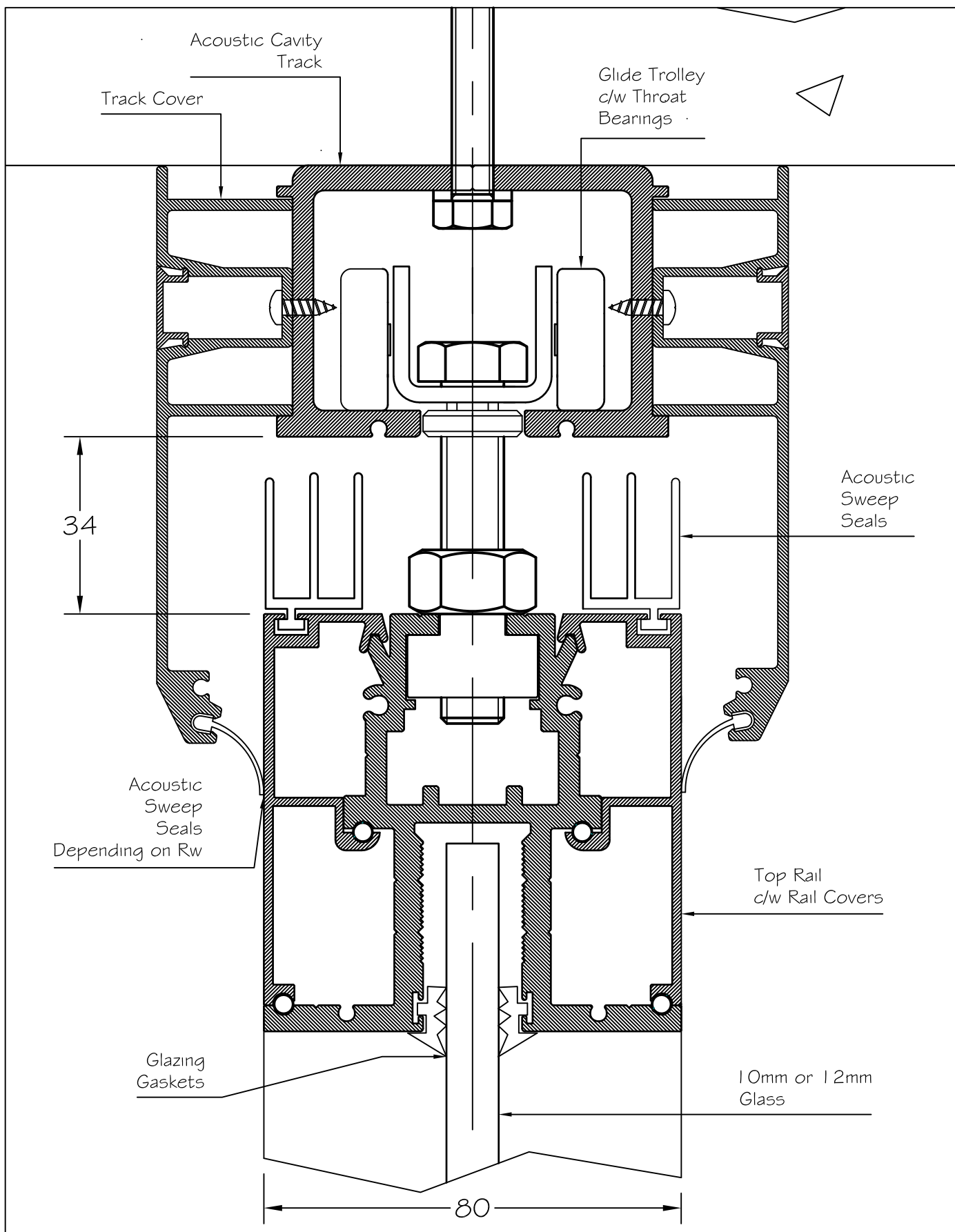
HUMAN_IMPACT_LIMITATIONS_ON_HEIGHT_AND_MODULES

REV	REVISION DETAILS	DATE	© COPYRIGHT LOTUS FOLDING WALLS & DOORS PTY LTD. REPRODUCTION PROHIBITED WITHOUT PERMISSION. CHANGES TO THE DESIGN AND OR DETAILS OF THIS DRAWING MUST NOT BE MADE WITHOUT PERMISSION OF THE D&D MANAGER. DO NOT SCALE FROM THIS DRAWING. CHECK ALL DIMENSIONS WITH THE D&D DEPARTMENT.	
REV_A	REV_A_REMARKS	RDATEA	LOTUS WWW.LOTUSDOORS.COM.AU ABN 61 007 087 523	
REV_B	REV_B_REMARKS	RDATEB		
REV_C	REV_C_REMARKS	RDATEC		
REV_D	REV_D_REMARKS	RDATED		
PRODUCT: 80-GLASS_SLIDERS			DRAWING NUMBER: GSL-080-0002	SEQUENCE: 2
				REV 0



TITLE: FACE-MOUNTED-ACOUSTIC-TRACK-AND-TOP-RAIL

REV	REVISION DETAILS	DATE	<small>© COPYRIGHT LOTUS FOLDING WALLS & DOORS PTY LTD.</small> REPRODUCTION PROHIBITED WITHOUT PERMISSION. CHANGES TO THE DESIGN AND OR DETAILS OF THIS DRAWING MUST NOT BE MADE WITHOUT PERMISSION OF THE DESIGN DEPARTMENT. DO NOT SCALE FROM THIS DRAWING. CHECK ALL DIMENSIONS WITH THE D&D DEPARTMENT. LOTUS <small>WWW.LOTUSDOORS.COM.AU</small> <small>ABN 61 007 087 523</small>
REV_A	REV_A_REMARKS	RDATEA	
REV_B	REV_B_REMARKS	RDATEB	
REV_C	REV_C_REMARKS	RDATEC	
REV_D	REV_D_REMARKS	RDATED	
PRODUCT: 80-SERIES-GLASS-SLIDER			DRAWING NUMBER: GSL-080-0003
			SEQUENCE: 3
			REV 0



TITLE: CAVITY_SLIDER_TRACK_AND_TOP_RAIL

REV	REVISION DETAILS	DATE
REV_A	REV_A_REMARKS	RDATEA
REV_B	REV_B_REMARKS	RDATEB
REV_C	REV_C_REMARKS	RDATEC
REV_D	REV_D_REMARKS	RDATED

PRODUCT:
80-GLASS_SLIDERS

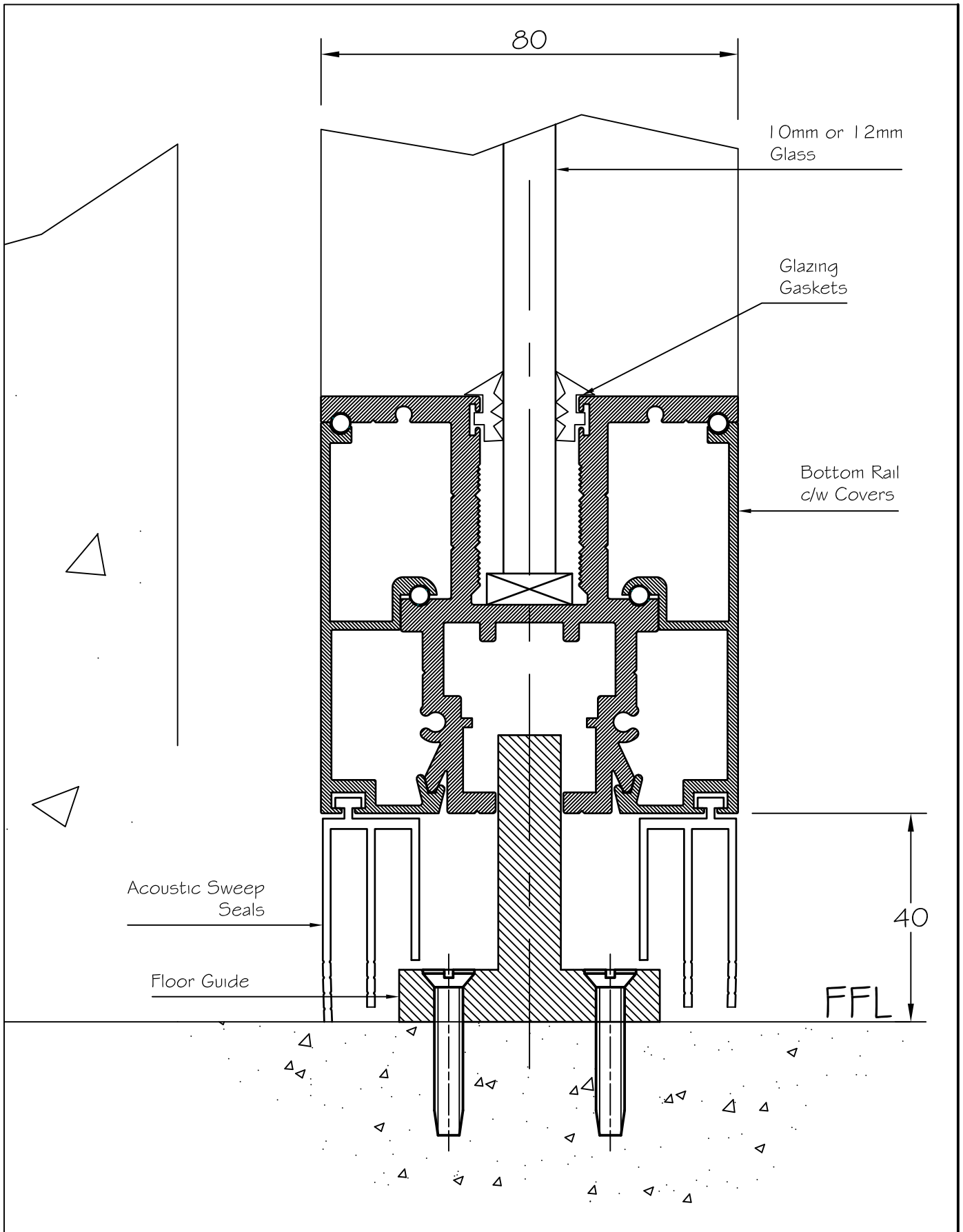
© COPYRIGHT LOTUS FOLDING WALLS & DOORS PTY LTD.
REPRODUCTION PROHIBITED WITHOUT PERMISSION.
CHANGES TO THE DESIGN AND OR DETAILS OF THIS
DRAWING MUST NOT BE MADE WITHOUT PERMISSION OF
THE D&D MANAGER. DO NOT SCALE FROM THIS DRAWING.
CHECK ALL DIMENSIONS WITH THE D&D DEPARTMENT.
WWW.LOTUSDOORS.COM.AU
ABN 61 007 087 523

LOTUS


DRAWING NUMBER:
GLS-080-0004

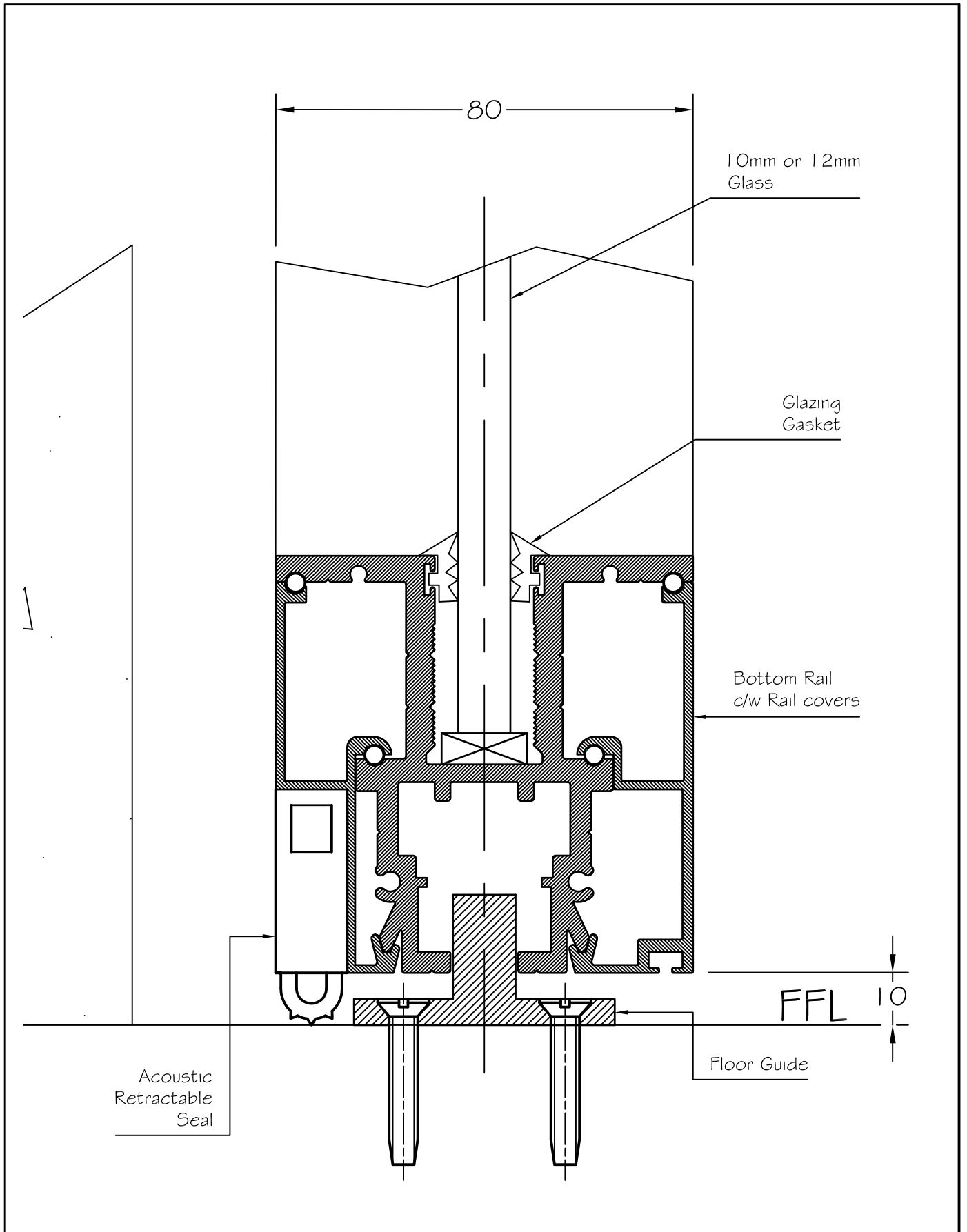
SEQUENCE:
4

REV
0




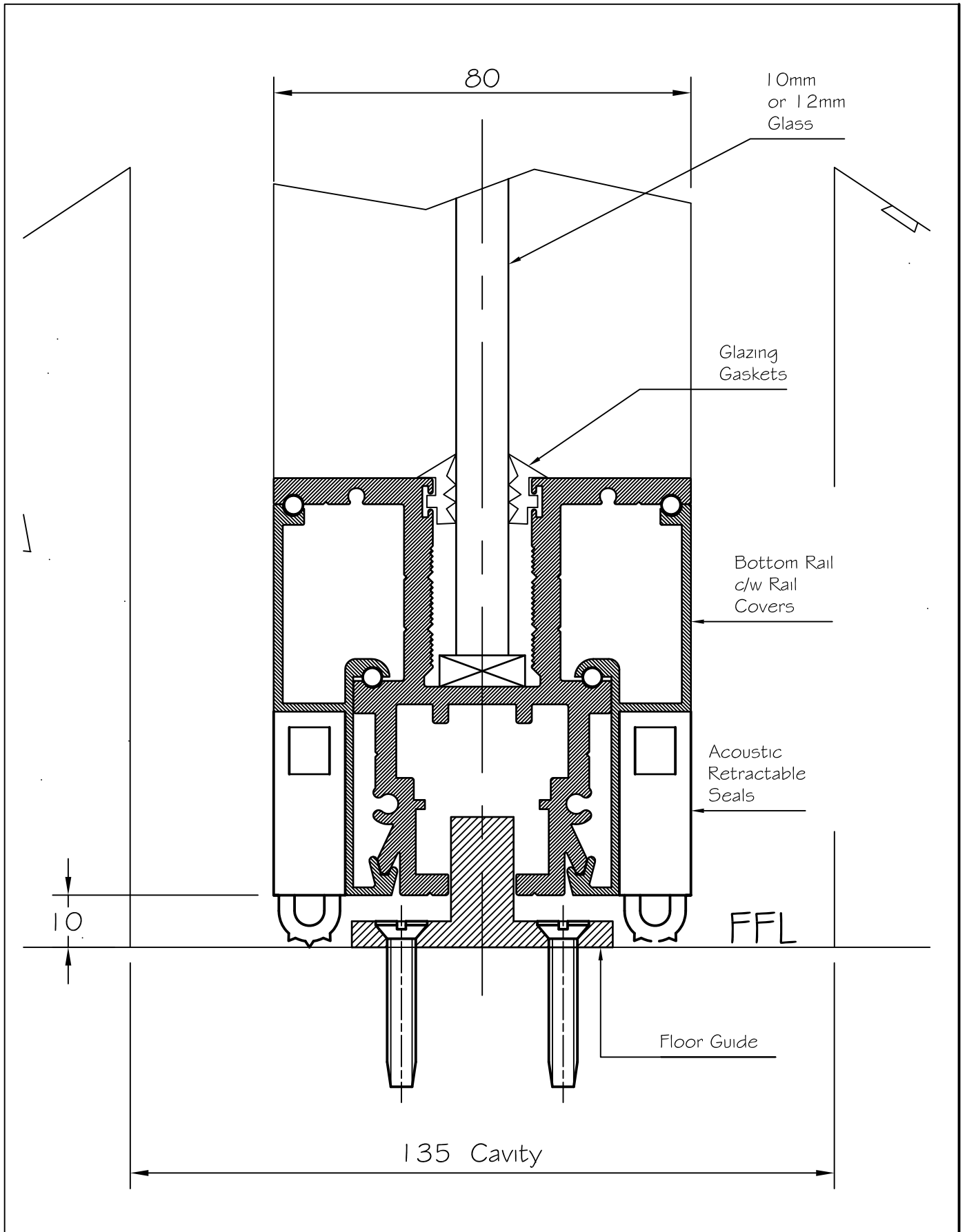
TITLE: TYPE_1_SEAL_DETAIL_AND-BOTTOM_RAIL

REV	REVISION DETAILS	DATE	<small>© COPYRIGHT LOTUS FOLDING WALLS & DOORS PTY LTD.</small> REPRODUCTION PROHIBITED WITHOUT PERMISSION. CHANGES TO THE DESIGN AND OR DETAILS OF THIS DRAWING MUST NOT BE MADE WITHOUT PERMISSION OF THE D&D MANAGER. DO NOT SCALE FROM THIS DRAWING. CHECK ALL DIMENSIONS WITH THE D&D DEPARTMENT. WWW.LOTUSDOORS.COM.AU ABN 61 007 087 523		
REV_A	REV_A_REMARKS	RDATEA			
REV_B	REV_B_REMARKS	RDATEB			
REV_C	REV_C_REMARKS	RDATEC			
REV_D	REV_D_REMARKS	RDATED			
PRODUCT: 80_GLASS_SLIDERS			DRAWING NUMBER: GSL-080-0005	SEQUENCE: 5	REV 0




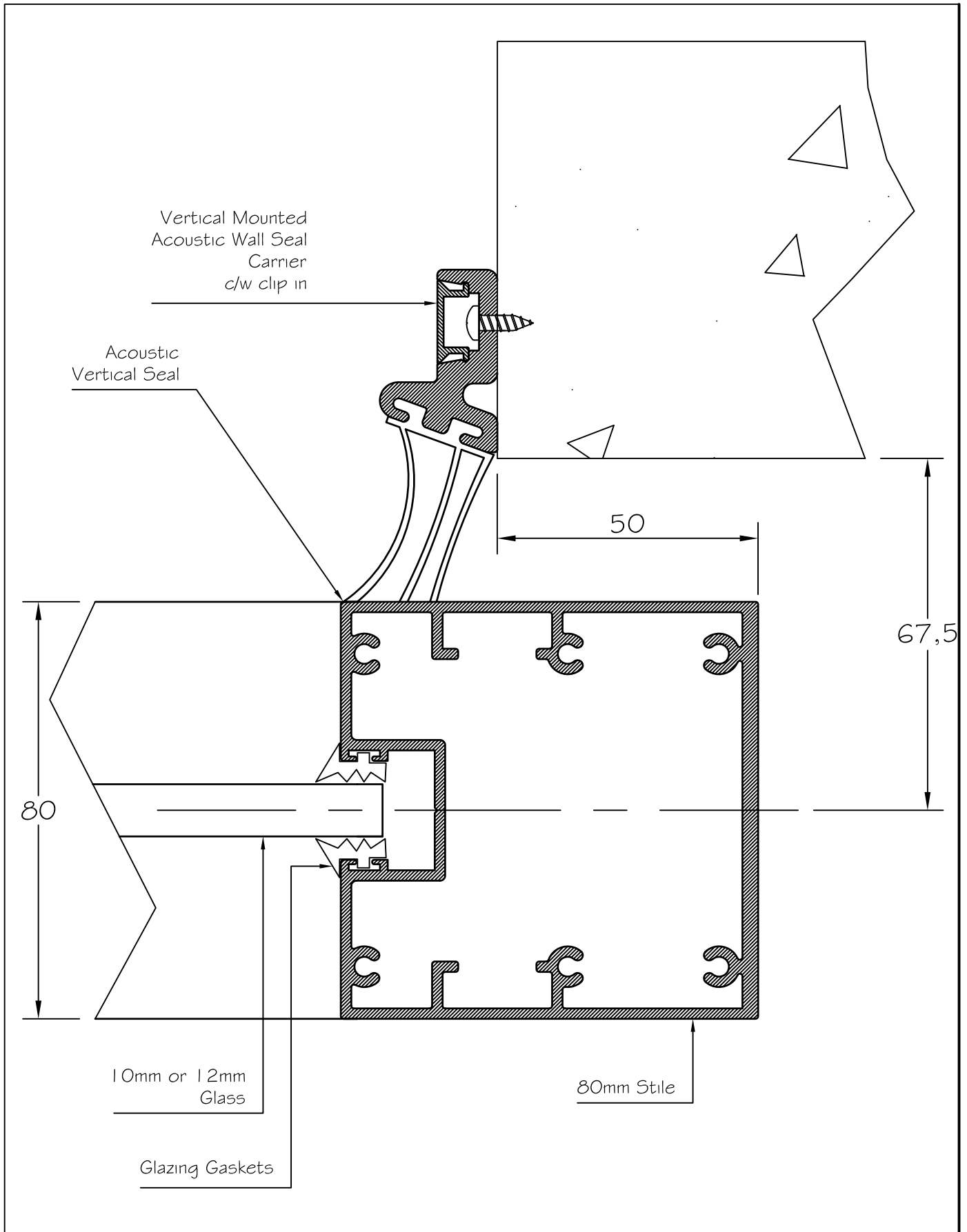
TITLE: TYPE_2_SEAL_DETAIL_AND_BOTTOM_RAIL

REV	REVISION DETAILS	DATE	<small>© COPYRIGHT LOTUS FOLDING WALLS & DOORS PTY LTD.</small> REPRODUCTION PROHIBITED WITHOUT PERMISSION. CHANGES TO THE DESIGN AND OR DETAILS OF THIS DRAWING MUST NOT BE MADE WITHOUT PERMISSION OF THE D&D MANAGER. DO NOT SCALE FROM THIS DRAWING. CHECK ALL DIMENSIONS WITH THE D&D DEPARTMENT. WWW.LOTUSDOORS.COM.AU ABN 61 007 087 523	
REV_A	REV_A_REMARKS	RDATEA		
REV_B	REV_B_REMARKS	RDATEB		
REV_C	REV_C_REMARKS	RDATEC		
REV_D	REV_D_REMARKS	RDATED		
PRODUCT: 80_GLASS_SLIDERS			DRAWING NUMBER: GSL_080_0006	SEQUENCE: 6
				REV 0




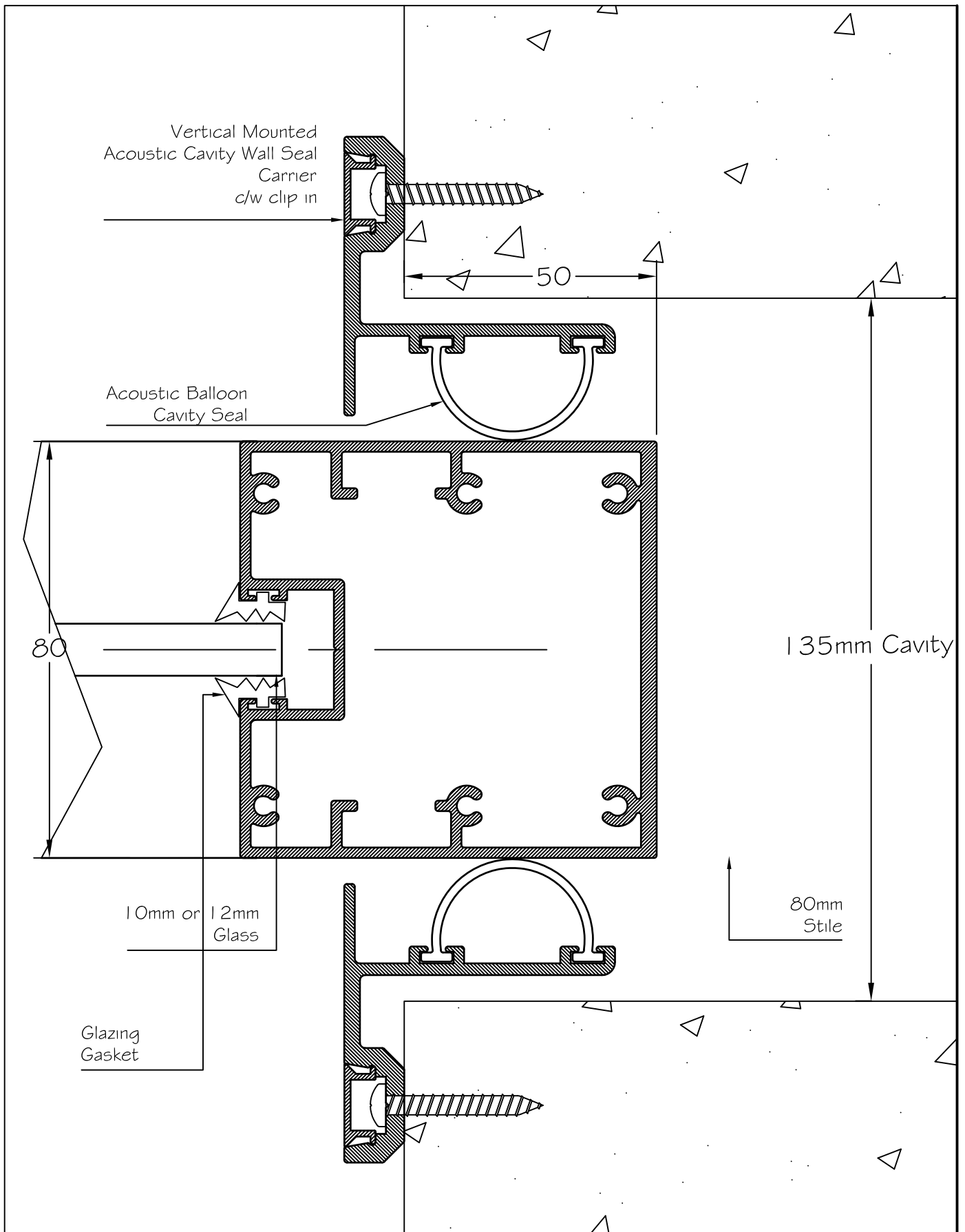
TITLE: TYPE_4_SEAL_DETAIL_AND_BOTTOM_RAIL-FOR-CAVITY-SLIDER-ONLY

REV	REVISION DETAILS	DATE	<small>© COPYRIGHT LOTUS FOLDING WALLS & DOORS PTY LTD.</small> REPRODUCTION PROHIBITED WITHOUT PERMISSION. CHANGES TO THE DESIGN AND OR DETAILS OF THIS DRAWING MUST NOT BE MADE WITHOUT PERMISSION OF THE DSD MANAGER. DO NOT SCALE FROM THIS DRAWING. CHECK ALL DIMENSIONS WITH THE DSD DEPARTMENT. WWW.LOTUSDOORS.COM.AU ABN 61 007 087 523	
REV_A	REV_A_REMARKS	RDATEA		
REV_B	REV_B_REMARKS	RDATEB		
REV_C	REV_C_REMARKS	RDATEC		
REV_D	REV_D_REMARKS	RDATED		
PRODUCT: 80_GLASS_SLIDERS			DRAWING NUMBER: GSL_080_0007	SEQUENCE: 7
				REV 0




TITLE:
WALL_MOUNTED_VERTICAL_SEAL_DETAIL

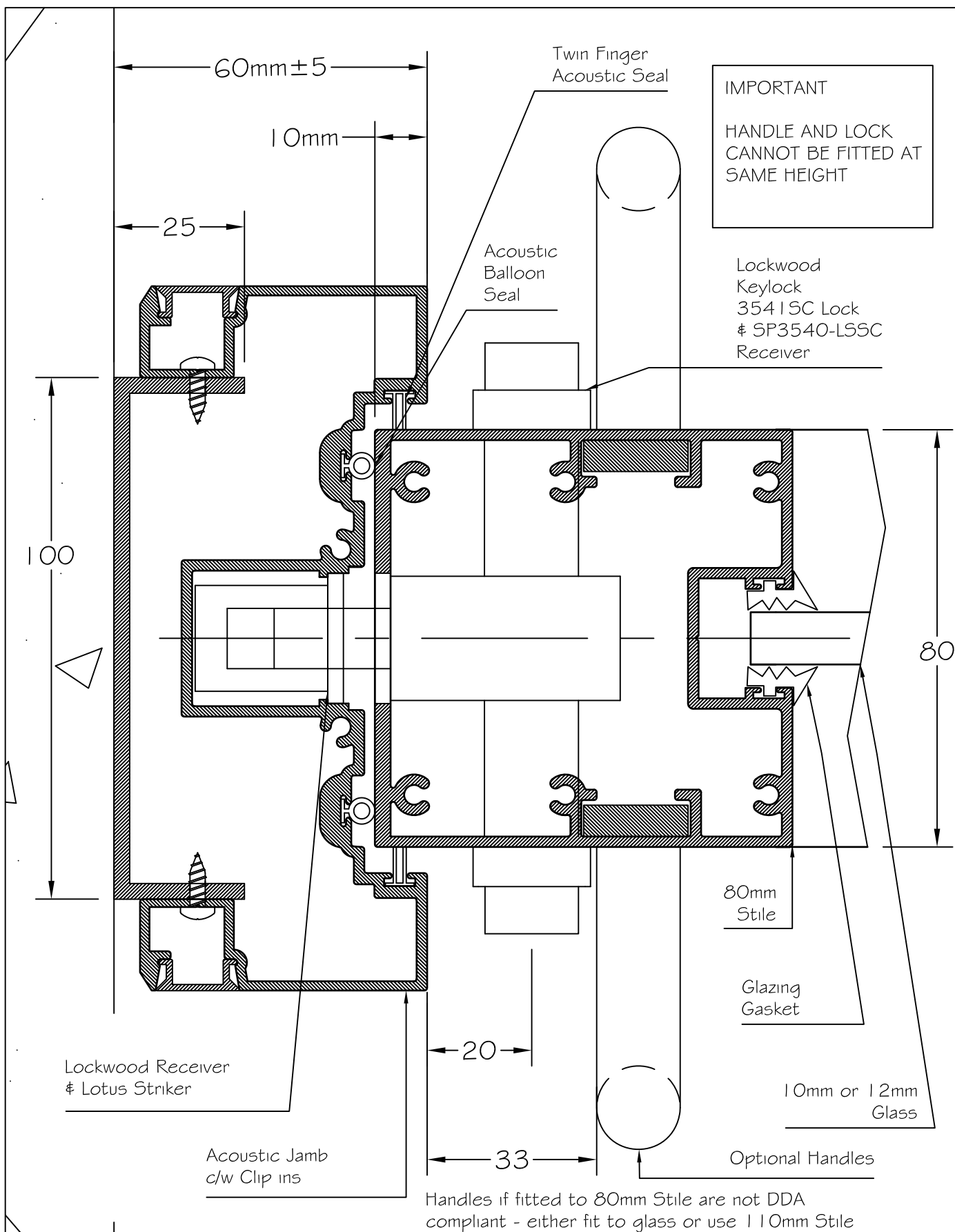
REV	REVISION DETAILS	DATE	<small>© COPYRIGHT LOTUS FOLDING WALLS & DOORS PTY LTD.</small> REPRODUCTION PROHIBITED WITHOUT PERMISSION. CHANGES TO THE DESIGN AND OR DETAILS OF THIS DRAWING MUST NOT BE MADE WITHOUT PERMISSION OF THE D&D MANAGER. DO NOT SCALE FROM THIS DRAWING. CHECK ALL DIMENSIONS WITH THE D&D DEPARTMENT. WWW.LOTUSDOORS.COM.AU ABN 61 007 087 523	
REV_A	REV_A_REMARKS	RDATEA		
REV_B	REV_B_REMARKS	RDATEB		
REV_C	REV_C_REMARKS	RDATEC		
REV_D	REV_D_REMARKS	RDATED		
PRODUCT: 80_GLASS_SLIDERS			DRAWING NUMBER: GSL-080-0008	SEQUENCE: 8
				REV 1



TITLE:
CAVITY-WALL-VERTICAL-BALLOON-SEAL

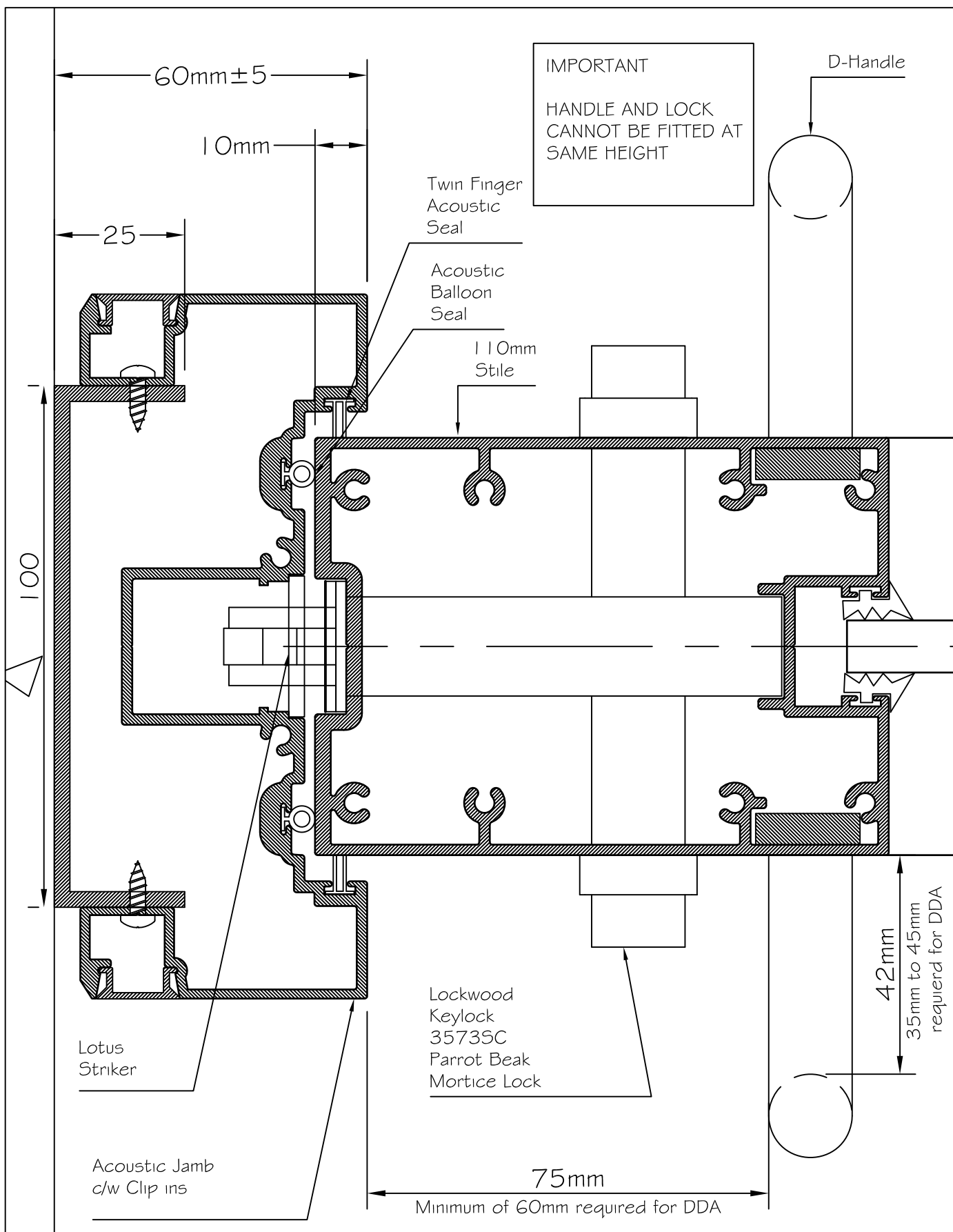
REV	REVISION DETAILS	DATE	© COPYRIGHT LOTUS FOLDING WALLS & DOORS PTY LTD. REPRODUCTION PROHIBITED WITHOUT PERMISSION. CHANGES TO THE DESIGN AND OR DETAILS OF THIS DRAWING MUST NOT BE MADE WITHOUT PERMISSION OF THE D&D MANAGER. DO NOT SCALE FROM THIS DRAWING. CHECK ALL DIMENSIONS WITH THE D&D DEPARTMENT.		
REV_A	REV_A_REMARKS	RDATEA	WWW.LOTUSDOORS.COM.AU ABN 61 007 087 523		
REV_B	REV_B_REMARKS	RDATEB			
REV_C	REV_C_REMARKS	RDATEC			
REV_D	REV_D_REMARKS	RDATED			
PRODUCT: 80_GLASS_SLIDERS			DRAWING NUMBER: GSL-080-0009	SEQUENCE: 9	REV 1

WWW.LOTUSDOORS.COM.AU
ABN 61 007 087 523



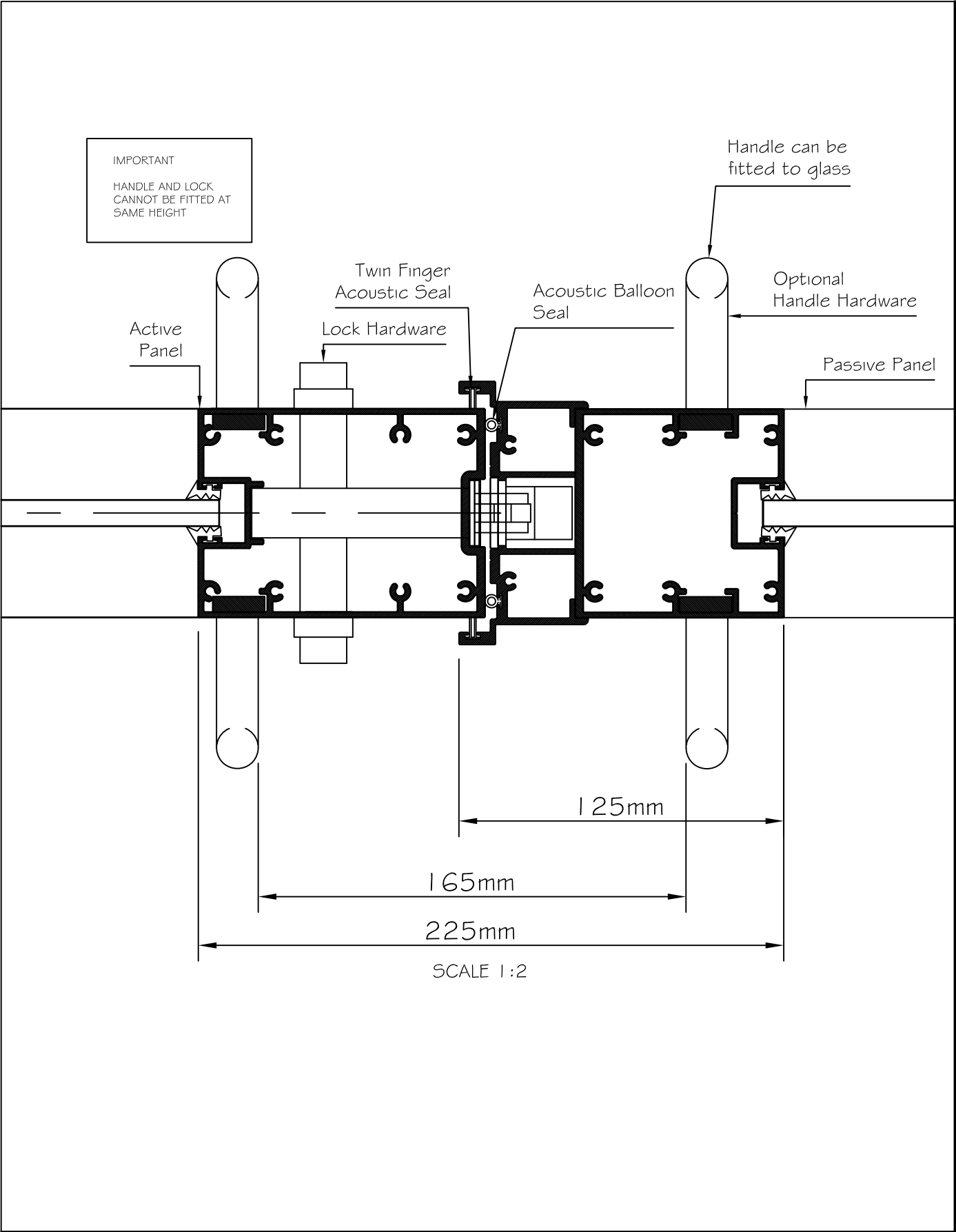
TITLE:
ACOUSTIC_JAMB_WITH_80MM_STILE_AND_30MM_BACKSET_MORTICE_LOCK

REV	REVISION DETAILS	DATE	<small>© COPYRIGHT LOTUS FOLDING WALLS & DOORS PTY LTD. REPRODUCTION PROHIBITED WITHOUT PERMISSION. CHANGES TO THE DESIGN AND OR DETAILS OF THIS DRAWING MUST NOT BE MADE WITHOUT PERMISSION OF THE D&D MANAGER. DO NOT SCALE FROM THIS DRAWING. CHECK ALL DIMENSIONS WITH THE D&D DEPARTMENT.</small> LOTUS <small>WWW.LOTUSDOORS.COM.AU ABN 61 007 087 523</small>	SEQUENCE: 10	REV 1
1	HANDLE-&LOCK-HEIGHT	28-05-14			
REV_B	REV_B_REMARKS	RDATEB			
REV_C	REV_C_REMARKS	RDATEC			
REV_D	REV_D_REMARKS	RDATED			
PRODUCT: 80_GLASS_SLIDERS			DRAWING NUMBER: GSL-080-0010		



TITLE:
ACOUSTIC_JAMB_WITH_110MM_STILE_AND_60MM_BACKSET_MORTICE_LOCK

REV	REVISION DETAILS	DATE	<small>© COPYRIGHT LOTUS FOLDING WALLS & DOORS PTY LTD. REPRODUCTION PROHIBITED WITHOUT PERMISSION. CHANGES TO THE DESIGN AND OR DETAILS OF THIS DRAWING MUST NOT BE MADE WITHOUT PERMISSION OF THE DSD MANAGER. DO NOT SCALE FROM THIS DRAWING. CHECK ALL DIMENSIONS WITH THE DSD DEPARTMENT.</small> LOTUS <small>WWW.LOTUSDOORS.COM.AU ABN 61 007 087 523</small>
1	LOCK-&-HANDLE-HEIGHT	28-05-14	
REV_B	REV_B_REMARKS	RDATEB	
REV_C	REV_C_REMARKS	RDATEC	
REV_D	REV_D_REMARKS	RDATED	
PRODUCT: 80_GLASS_SLIDERS			DRAWING NUMBER: GSL-080-0011
			SEQUENCE: 11
			REV 1



TITLE:
BI-PARTING_STILE

REV	REVISION DETAILS	DATE
1	REPLACE-80-STILE-WITH-110	RDATEA
REV_B	REV_B_REMARKS	RDATEB
REV_C	REV_C_REMARKS	RDATEC
REV_D	REV_D_REMARKS	RDATED

PRODUCT:
80_GLASS_SLIDERS

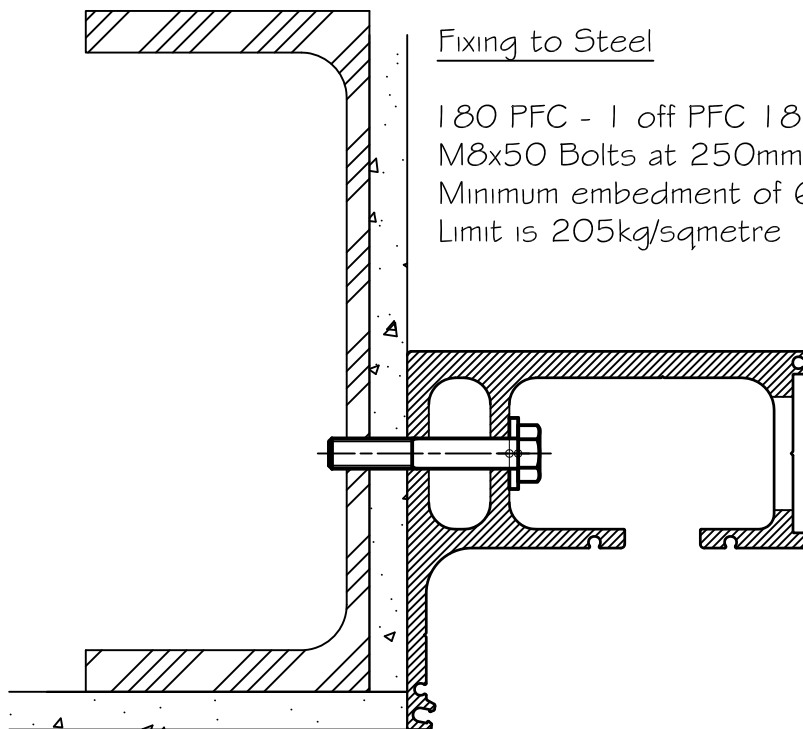
© COPYRIGHT LOTUS FOLDING WALLS & DOORS PTY LTD.
REPRODUCTION PROHIBITED WITHOUT PERMISSION.
CHANGES TO THE DESIGN AND OR DETAILS OF THIS
DRAWING MUST NOT BE MADE WITHOUT PERMISSION OF
THE D&D MANAGER. DO NOT SCALE FROM THIS DRAWING.
CHECK ALL DIMENSIONS WITH THE D&D DEPARTMENT.
WWW.LOTUSDOORS.COM.AU
ABN 61 007 087 523



DRAWING NUMBER:
GSL-080-0012

SEQUENCE:
12

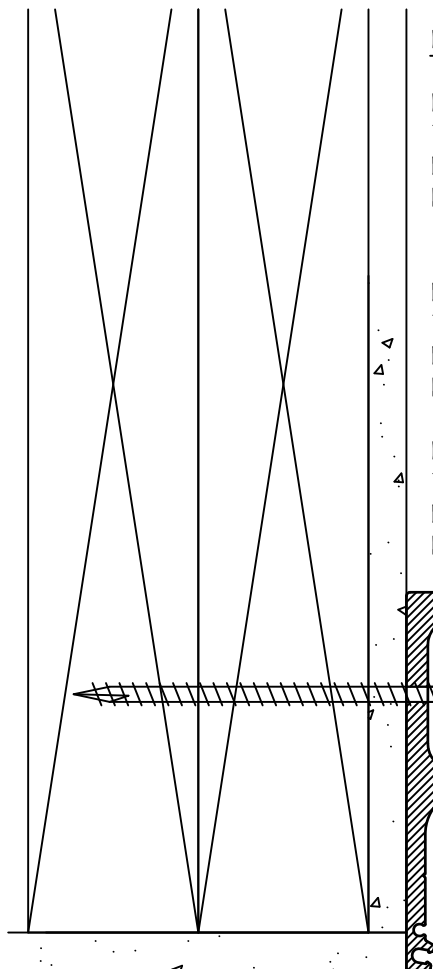
REV
1



Fixing to Steel

I 80 PFC - 1 off PFC I 80x75
M8x50 Bolts at 250mm centres.
Minimum embedment of 6mm
Limit is 205kg/sqmetre

SCALE 1:2



Fixing to Timber

F17 KDHW - 2 off 290x45
Type 17 No 14 gauge Tek screws at 250mm centres.
Minimum embedment of 60mm
Limit is 95kg/sqmetre

MGP10 - 2 off 290x45
Type 17 No 14 gauge Tek screws at 250mm centres.
Minimum embedment of 60mm
Limit is 70kg/sqmetre

F5 Pine - 2 off 290x45
Type 17 No 14 gauge Tek screws at 250mm centres
Minimum embedment of 60mm
Limit is 52kg/sqmetre

SCALE 1:2

TITLE: FACE_FIXED_ACOUSTIC_TRACK_FIXING

REV	REVISION DETAILS	DATE
REV_A	REV_A_REMARKS	RDATEA
REV_B	REV_B_REMARKS	RDATEB
REV_C	REV_C_REMARKS	RDATEC
REV_D	REV_D_REMARKS	RDATED

PRODUCT:
80_GLASS_SLIDERS

© COPYRIGHT LOTUS FOLDING WALLS & DOORS PTY LTD.
REPRODUCTION PROHIBITED WITHOUT PERMISSION.
CHANGES TO THE DESIGN AND OR DETAILS OF THIS
DRAWING MUST NOT BE MADE WITHOUT PERMISSION OF
THE D&D MANAGER. DO NOT SCALE FROM THIS DRAWING.
CHECK ALL DIMENSIONS WITH THE D&D DEPARTMENT.

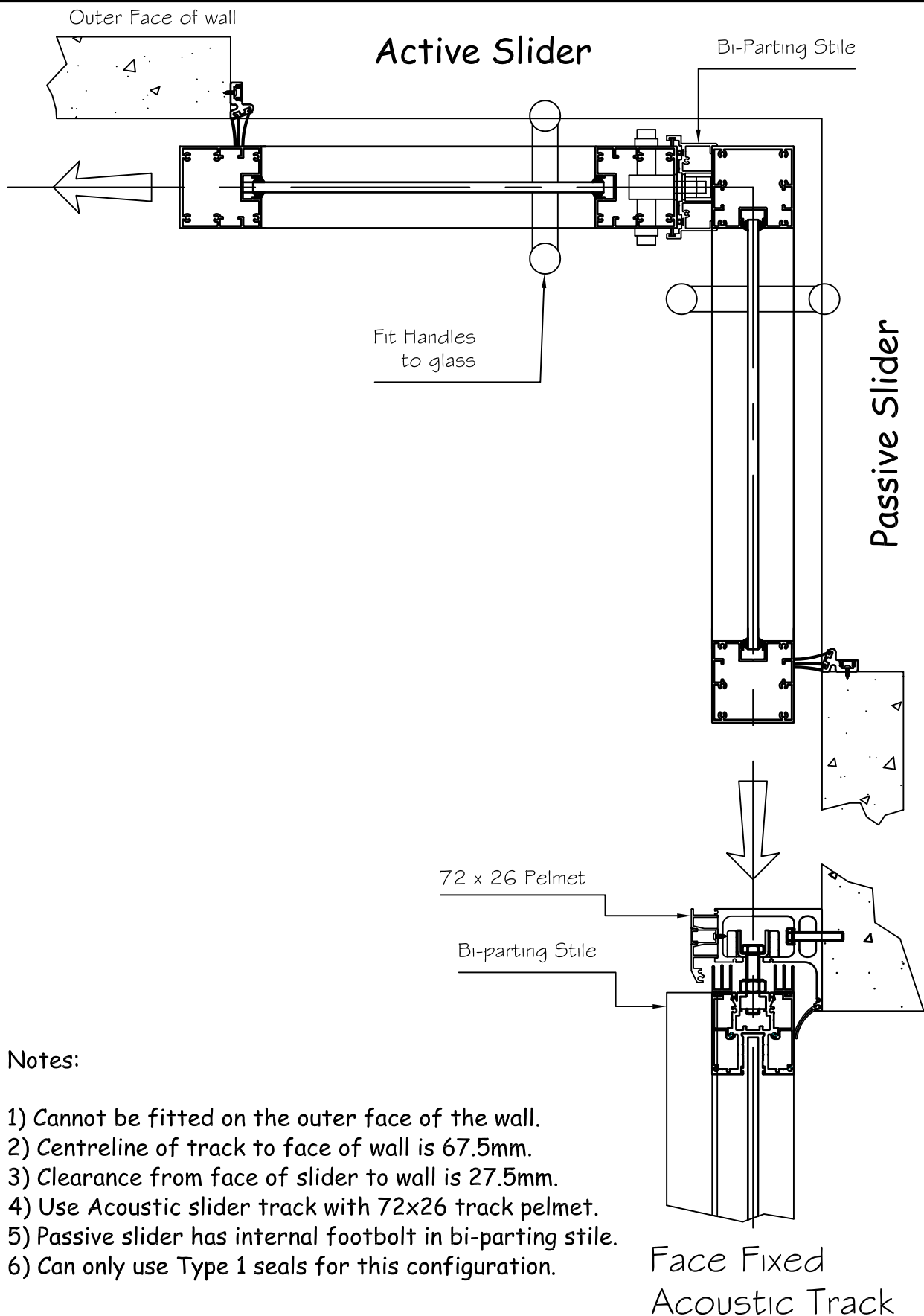
WWW.LOTUSDOORS.COM.AU
ABN 61 007 087 523

DRAWING NUMBER:
GSL-080-0013

SEQUENCE:
13

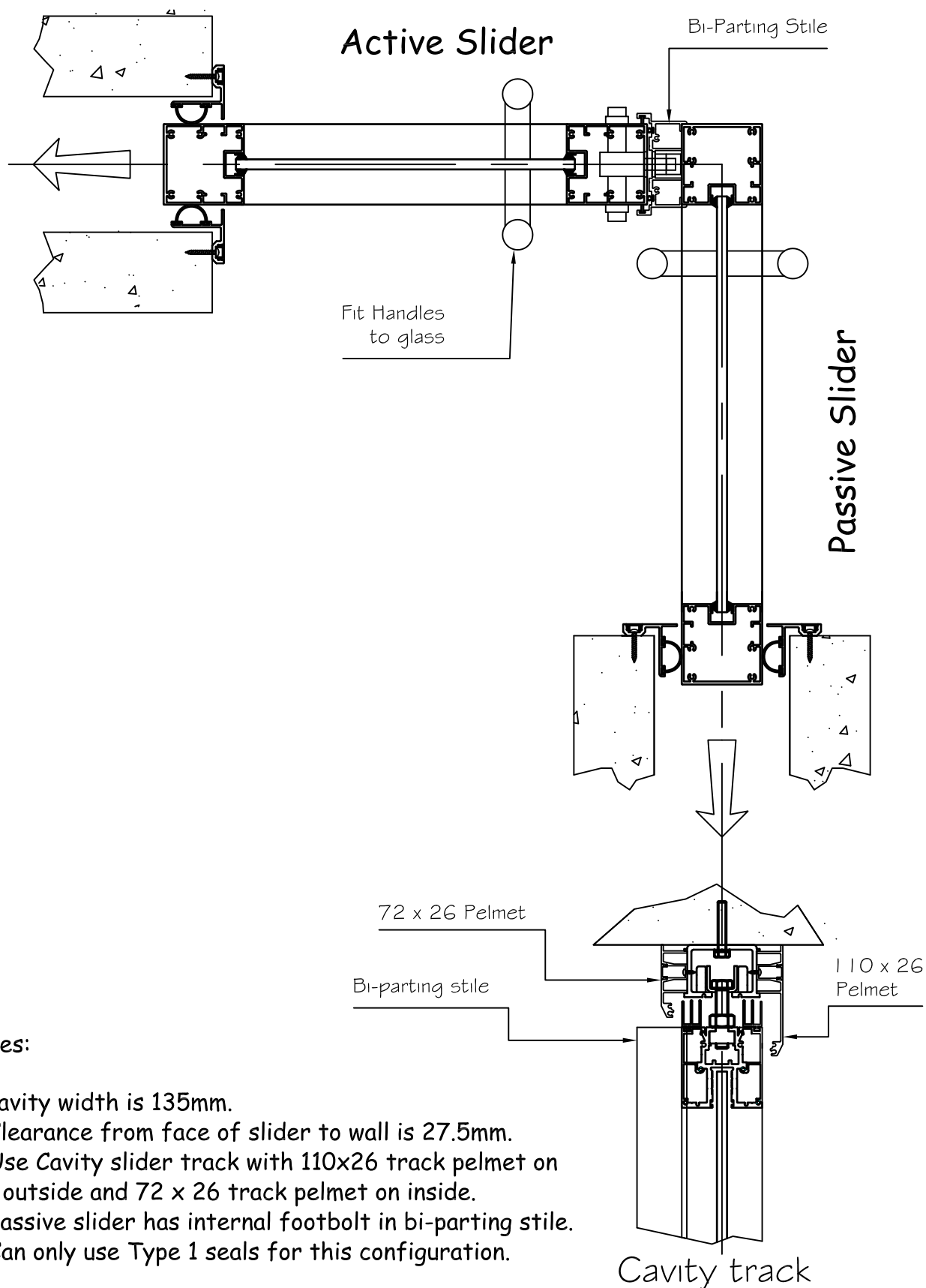
REV
0

LOTUS



TITLE: BI-PARTING_JUNCTION_(90_DEGREE_FACE_FIXED)

REV	REVISION DETAILS	DATE	<div>© COPYRIGHT LOTUS FOLDING WALLS & DOORS PTY LTD.</div> <div>REPRODUCTION PROHIBITED WITHOUT PERMISSION. CHANGES TO THE DESIGN AND OR DETAILS OF THIS DRAWING MUST NOT BE MADE WITHOUT PERMISSION OF THE D&D MANAGER. DO NOT SCALE FROM THIS DRAWING. CHECK ALL DIMENSIONS WITH THE D&D DEPARTMENT.</div> <div>WWW.LOTUSDOORS.COM.AU ABN 61 007 087 523</div> <div>LOTUS</div>		
REV_A	REV_A_REMARKS	RDATEA			
REV_B	REV_B_REMARKS	RDATEB			
REV_C	REV_C_REMARKS	RDATEC			
REV_D	REV_D_REMARKS	RDATED			
PRODUCT: 80_GLASS_SLIDERS			DRAWING NUMBER: GSL-080-0014	SEQUENCE: 14	REV 1



Notes:

- 1) Cavity width is 135mm.
- 2) Clearance from face of slider to wall is 27.5mm.
- 3) Use Cavity slider track with 110x26 track pelmet on the outside and 72 x 26 track pelmet on inside.
- 4) Passive slider has internal footbolt in bi-parting stile.
- 5) Can only use Type 1 seals for this configuration.

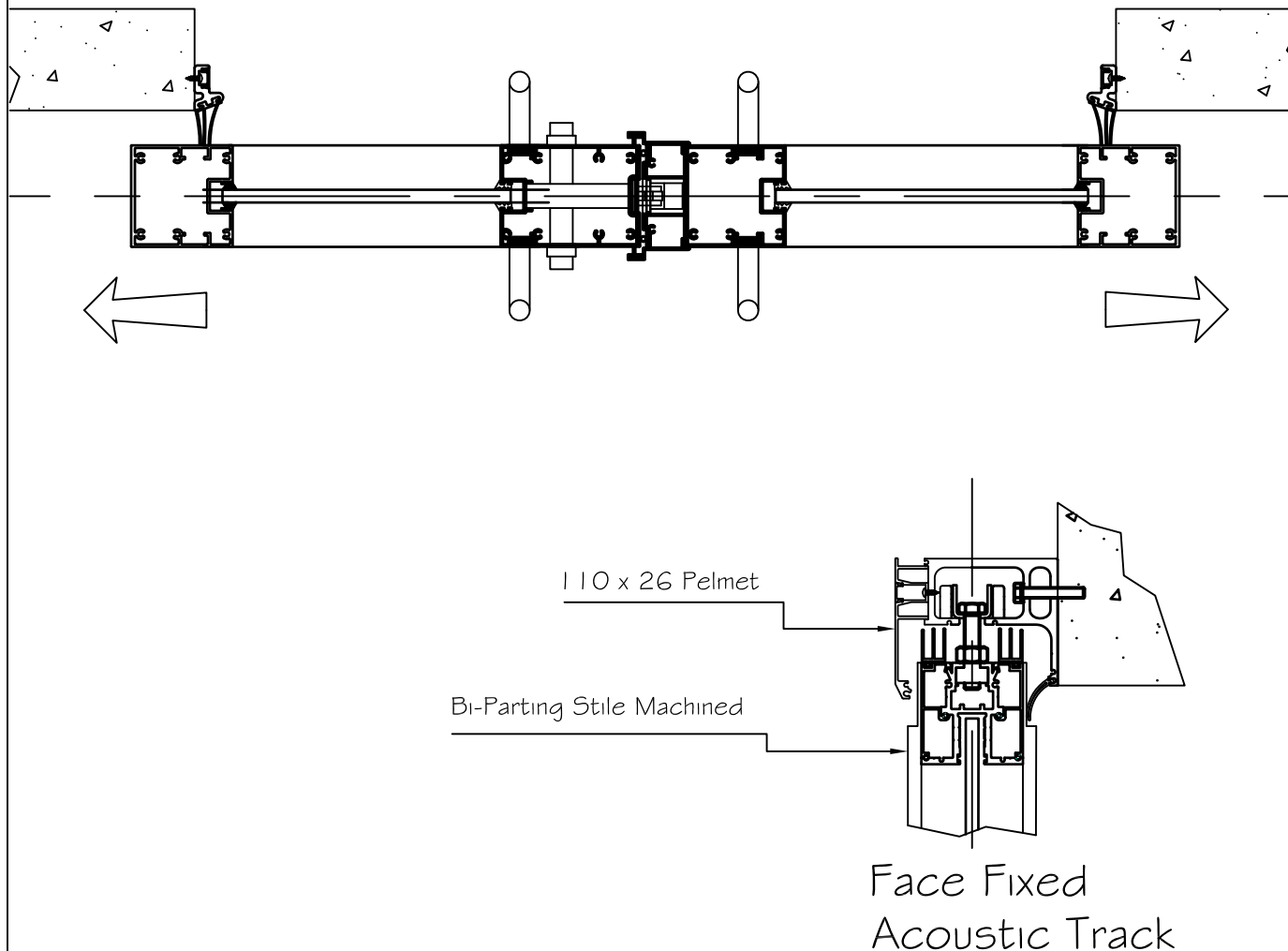
TITLE:

BI_PARTING_JUNCTION_(90_DEGREE_INTERNAL_CAVITY)

REV	REVISION DETAILS	DATE	<small>© COPYRIGHT LOTUS FOLDING WALLS & DOORS PTY LTD. REPRODUCTION PROHIBITED WITHOUT PERMISSION. CHANGES TO THE DESIGN AND OR DETAILS OF THIS DRAWING MUST NOT BE MADE WITHOUT PERMISSION OF THE D&D MANAGER. DO NOT SCALE FROM THIS DRAWING. CHECK ALL DIMENSIONS WITH THE D&D DEPARTMENT.</small>	
REV_A	REV_A_REMARKS	RDATEA	LOTUS <small>WWW.LOTUSDOORS.COM.AU ABN 61 007 087 523</small>	
REV_B	REV_B_REMARKS	RDATEB		
REV_C	REV_C_REMARKS	RDATEC		
REV_D	REV_D_REMARKS	RDATED		
PRODUCT:			DRAWING NUMBER:	SEQUENCE:
80_GLASS_SLIDERS			GSL-080-0015	15
				REV
				1

Active Slider

Passive Slider



Notes:

- 1) Centreline of track to face of wall is 67.5mm.
- 2) Clearance from face of slider to wall is 27.5mm.
- 3) Use Acoustic slider track with 72x26 track pelmet.
- 4) Passive slider has internal footbolt in bi-parting stile.
- 5) Can use Type 1 & Type 2 seals for this configuration.
- 6) Machine both sides of b-parting stile to clear front pelmet and track seal.
- 7) Use acoustic slider track with 110 x 26 slider track pelmet.

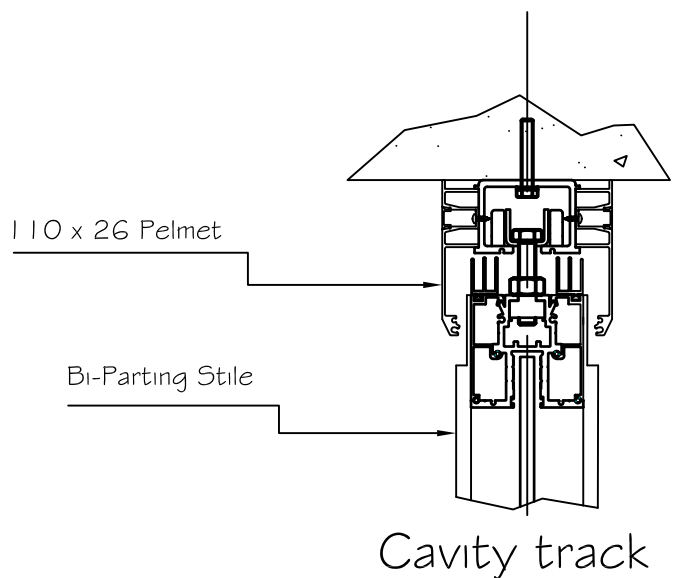
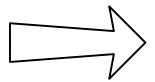
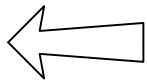
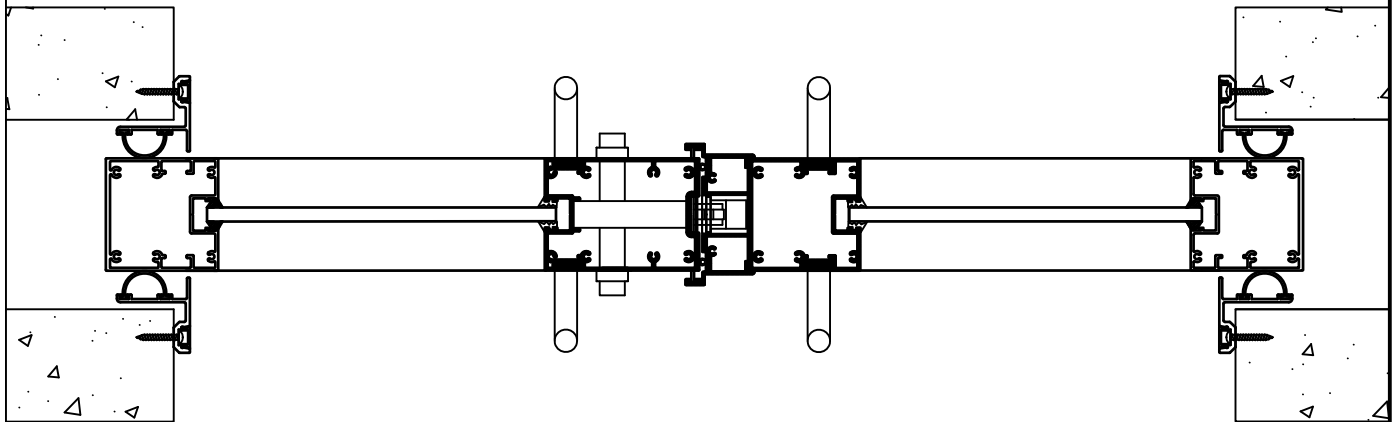
TITLE:

BI-PARTING_(FACE-FIXED)

REV	REVISION DETAILS	DATE	<small>© COPYRIGHT LOTUS FOLDING WALLS & DOORS PTY LTD. REPRODUCTION PROHIBITED WITHOUT PERMISSION. CHANGES TO THE DESIGN AND/OR DETAILS OF THIS DRAWING MUST NOT BE MADE WITHOUT PERMISSION OF THE D&D MANAGER. DO NOT SCALE FROM THIS DRAWING. CHECK ALL DIMENSIONS WITH THE D&D DEPARTMENT.</small> LOTUS <small>WWW.LOTUSDOORS.COM.AU ABN 61 007 087 523</small>
1	UPDATED	28-05-2014	
2	80MM-STILE-TO-110MM-STILE	28-05-2014	
REV_C	REV_C_REMARKS	RDATEC	
REV_D	REV_D_REMARKS	RDATED	
PRODUCT: 80_GLASS_SLIDERS			DRAWING NUMBER: GSL-080-0016
			SEQUENCE: 16
			REV 2

Active Slider

Passive Slider



Notes:

- 1) Cavity width is 135mm.
- 2) Clearance from face of slider to wall is 27.5mm.
- 3) Use Cavity slider track with 110x26 track pelmet on the outside and 72 x 26 track pelmet on inside.
- 4) Passive slider has internal footbolt in bi-parting stile.
- 5) Can use Type 1, 2 & 4 Seals on this configuration.

TITLE:

BI_PARTING_JUNCTION_CAVITY-FIXED

REV	REVISION DETAILS	DATE	© COPYRIGHT LOTUS FOLDING WALLS & DOORS PTY LTD. REPRODUCTION PROHIBITED WITHOUT PERMISSION. CHANGES TO THE DESIGN AND/OR DETAILS OF THIS DRAWING MUST NOT BE MADE WITHOUT PERMISSION OF THE D&D MANAGER. DO NOT SCALE FROM THIS DRAWING. CHECK ALL DIMENSIONS WITH THE D&D DEPARTMENT.
1	UPDATED	28-05-14	LOTUS WWW.LOTUSDOORS.COM.AU ABN 61 007 087 523
2	80MM-STILE-TO-110MM-STILE	28-05-14	
REV_C	REV_C_REMARKS	RDATEC	
REV_D	REV_D_REMARKS	RDATED	

PRODUCT:

80_GLASS_SLIDERS

DRAWING NUMBER:

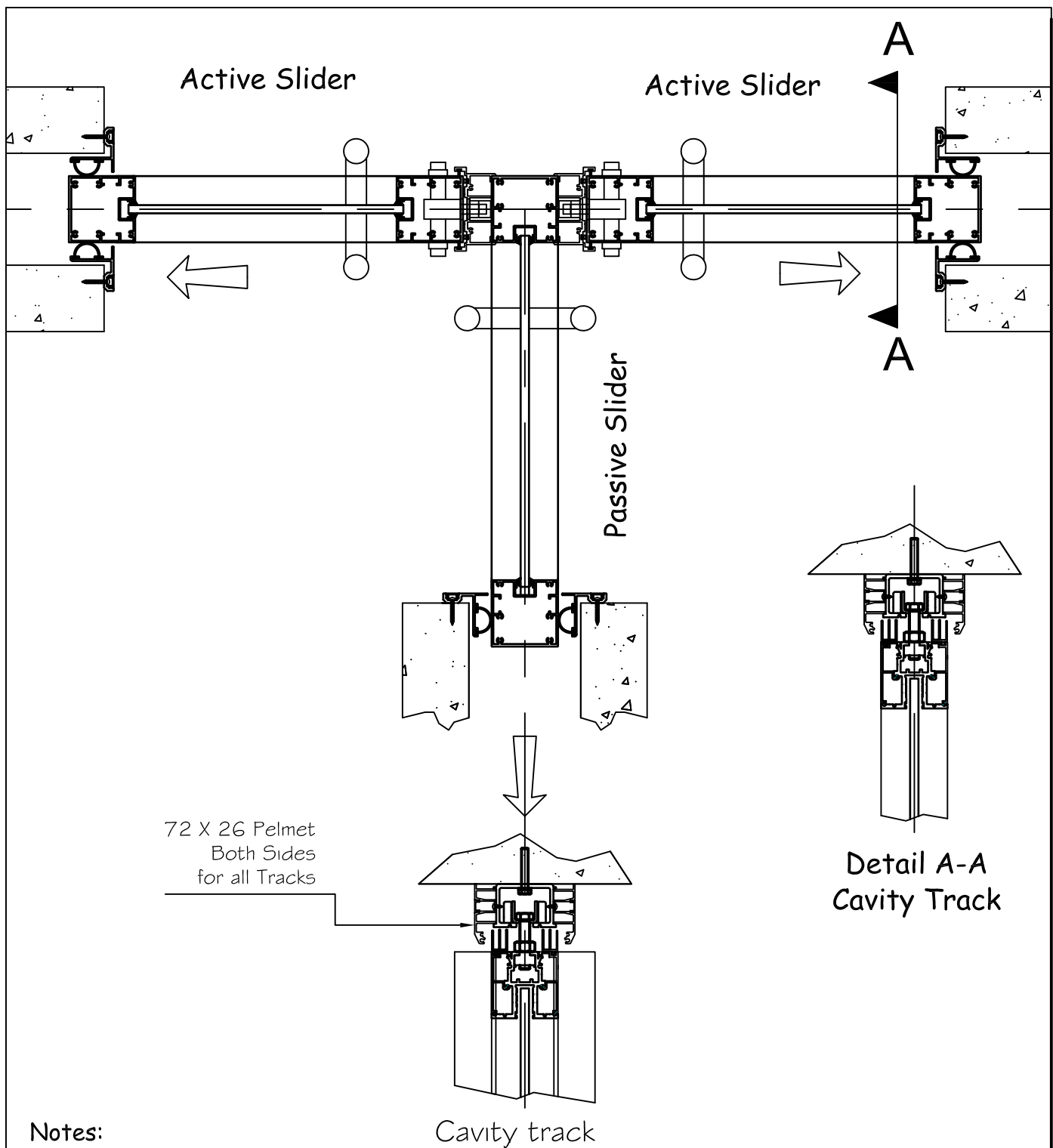
GSL-080-0017

SEQUENCE:

17

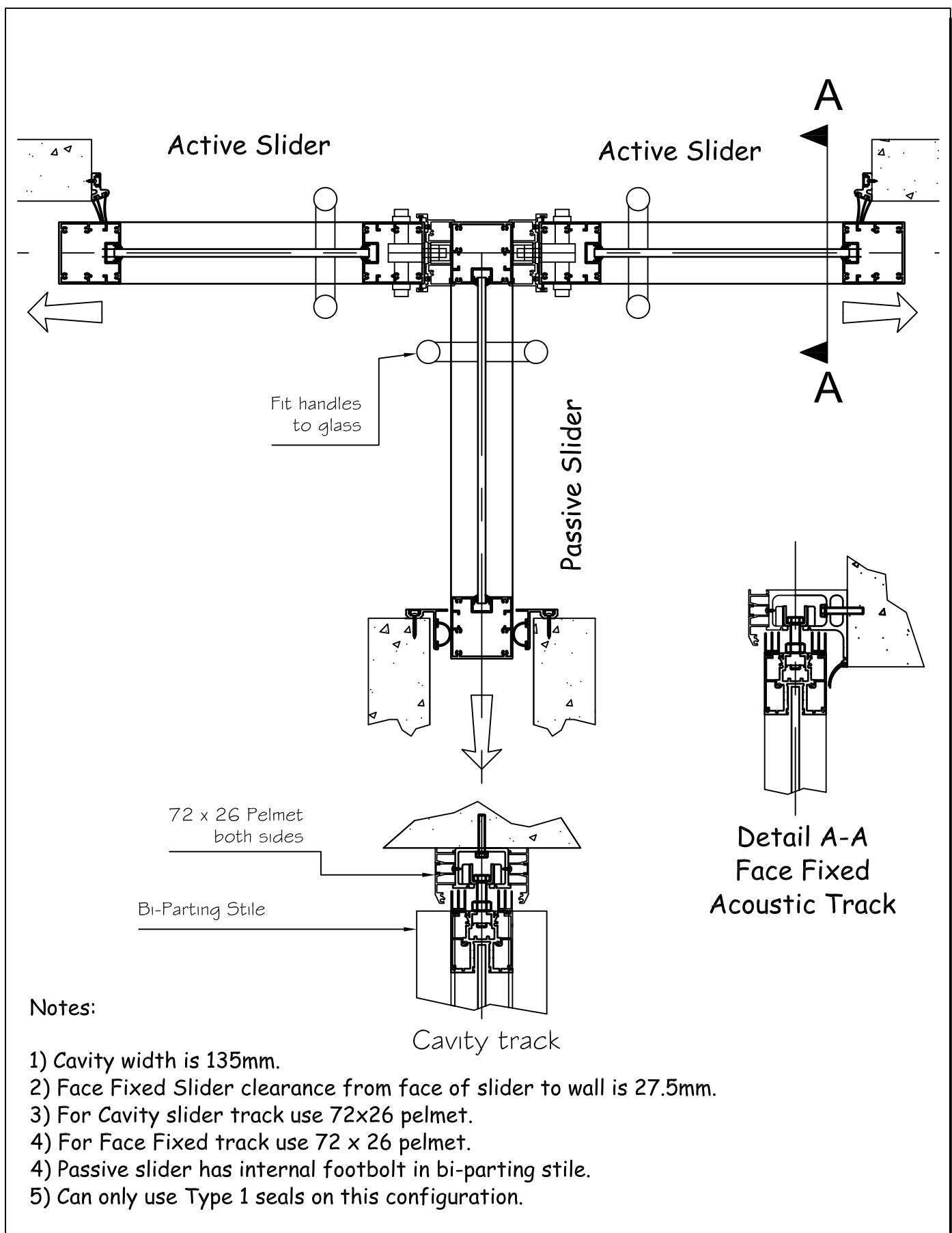
REV

2



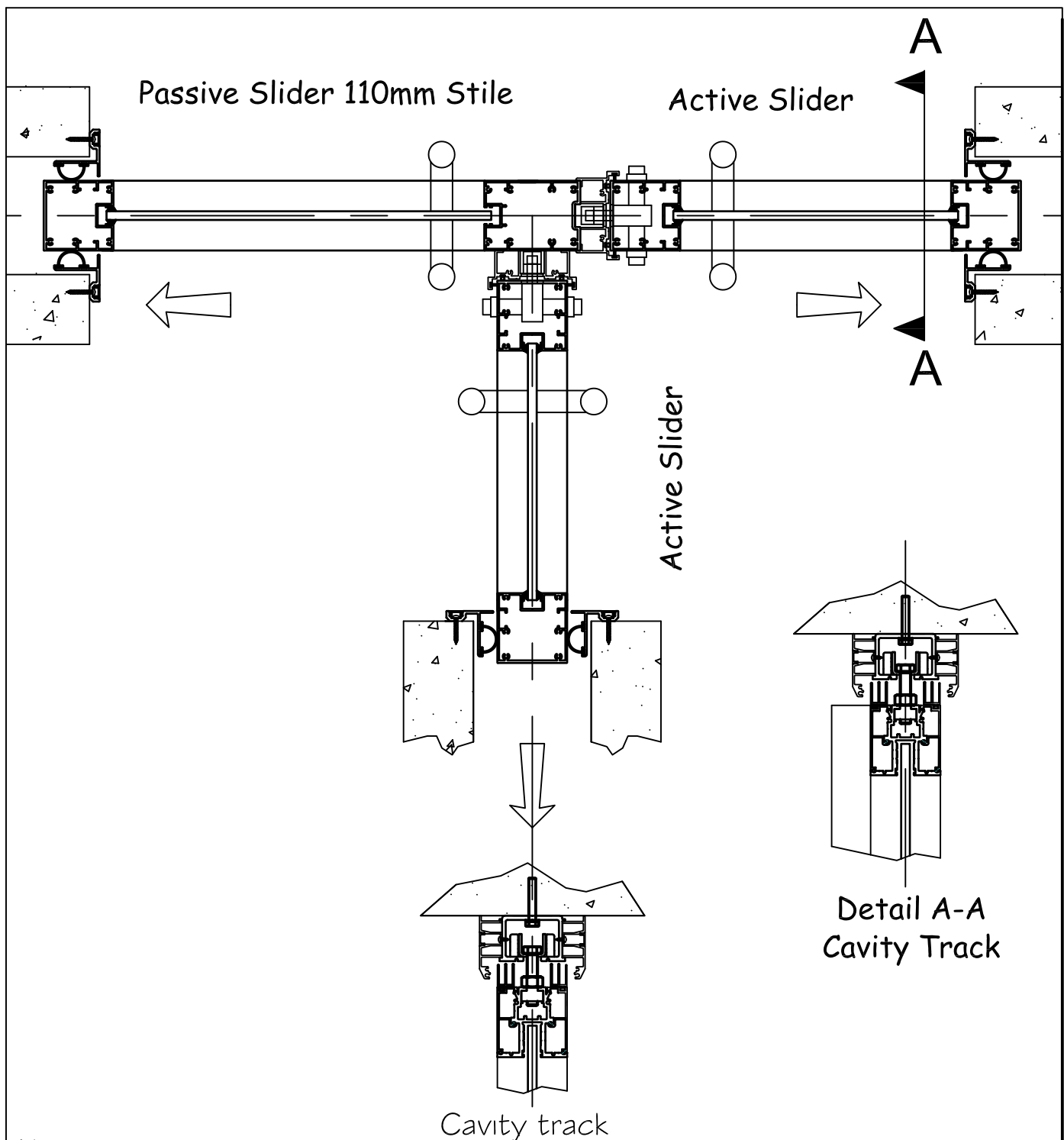
TITLE: 3_WAY_JUNCTION_(OPTION_1A)

REV	REVISION DETAILS	DATE	<small>© COPYRIGHT LOTUS FOLDING WALLS & DOORS PTY LTD. REPRODUCTION PROHIBITED WITHOUT PERMISSION. CHANGES TO THE DESIGN AND/OR DETAILS OF THIS DRAWING MUST NOT BE MADE WITHOUT PERMISSION OF THE D&D MANAGER. DO NOT SCALE FROM THIS DRAWING. CHECK ALL DIMENSIONS WITH THE D&D DEPARTMENT.</small> LOTUS <small>WWW.LOTUSDOORS.COM.AU ABN 61 007 087 523</small>
REV_A	REV_A_REMARKS	RDATEA	
REV_B	REV_B_REMARKS	RDATEB	
REV_C	REV_C_REMARKS	RDATEC	
REV_D	REV_D_REMARKS	RDATED	
PRODUCT: 80_GLASS_SLIDERS			DRAWING NUMBER: GSL-080-0018
			SEQUENCE: 18
			REV 1



TITLE: 3_WAY_JUNCTION_(OPTION_1B)

REV	REVISION DETAILS	DATE	<small>© COPYRIGHT LOTUS FOLDING WALLS & DOORS PTY LTD. REPRODUCTION PROHIBITED WITHOUT PERMISSION. CHANGES TO THE DESIGN AND/OR DETAILS OF THIS DRAWING MUST NOT BE MADE WITHOUT PERMISSION OF THE D&D MANAGER. DO NOT SCALE FROM THIS DRAWING. CHECK ALL DIMENSIONS WITH THE D&D DEPARTMENT.</small> LOTUS <small>WWW.LOTUSDOORS.COM.AU ABN 61 007 087 523</small>
REV_A	REV_A_REMARKS	RDATEA	
REV_B	REV_B_REMARKS	RDATEB	
REV_C	REV_C_REMARKS	RDATEC	
REV_D	REV_D_REMARKS	RDATED	
PRODUCT: 80-GLASS_SLIDERS			DRAWING NUMBER: GSL-080-0019
			SEQUENCE: 19
			REV 1

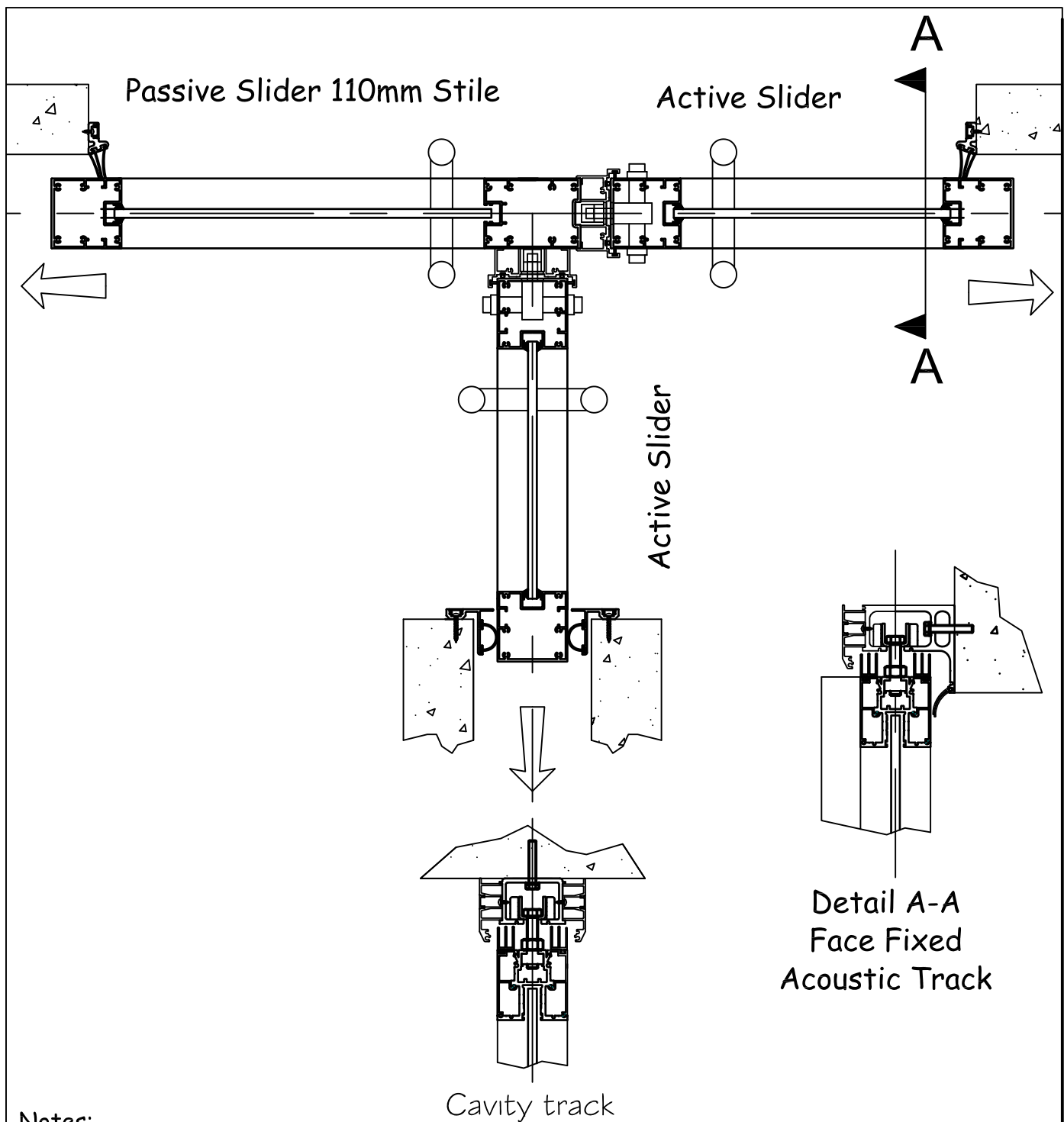


Notes:

- 1) Cavity width is 135mm.
- 2) Clearance from face of slider to wall is 27.5mm
- 3) For Cavity slider track use 72x26 pelmet.
- 4) Passive slider has internal footbolt in bi-parting stile.
- 5) Can only use Type 1 seals on this configuration.

TITLE: 3_WAY_JUNCTION_(OPTION_2A)

REV	REVISION DETAILS	DATE	<small>© COPYRIGHT LOTUS FOLDING WALLS & DOORS PTY LTD. REPRODUCTION PROHIBITED WITHOUT PERMISSION. CHANGES TO THE DESIGN AND/OR DETAILS OF THIS DRAWING MUST NOT BE MADE WITHOUT PERMISSION OF THE D&D MANAGER. DO NOT SCALE FROM THIS DRAWING. CHECK ALL DIMENSIONS WITH THE D&D DEPARTMENT.</small> LOTUS <small>WWW.LOTUSDOORS.COM.AU ABN 61 007 087 523</small>
REV_A	REV_A_REMARKS	RDATEA	
REV_B	REV_B_REMARKS	RDATEB	
REV_C	REV_C_REMARKS	RDATEC	
REV_D	REV_D_REMARKS	RDATED	
PRODUCT: 80-GLASS_SLIDERS			DRAWING NUMBER: GSL-080-0020
			SEQUENCE: 20
			REV 1

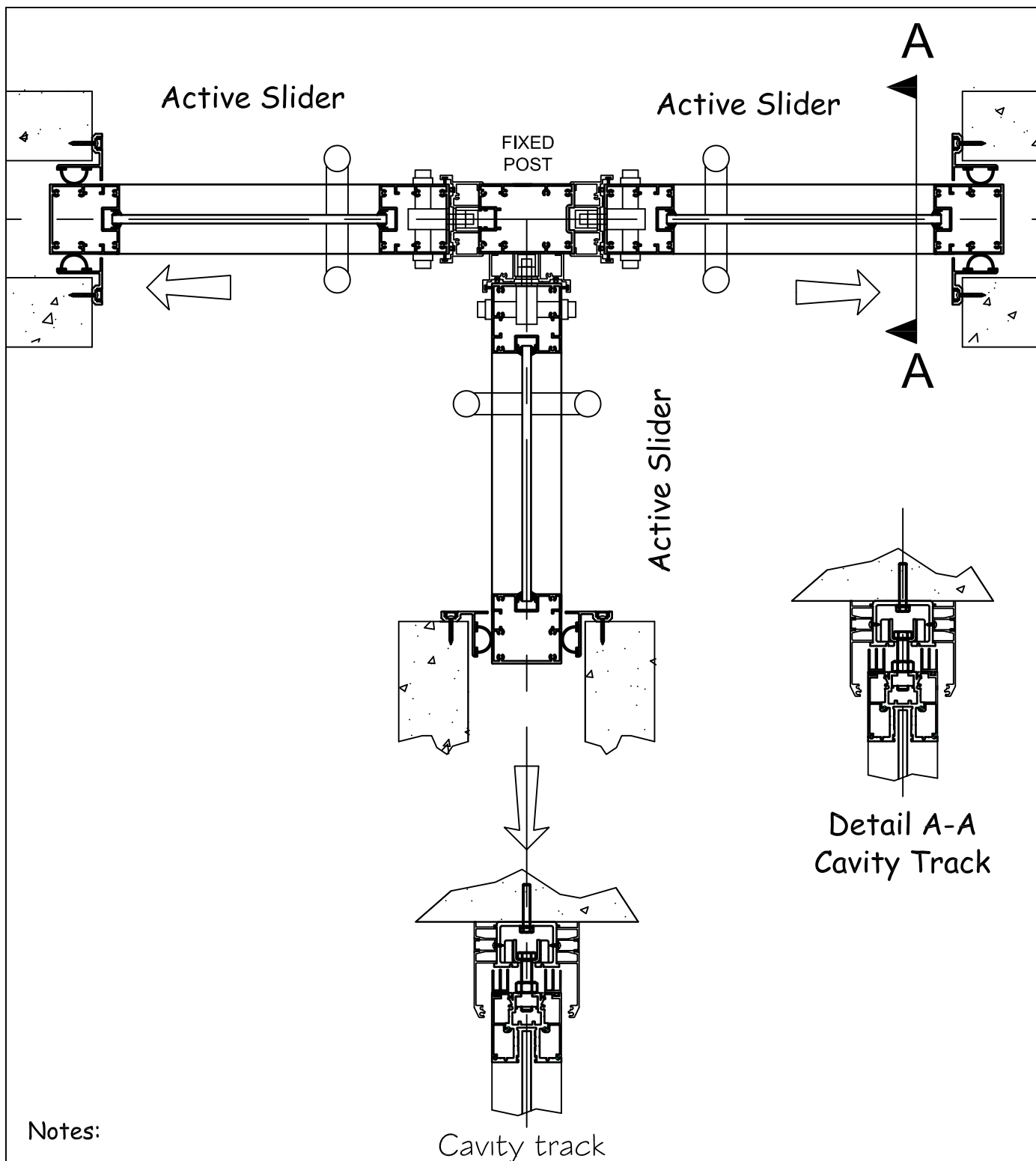


Notes:

- 1) Cavity width is 135mm.
- 2) Face Fixed Slider clearance from face of slider to wall is 27.5mm.
- 3) For Cavity slider track use 72x26 pelmet.
- 4) For Face Fixed track use 72 x 26 pelmet.
- 4) Passive slider has internal footbolt in bi-parting stile.
- 5) Can only use Type 1 seals on this configuration.

TITLE: 3_WAY_JUNCTION_(OPTION_2B)

REV	REVISION DETAILS	DATE	<small>© COPYRIGHT LOTUS FOLDING WALLS & DOORS PTY LTD. REPRODUCTION, PROHIBITED, WITHOUT PERMISSION, CHANGES TO THE DESIGN AND/OR DETAILS OF THIS DRAWING MUST NOT BE MADE WITHOUT PERMISSION OF THE D&D MANAGER. DO NOT SCALE FROM THIS DRAWING. CHECK ALL DIMENSIONS WITH THE D&D DEPARTMENT.</small> LOTUS <small>WWW.LOTUSDOORS.COM.AU ABN 61 007 087 523</small>
REV_A	REV_A_REMARKS	RDATEA	
REV_B	REV_B_REMARKS	RDATEB	
REV_C	REV_C_REMARKS	RDATEC	
REV_D	REV_D_REMARKS	RDATED	
PRODUCT: 80-GLASS_SLIDERS			DRAWING NUMBER: GSL-080-0021
			SEQUENCE: 21
			REV 1

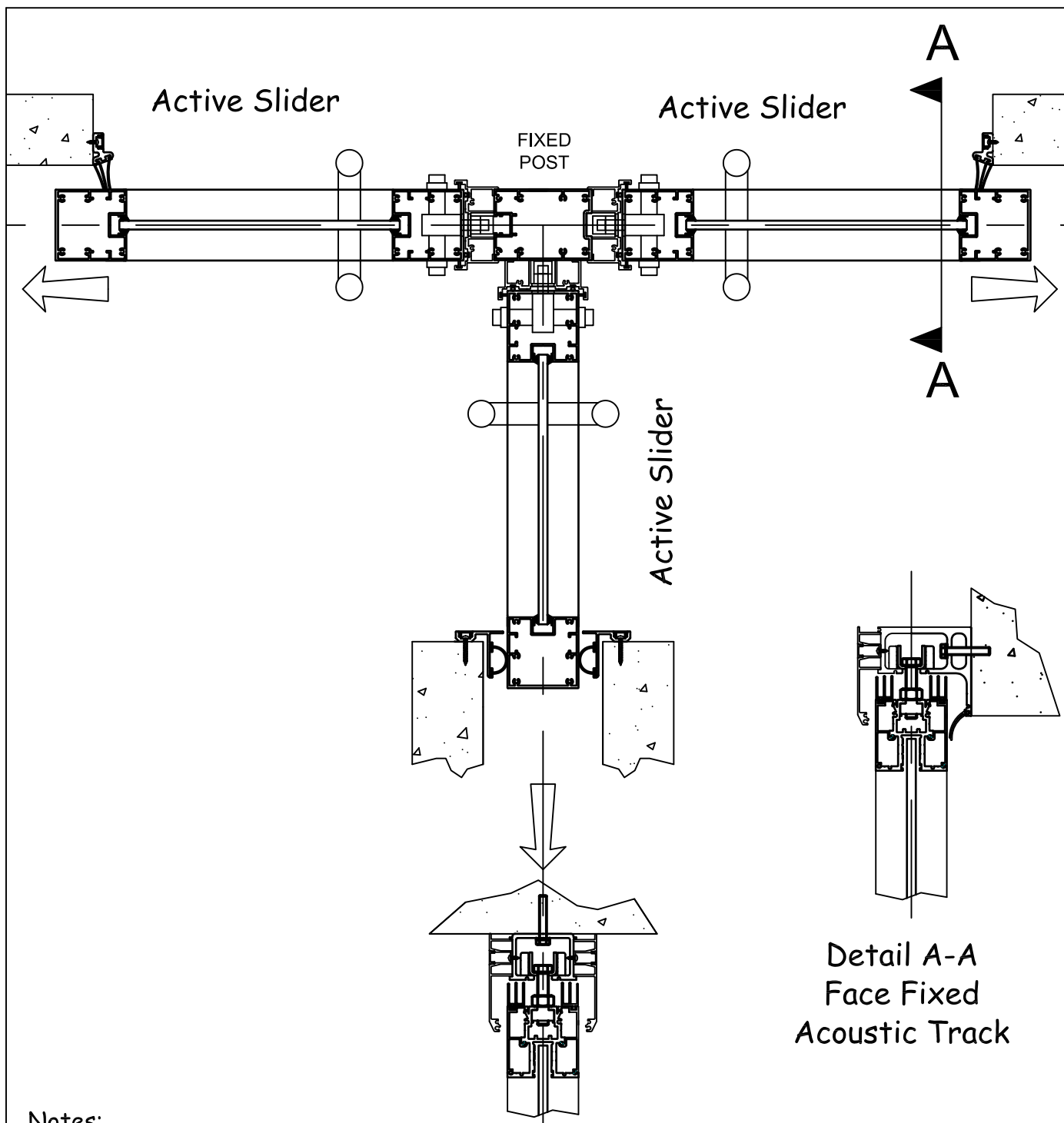


Notes:

- 1) Cavity width is 135mm.
- 2) Clearance from face of slider to wall is 27.5mm.
- 3) Use Cavity slider track with 110x26 pelmet.
- 4) Use 110mm Stile and Bi-Parting Stiles as a fixed post.
- 5) Can use Type 1, 2 & Type 4 seals on this configuration.

TITLE: 3_WAY_JUNCTION_(OPTION_3A)

REV	REVISION DETAILS	DATE	<small>© COPYRIGHT LOTUS FOLDING WALLS & DOORS PTY LTD. REPRODUCTION PROHIBITED WITHOUT PERMISSION. CHANGES TO THE DESIGN AND/OR DETAILS OF THIS DRAWING MUST NOT BE MADE WITHOUT PERMISSION OF THE D&D MANAGER. DO NOT SCALE FROM THIS DRAWING. CHECK ALL DIMENSIONS WITH THE D&D DEPARTMENT.</small> LOTUS <small>WWW.LOTUSDOORS.COM.AU ABN 61 007 087 523</small>
REV_A	REV_A_REMARKS	RDATEA	
REV_B	REV_B_REMARKS	RDATEB	
REV_C	REV_C_REMARKS	RDATEC	
REV_D	REV_D_REMARKS	RDATED	
PRODUCT: GLASS_SLIDERS			DRAWING NUMBER: GSL-080-0022
			SEQUENCE: 22
			REV 1

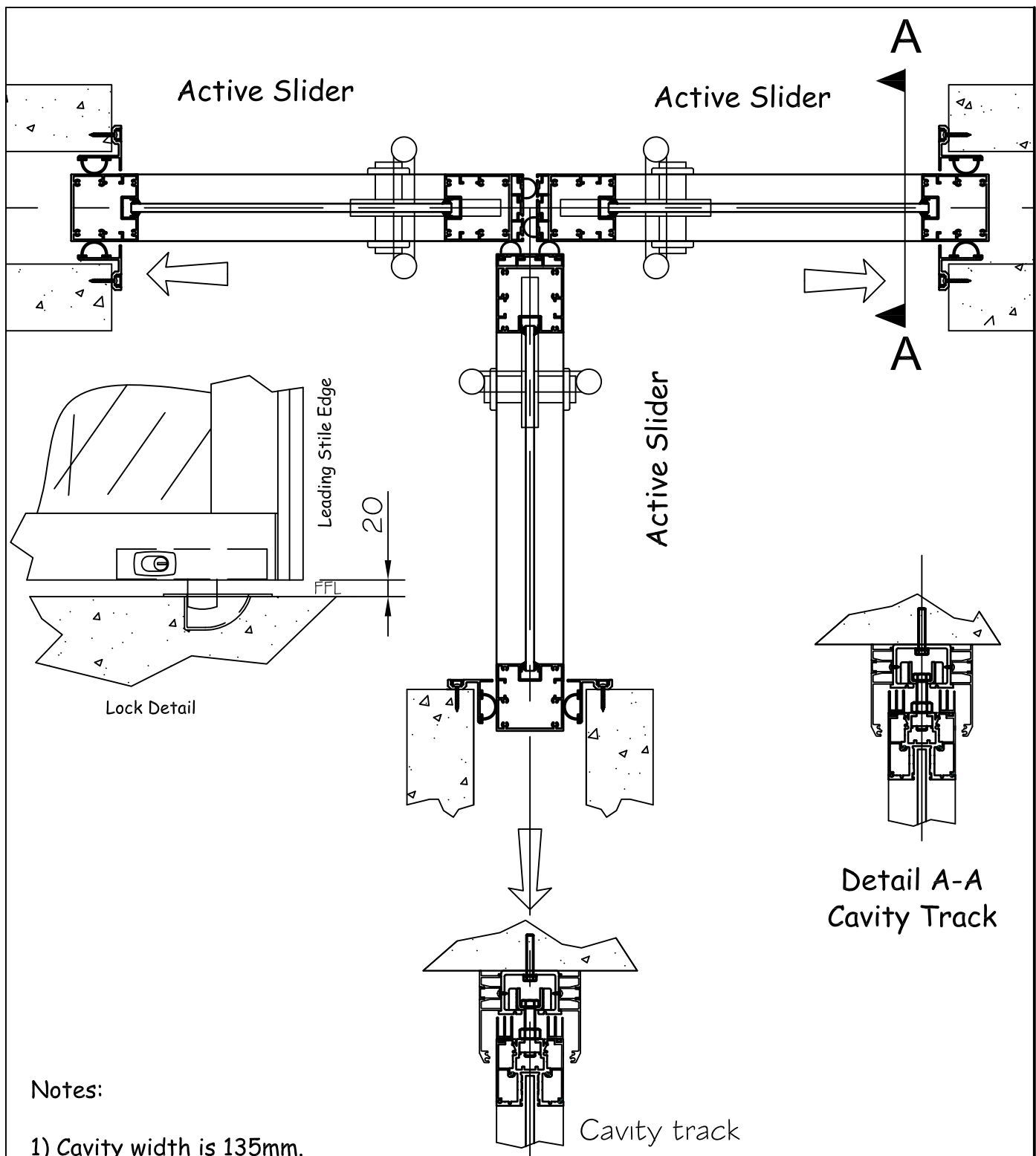


Notes:

- 1) Cavity width is 135mm.
- 2) Clearance from face of slider to wall is 27.5mm.
- 3) Use Cavity slider track with 110x26 pelmet.
- 4) Use Face Fixed Acoustic track with 110 x 26 pelmet.
- 5) Use 110mm Stile and Bi-Parting Stiles as a fixed post.
- 6) Can use Type 1, 2 & Type 4 seals on this configuration.

TITLE: 3_WAY_JUNCTION_(OPTION_3B)

REV	REVISION DETAILS	DATE	<small>© COPYRIGHT LOTUS FOLDING WALLS & DOORS PTY LTD. REPRODUCTION PROHIBITED WITHOUT PERMISSION. CHANGES TO THE DESIGN AND/OR DETAILS OF THIS DRAWING MUST NOT BE MADE WITHOUT PERMISSION OF THE D&D MANAGER. DO NOT SCALE FROM THIS DRAWING. CHECK ALL DIMENSIONS WITH THE D&D DEPARTMENT.</small> LOTUS <small>WWW.LOTUSDOORS.COM.AU ABN 61 007 087 523</small>
REV_A	REV_A_REMARKS	RDATEA	
REV_B	REV_B_REMARKS	RDATEB	
REV_C	REV_C_REMARKS	RDATEC	
REV_D	REV_D_REMARKS	RDATED	
PRODUCT: 80-GLASS_SLIDERS			DRAWING NUMBER: GSL-080-0023
			SEQUENCE: 23
			REV 1

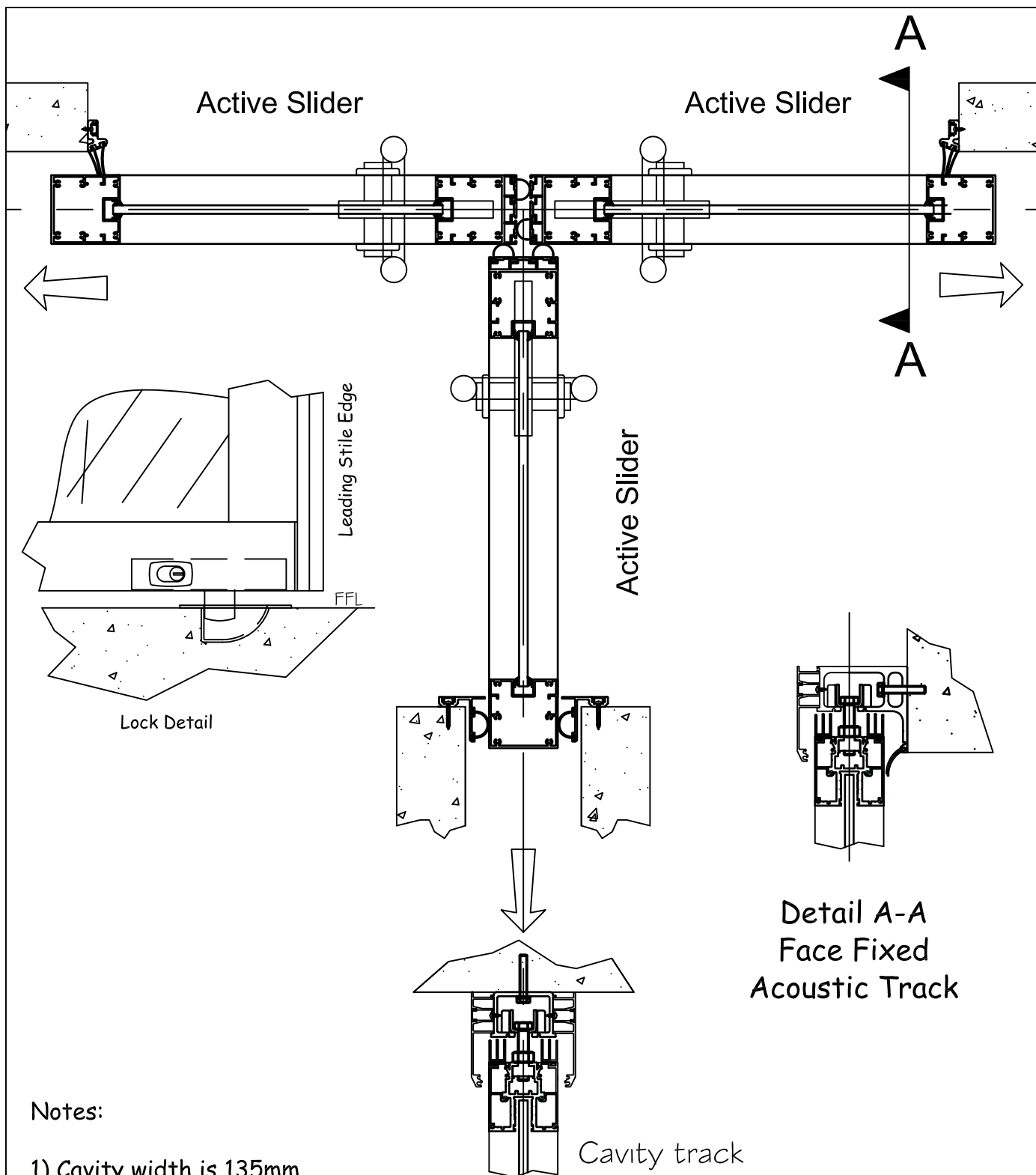


Notes:

- 1) Cavity width is 135mm.
- 2) Clearance from face of slider to wall is 27.5mm.
- 3) Use Cavity slider track with 110x26 pelmet.
- 4) Locks are fitted to the bottom rails and lock into scoop type keeper - see Lock detail.
- 5) To ensure Scoop Lock engagement then underside of rail to FFL to be 20mm.
- 6) Can only use Type 1 seals on this configuration.

TITLE: 3_WAY_JUNCTION_(BALLOON_BUMPERS_OPTION_A)

REV	REVISION DETAILS	DATE	<small>© COPYRIGHT LOTUS FOLDING WALLS & DOORS PTY LTD. REPRODUCTION PROHIBITED WITHOUT PERMISSION. CHANGES TO THE DESIGN AND/OR DETAILS OF THIS DRAWING MUST NOT BE MADE WITHOUT PERMISSION OF THE D&D MANAGER. DO NOT SCALE FROM THIS DRAWING. CHECK ALL DIMENSIONS WITH THE D&D DEPARTMENT.</small> LOTUS <small>WWW.LOTUSDOORS.COM.AU ABN 61 007 087 523</small>
REV_A	REV_A_REMARKS	RDATEA	
REV_B	REV_B_REMARKS	RDATEB	
REV_C	REV_C_REMARKS	RDATEC	
REV_D	REV_D_REMARKS	RDATED	
PRODUCT: 80-GLASS_SLIDERS			DRAWING NUMBER: GSL-080-0024
			SEQUENCE: 24
			REV 1



Notes:

- 1) Cavity width is 135mm.
- 2) Clearance from face of slider to wall is 27.5mm.
- 3) Use Cavity slider track with 110x26 pelmet.
- 4) Locks are fitted to the bottom rails and lock into scoop type keeper - see Lock detail.
- 5) To ensure Scoop Lock engagement then underside of rail to FFL to be 20mm.
- 6) Can only use Type 1 seals on this configuration.

TITLE:

3_WAY_JUNCTION_(BALLOON_BUMPERS_OPTION_B)

REV	REVISION DETAILS	DATE	<small>© COPYRIGHT LOTUS FOLDING WALLS & DOORS PTY LTD. REPRODUCTION PROHIBITED WITHOUT PERMISSION. CHANGES TO THE DESIGN AND/OR DETAILS OF THIS DRAWING MUST NOT BE MADE WITHOUT PERMISSION OF THE D&D MANAGER. DO NOT SCALE FROM THIS DRAWING. CHECK ALL DIMENSIONS WITH THE D&D DEPARTMENT.</small> LOTUS <small>WWW.LOTUSDOORS.COM.AU ABN 61 007 087 523</small>
REV_A	REV_A_REMARKS	RDATEA	
REV_B	REV_B_REMARKS	RDATEB	
REV_C	REV_C_REMARKS	RDATEC	
REV_D	REV_D_REMARKS	RDATED	
PRODUCT: 80-GLASS_SLIDERS			DRAWING NUMBER: GSL-080-0025
			SEQUENCE: 25
			REV 1